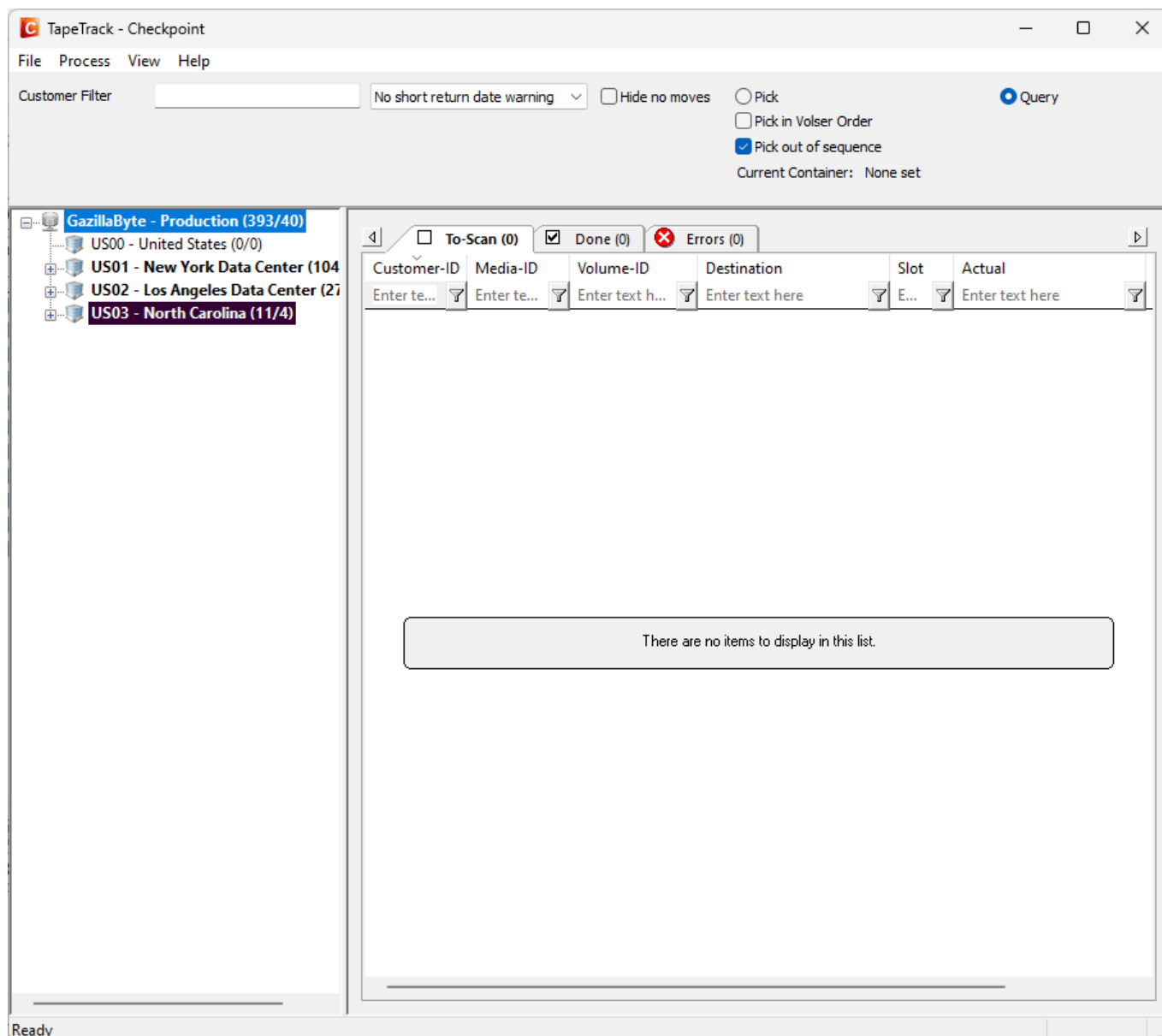


Movement Tree


The Movement Tree provides a list of all available **Volume** movements, organized in the hierarchy of Server, **Customer**, **Media Type**, Receiving **Repository**, and Sending **Repository**.

Any **Customers** with **Volumes** moving to a **Repository** with the Do not slot option set to True will display with a purple background (eg. US03).

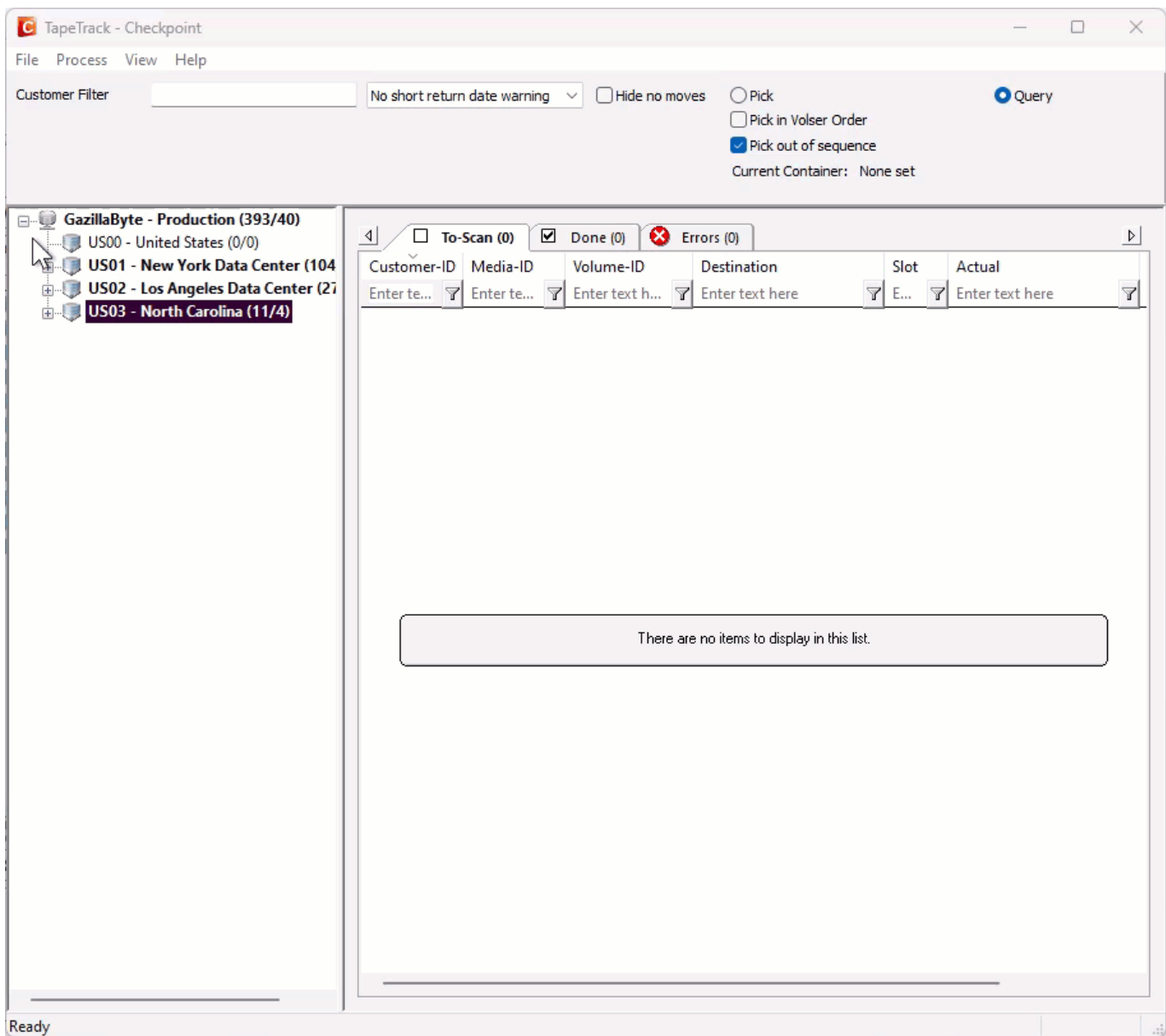


Build/Update Movement Tree

When you first **login** to Checkpoint all current movement data will be automatically loaded into the Movement Tree. As new movements can be added to TapeTrack at any time it is advisable to refresh or reload the data in the Movement Tree periodically to ensure displayed **Volumes** are up to date.

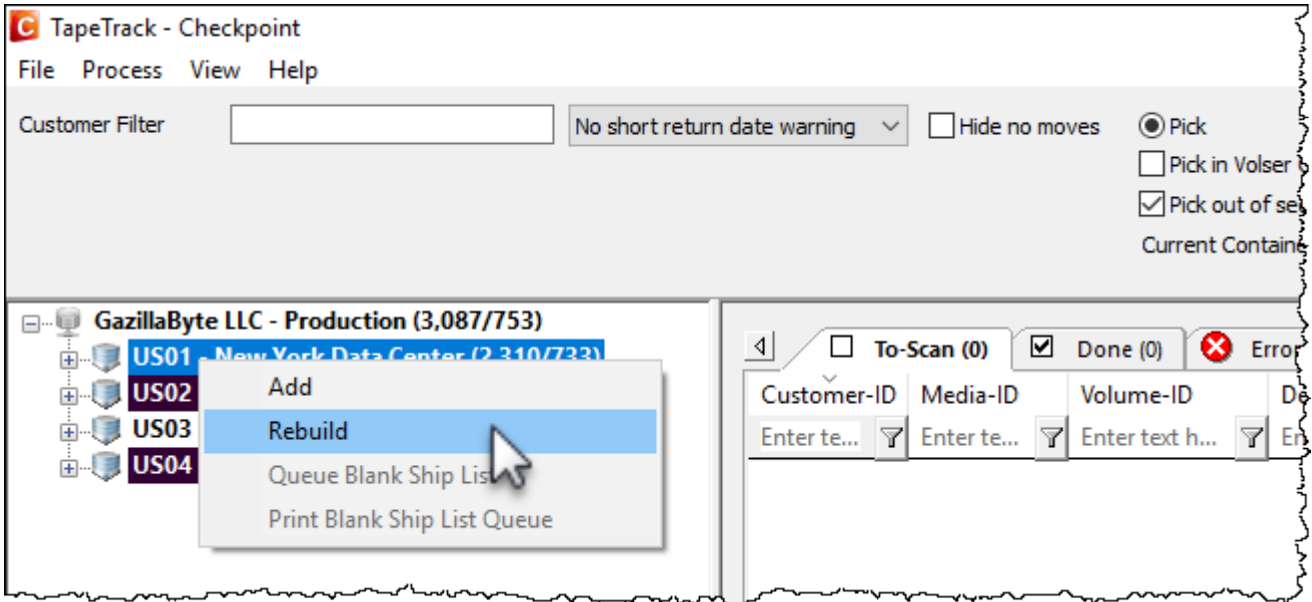
 Updating the Movement Tree will clear any **Volumes** in the **To Scan** window

To refresh the Movement Tree select, from the Main Menu, Process → Build/Update Movement Tree.



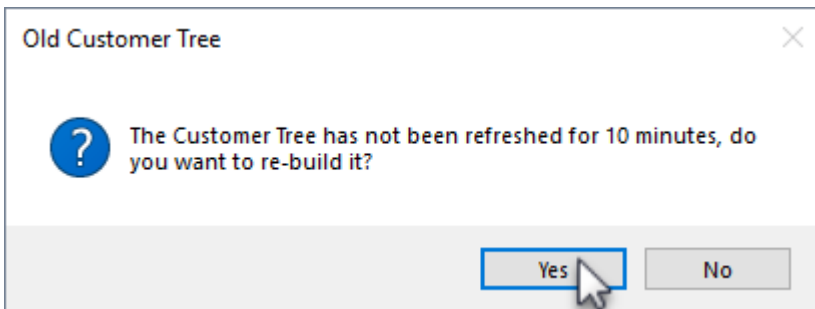
Refreshing the Movement Tree can also be achieved by:


Right clicking any **Customer** and selecting **Rebuild**.



Pressing F5 while Movement Tree in focus.

After you exceed the time threshold Checkpoint will automatically prompt you to refresh the Movement Tree when adding Volumes to the **To Scan** window.



 Updating the Movement Tree will clear any Volumes in the **To Scan** window

From:
<https://rtfm.tapetrack.com/> - **TapeTrack Documentation**

Permanent link:
<https://rtfm.tapetrack.com/checkpoint/build?rev=1672701044>

Last update: **2025/01/21 22:07**

