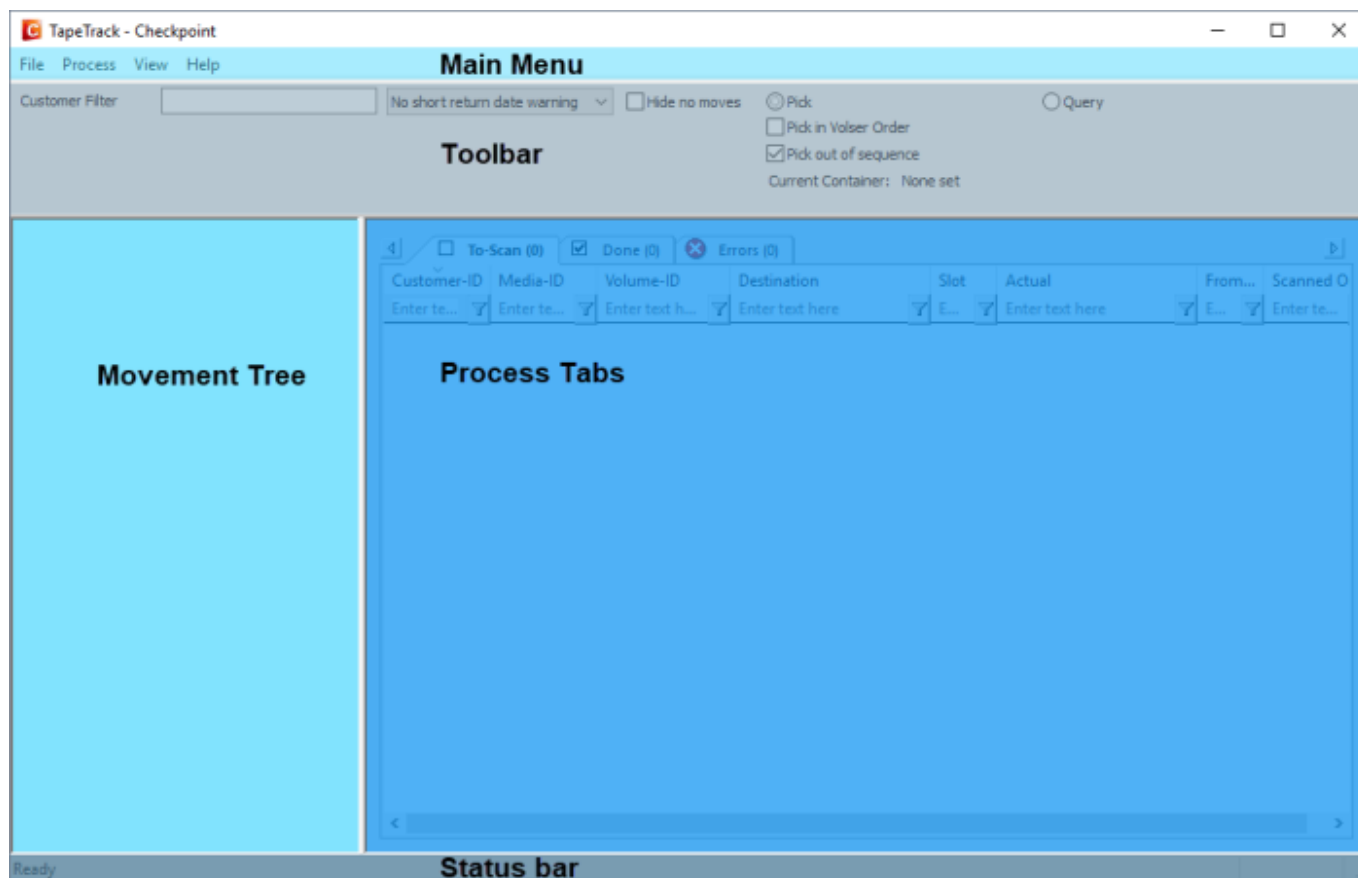


Checkpoint GUI

The Checkpoint GUI is divided into 5 main zones, main menu, toolbar, movement tree, process tabs and status bar.



From: <https://rtfm.tapetrack.com/> - **TapeTrack Documentation**

Permanent link: <https://rtfm.tapetrack.com/checkpoint/gui?rev=1522018060>

Last update: **2025/01/21 22:07**

