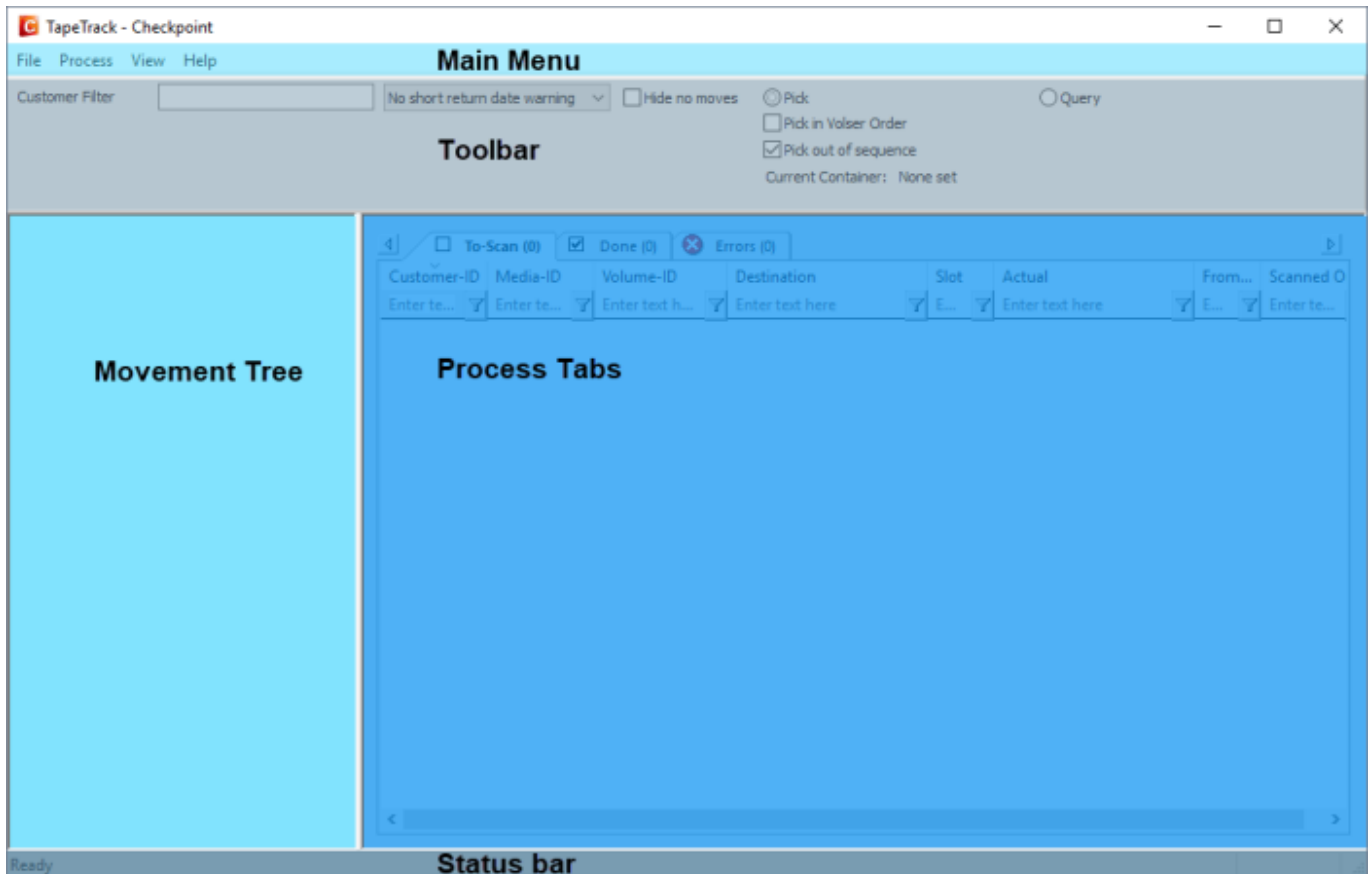


# Checkpoint GUI

The Checkpoint GUI is divided into 5 main zones, main menu, toolbar, movement tree, process tabs and status bar.



## Main Menu

The [Main Menu](#) provides access to essential functions in Checkpoint including [server information](#), volume movement processes, [receipts](#) and [software preferences](#).

## Toolbar

The toolbar allows Customer filter input, Pick or Query settings and various other scan process settings.

## Movement Tree

The Movement tree displays Customer and media information, provides a portal to refresh movement data and load the required volumes into the process tabs.

## Process Tabs

The process tabs display volumes at various stages of the scanning process.

The information in these tabs are divided into:

- To Do (to be scanned)
- Done (Scanned)
- Errors (Incorrectly scanned)

## Status Bar

The status bar displays information about the scan process.

When CheckPoint is ready to perform a Scan, the Status Bar will display "Ready".

During a Scan, the status bar will display text being read by the Speech Subsystem.

From:

<https://rtfm.tapetrack.com/> - **TapeTrack Documentation**

Permanent link:

<https://rtfm.tapetrack.com/checkpoint/gui?rev=1522020453>

Last update: **2025/01/21 22:07**

