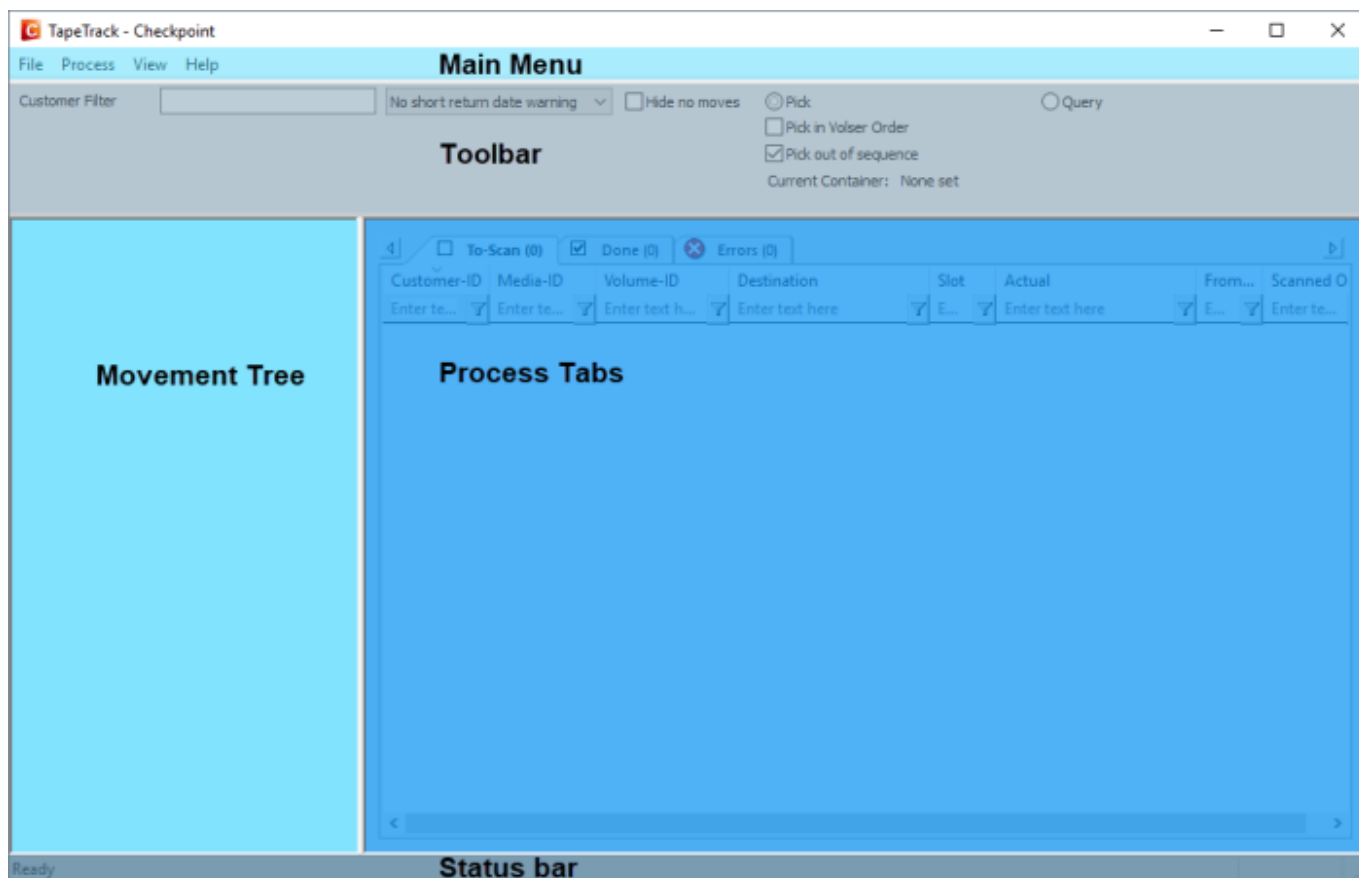


Checkpoint GUI

The Checkpoint GUI is divided into 5 main zones, Main Menu, Toolbar, Movement Tree, Process tabs and Status Bar.



Main Menu

The [Main Menu](#) provides access to essential functions in Checkpoint including [server information](#), volume movement processes, [receipts](#) and [software preferences](#).

Toolbar

The [toolbar](#) allows Customer filter input, Pick or Query settings and various other scan process settings.

Movement Tree

The Movement tree displays Customer and media information, provides a portal to refresh movement data and load the required volumes into the process tabs.

Process Tabs

The process tabs display volumes at various stages of the scanning process.

The information in these tabs are divided into:

- To Do (to be scanned)
- Done (Scanned)
- Errors (Incorrectly scanned)

Status Bar

The status bar displays information about the scan process.

When CheckPoint is ready to perform a Scan, the Status Bar will display “Ready”.

During a Scan, the status bar will display text being read by the Speech Subsystem.

From:

<https://rtfm.tapetrack.com/> - **TapeTrack Documentation**

Permanent link:

<https://rtfm.tapetrack.com/checkpoint/gui?rev=1545005167>

Last update: **2025/01/21 22:07**

