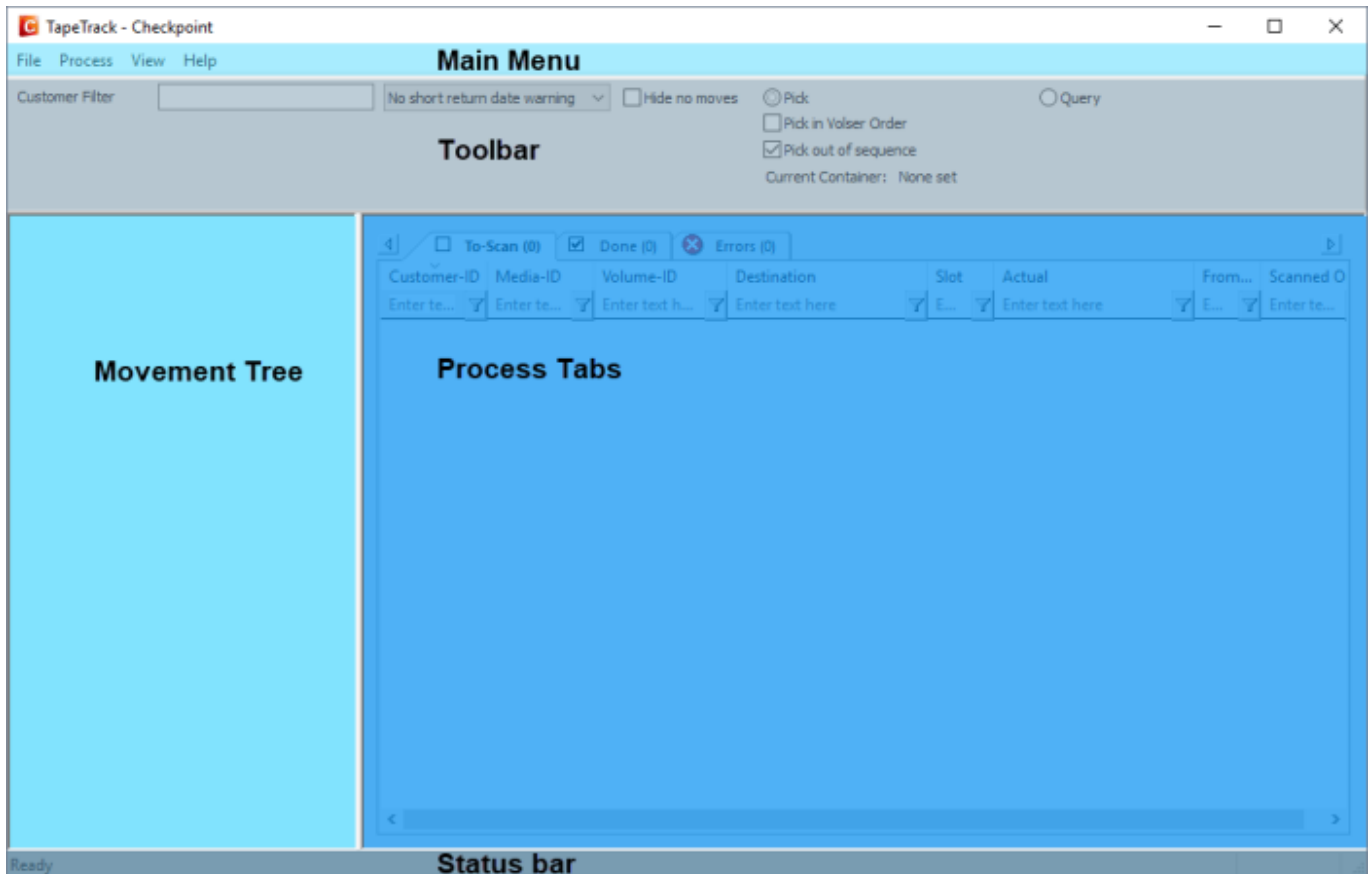


# Checkpoint GUI

The Checkpoint GUI is divided into 5 main zones, [Main Menu](#), [Toolbar](#), [Movement Tree](#), [Process Tabs](#) and [Status Bar](#).



## Main Menu

The [Main Menu](#) provides access to essential functions in Checkpoint including:

- [server information](#).
- [Volume](#) movement processes.
- [Receipts](#) and [Software Preferences](#).

## Toolbar

The [Toolbar](#) allows [Customer](#) filter input, [Pick](#) or [Query](#) settings and various other Scan Process settings.

## Movement Tree

The Movement Tree displays [Customer](#) and [Media](#) information, provides a portal to refresh movement data and load the required [Volumes](#) into the Process Tabs.

## Process Tabs

The Process tabs display [Volumes](#) at various stages of the Scanning process.

The information in these tabs are divided into:

- To Do (to be scanned)
- Done (Scanned)
- Errors (Incorrectly Scanned)

## Status Bar

The Status Bar displays information about the Scan Process.

When CheckPoint is ready to perform a Scan, the Status Bar will display “Ready”.

During a Scan, the status bar will display text being read by the Speech Subsystem.

From:

<https://rtfm.tapetrack.com/> - **TapeTrack Documentation**

Permanent link:

<https://rtfm.tapetrack.com/checkpoint/gui?rev=1545006482>

Last update: **2025/01/21 22:07**

