

Desktop Logon



All user and server details shown are examples only. You will need to insert your own values in order to make a successful connection to your server.

To Logon from your desktop, select your server from the drop-down menu.

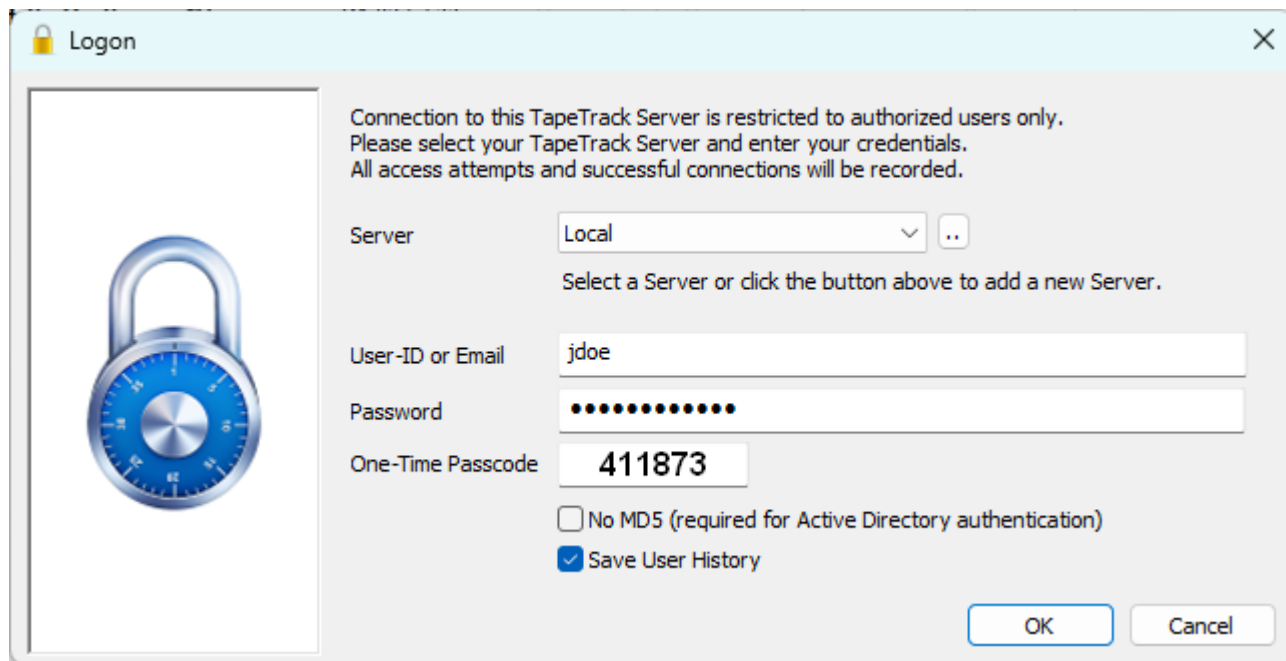
Enter your [User-ID](#) and [Password](#).

Check No MD5 if using Active Domain Integration.

If you have been assigned [One Time Password](#) and have not yet activated it, follow the instructions at

If you have been assigned [One Time Password](#) and have activated it, enter the code from your authenticator app.

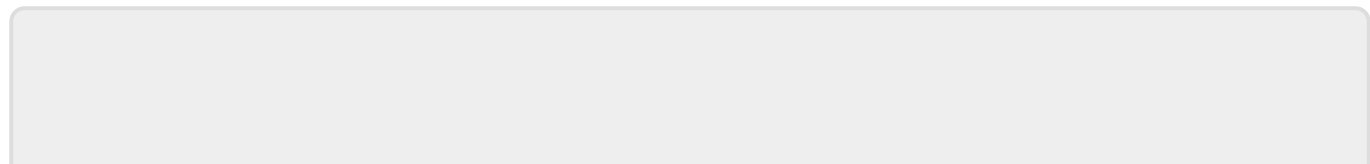
Click OK to login.



Login Errors

For troubleshooting login errors see [Troubleshooter Login](#)

2018/06/20 14:41 · Gerard Nicol



From:

<https://rtfm.tapetrack.com/> - **TapeTrack Documentation**

Permanent link:

<https://rtfm.tapetrack.com/checkpoint/login>

Last update: **2025/01/21 22:07**

