

Logon

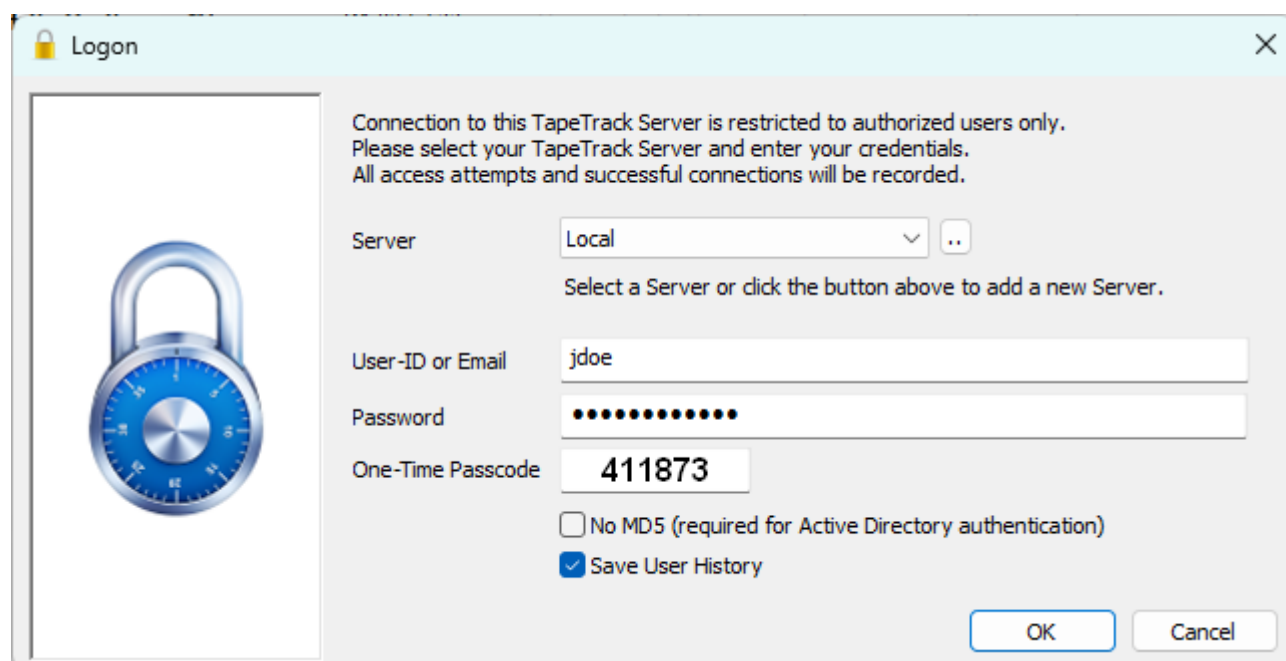
When you execute TapeTrack Checkpoint you will be presented with a splash screen for a short time and then the login window. If Checkpoint is already open, to open the login window select, from the main menu, File → Login.

Select your server from the dropdown menu.

Enter your user ID and password.

Check **No MD5** if using Active Domain Integration.

Click OK to login.



The screenshot shows the 'Logon' dialog box with a light blue title bar and a close button (X) in the top right corner. On the left is a large image of a blue padlock. To the right of the padlock, the text reads: 'Connection to this TapeTrack Server is restricted to authorized users only. Please select your TapeTrack Server and enter your credentials. All access attempts and successful connections will be recorded.'

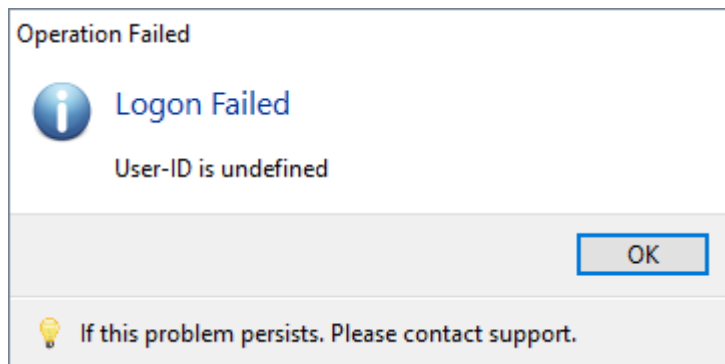
The form contains the following fields and controls:

- Server:** A dropdown menu showing 'Local' with a small '...' button to its right. Below it, the text 'Select a Server or click the button above to add a new Server.'
- User-ID or Email:** A text input field containing 'jdoe'.
- Password:** A text input field filled with 12 black dots.
- One-Time Passcode:** A text input field containing '411873'.
- Checkboxes:** Two checkboxes are located below the passcode field: 'No MD5 (required for Active Directory authentication)' which is unchecked, and 'Save User History' which is checked.
- Buttons:** 'OK' and 'Cancel' buttons are located at the bottom right of the dialog.

Login Errors

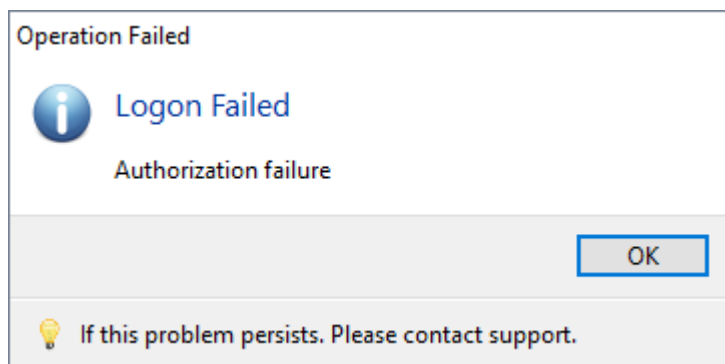
Incorrect User Name

If you enter an incorrect username you will see a popup saying **User Undefined**. Check to make sure your user name is correct before logging in.



Incorrect Password

If you enter an incorrect password you will see a popup saying **Logon Failed**. Ensure your password is typed in correctly.



After 4 incorrect logins, user access will be revoked as a security measure. To reactivate access your administrator will need to reset your password.

From:
<https://rtfm.tapetrack.com/> - **TapeTrack Documentation**

Permanent link:
<https://rtfm.tapetrack.com/checkpoint/logon?rev=1508974291>

Last update: **2025/01/21 22:07**

