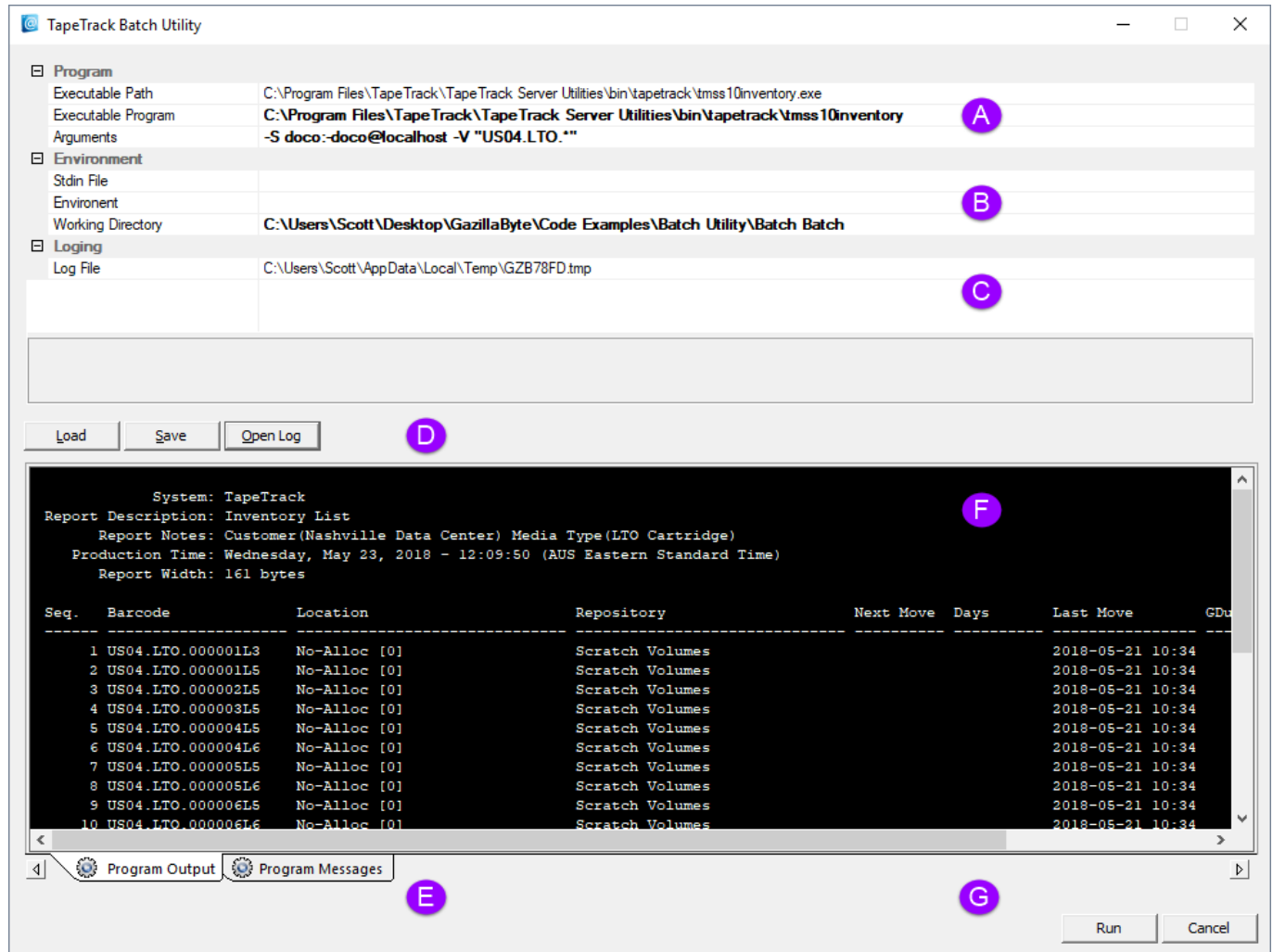


TMSSBatch

TMSSBatch will open the TapeTrack Batch Utility, allowing simplified input of information to create a batch file for execution of a command line utility executable, including input of arguments, input files and specification of the working directory.



Technical Support

The TapeTrack Software is commercially supported by a full time help desk staff. If you are experiencing problems or want some advice on how to configure or use the product please see the [Accessing Technical Support](#) page.

Exit Statuses

1. **zero** Program has ended successfully.
2. **non-zero** Program has not ended successfully.

From:

<https://rtfm.tapetrack.com/> - **TapeTrack Documentation**

Permanent link:

<https://rtfm.tapetrack.com/cli/tmss10batch/tmssbatch?rev=1527042328>

Last update: **2025/01/21 22:07**

