

# TMSS10BatchLoader

## Synopsis

```
TMSS10BatchLeader [-c configuration file] [-S logonstring]
```

## Description

Creates Customer, Media and Repositories by loading a configuration file into the TapeTrack Database.

## Options

- -c The config file argument specifies the path to the Batch Configuration File.
- -S Logon string argument sets the [Server logon information](#).

## Technical Support

The TapeTrack Software is commercially supported by a full time help desk staff. If you are experiencing problems or want some advice on how to configure or use the product please see the [Accessing Technical Support](#) page.

## Exit Statuses

1. **zero** Program has ended successfully.
2. **non-zero** Program has not ended successfully.

## Environment

## Files

## Example

### Configuration File

Configuration file to load to create two Customers with attributes

Customer 0001

- Customer ID: US01, Customer Description: New York Data Center
- Media ID: LTO, Media Description: LTO Cartridge
- Repository ID: LIBR, Repository Description: Library, Repository Type: 1, Next Repository: OFFS
- Repository ID: OFFS, Repository Description: Iron Mountain, Repository Type: 2
- Repository ID: DEST, Repository Description: Destroyed, Repository Type: 6
- Repository ID: HOLD, Repository Description: Legal Hold, Repository Type: 4

### Customer 0002

- Customer ID: US02, Customer Description: Los Angeles Data Center
- Media ID: 3490, Media Description: IBM 3490 Cartridge.
- Repository ID: LIBR, Repository Description: Library, Repository Type: 1, Next Repository: OFFS
- Repository ID: OFFS, Repository Description: Iron Mountain, Repository Type: 2 and Next Repository: LIBR.

```
setup=
{
  customers=
  (
    {
      id="US01"; description="New York Data Center";

      media=
      (
        {
          id="LTO"; description="LTO Cartridge";

          repositories=
          (
            { id="LIBR"; description="Library"; type=3;
next="OFFS"; },
            { id="OFFS"; description="Iron Mountain"; type=2;
next="LIBR"; },
            { id="DEST"; description="Destroyed"; type=6; },
            { id="HOLD"; description="Legal hold"; type=4; }
          )
        },
        {
          id="3490"; description="IBM 3490 Cartridge";

          repositories=
          (
            { id="LIBR"; description="Library"; type=3;
next="OFFS"; },
            { id="OFFS"; description="Iron Mountain"; type=2;
next="LIBR"; }
          )
        }
      )
    },
  ),
}
```

```
{
  id="US02"; description="Los Angeles Data Center";
  media=
  (
    {
      id="LT0"; description="LT0 Cartridge";

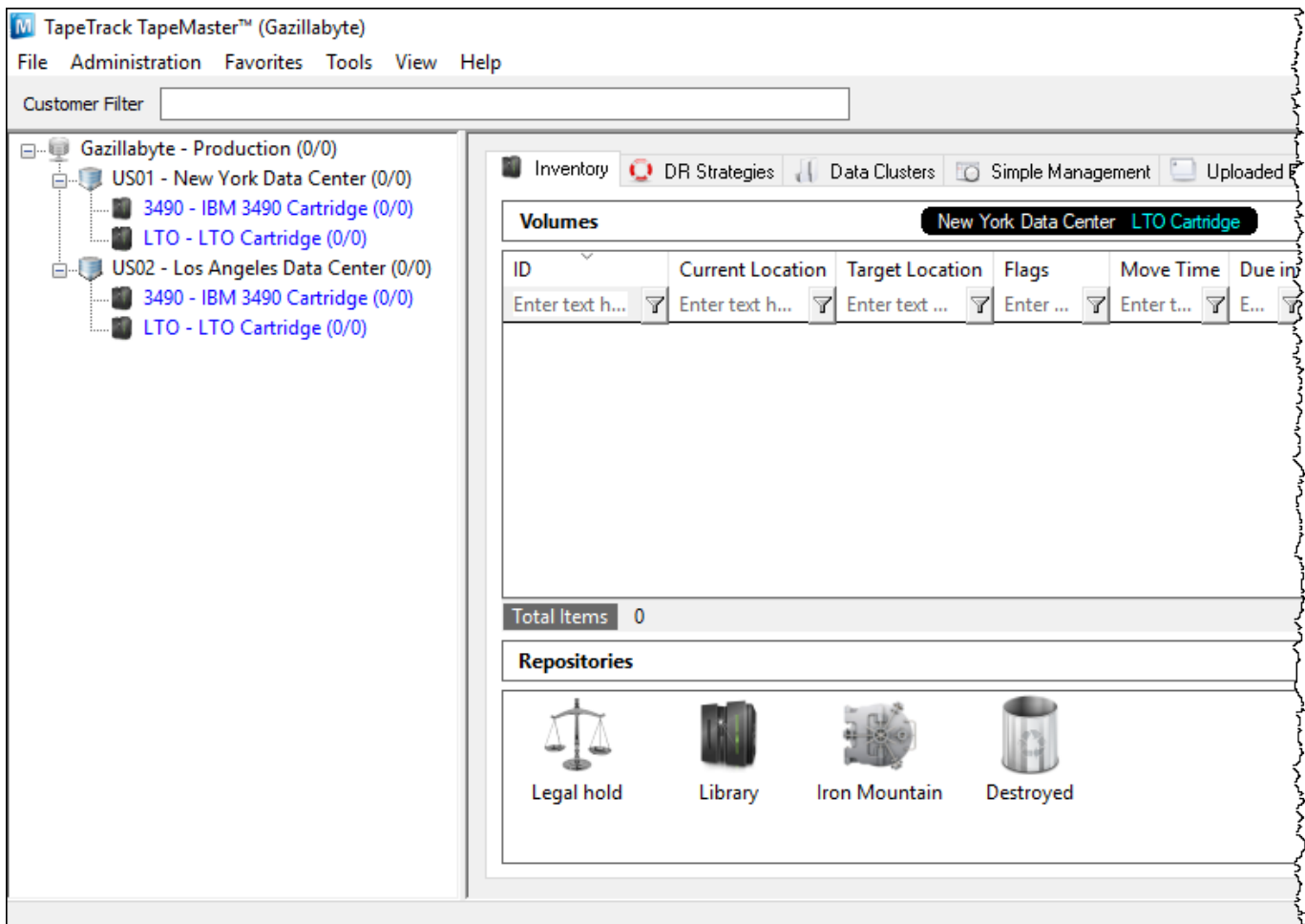
      repositories=
      (
        { id="LIBR"; description="Library"; type=3; },
        { id="OFFS"; description="Iron Mountain"; type=2; }
      )
    },
    {
      id="3490"; description="IBM 3490 Cartridge";

      repositories=
      (
        { id="LIBR"; description="Library"; type=3; },
        { id="OFFS"; description="Iron Mountain"; type=2; }
      )
    }
  )
};
```

## Command line syntax

```
TMSS10BatchLoader -S user:-password@localhost -c master.cfg
```

## Output Results



### Configuration File

When creating multiple Customers with identical Media Types and/or Repositories it is possible to create a configuration file with these attributes and include it in the master configuration file to save duplication of code blocks.

#### include.cfg

```
media=
(
  {
    id="LT0"; description="LTO Cartridge";

    repositories=
    (
      { id="LIBR"; description="Library"; type=3; },
      { id="OFFS"; description="Iron Mountain"; type=2; }
    )
  },
),
```

```
        {
            id="3490"; description="IBM 3490 Cartridge";

            repositories=
            (
                { id="LIBR"; description="Library"; type=3;
next="OFFS"; },
                { id="OFFS"; description="Iron Mountain"; type=2;
next="LIBR"; }
            )
        }
    )
```

### master.cfg

```
setup=
{
    customers=
    (
        {
            id="US01"; description="New York Data Center";
            @include "include.cfg"
        },
        {
            id="US02"; description="Los Angeles Data Center";
            @include "include.cfg"
        }
    );
};
```

From:  
<https://rtfm.tapetrack.com/> - **TapeTrack Documentation**

Permanent link:  
<https://rtfm.tapetrack.com/cli/tmss10batchloader?rev=1551058559>

Last update: **2025/01/21 22:07**

