

TMSS10BatchLoader

Synopsis

TMSS10BatchLoader [-c configuration file] [-S logonstring]

Description

TMSS10BatchLoader creates [Customer](#), [Media](#) and [Repositories](#) by loading a configuration file into the TapeTrack Database.

Options

- -c The config file argument specifies the path to the Batch Configuration File.
- -S Logon string argument sets the [Server logon information](#).

Editable Fields

- [Customer-ID](#)
- [Customer Description](#)
- [Media-ID](#)
- [Media Description](#)
- [Repository-ID](#)
- [Repository Description](#)
- Repository Icon
 -  Rack (value = 0)
 -  Transport (value = 1)
 -  Vault (value = 2)
 -  Library (value = 3)
 -  Legal Hold (value = 4)
 -  Disaster Recovery (value = 5)
 -  Destruction (value = 6)
 -  Ordered (value = 7)
 -  Scratch (value = 8)
- [Next Repository](#)
- [Auto Container flag](#)

Technical Support

The TapeTrack Software is commercially supported by a full time help desk staff. If you are experiencing problems or want some advice on how to configure or use the product please see the [Accessing Technical Support](#) page.

Exit Statuses

1. **zero** Program has ended successfully.
2. **non-zero** Program has not ended successfully.

Environment

Files

stderr: Diagnostic messages.

Example

Configuration File

Configuration file to create two Customers with Attributes:

Customer 0001

- [Customer-ID](#): US01, [Customer Description](#): New York Data Center.
- [Media-ID](#): LTO, [Media Description](#): LTO Cartridge.
- [Repository-ID](#): LIBR, [Repository Description](#): Library, [Repository Type](#): 1, [Next Repository](#): OFFS.
- [Repository-ID](#): OFFS, [Repository Description](#): Iron Mountain, [Repository Type](#): 2.
- [Repository-ID](#): DEST, [Repository Description](#): Destroyed, [Repository Type](#): 6.
- [Repository-ID](#): HOLD, [Repository Description](#): Legal Hold, [Repository Type](#): 4 .

Customer 0002

- [Customer-ID](#): US02, [Customer Description](#): Los Angeles Data Center.
- [Media-ID](#): 3490, [Media Description](#): IBM 3490 Cartridge.
- [Repository-ID](#): LIBR, [Repository Description](#): Library, [Repository Type](#): 1, [Next Repository](#): OFFS.
- [Repository-ID](#): OFFS, [Repository Description](#): Iron Mountain, [Repository Type](#): 2 and [Next Repository](#): LIBR.

[Download Sample Configuration file.](#)

```
setup=
{
  customers=
  (
    {
      id="US01"; description="New York Data Center";

      media=
      (
```

```

    {
      id="LT0"; description="LT0 Cartridge";

      repositories=
      (
        { id="LIBR"; description="Library"; type=3;
next="OFFS"; },
        { id="OFFS"; description="Iron Mountain"; type=2;
next="LIBR"; },
        { id="DEST"; description="Destroyed"; type=6; },
        { id="HOLD"; description="Legal hold"; type=4; }
      )
    },
    {
      id="3490"; description="IBM 3490 Cartridge";

      repositories=
      (
        { id="LIBR"; description="Library"; type=3;
next="OFFS"; },
        { id="OFFS"; description="Iron Mountain"; type=2;
next="LIBR"; }
      )
    }
  },
  {
    id="US02"; description="Los Angeles Data Center";

    media=
    (
      {
        id="LT0"; description="LT0 Cartridge";

        repositories=
        (
          { id="LIBR"; description="Library"; type=3; },
          { id="OFFS"; description="Iron Mountain"; type=2; }
        )
      },
      {
        id="3490"; description="IBM 3490 Cartridge";

        repositories=
        (
          { id="LIBR"; description="Library"; type=3; },
          { id="OFFS"; description="Iron Mountain"; type=2; }
        )
      }
    )
  }
}

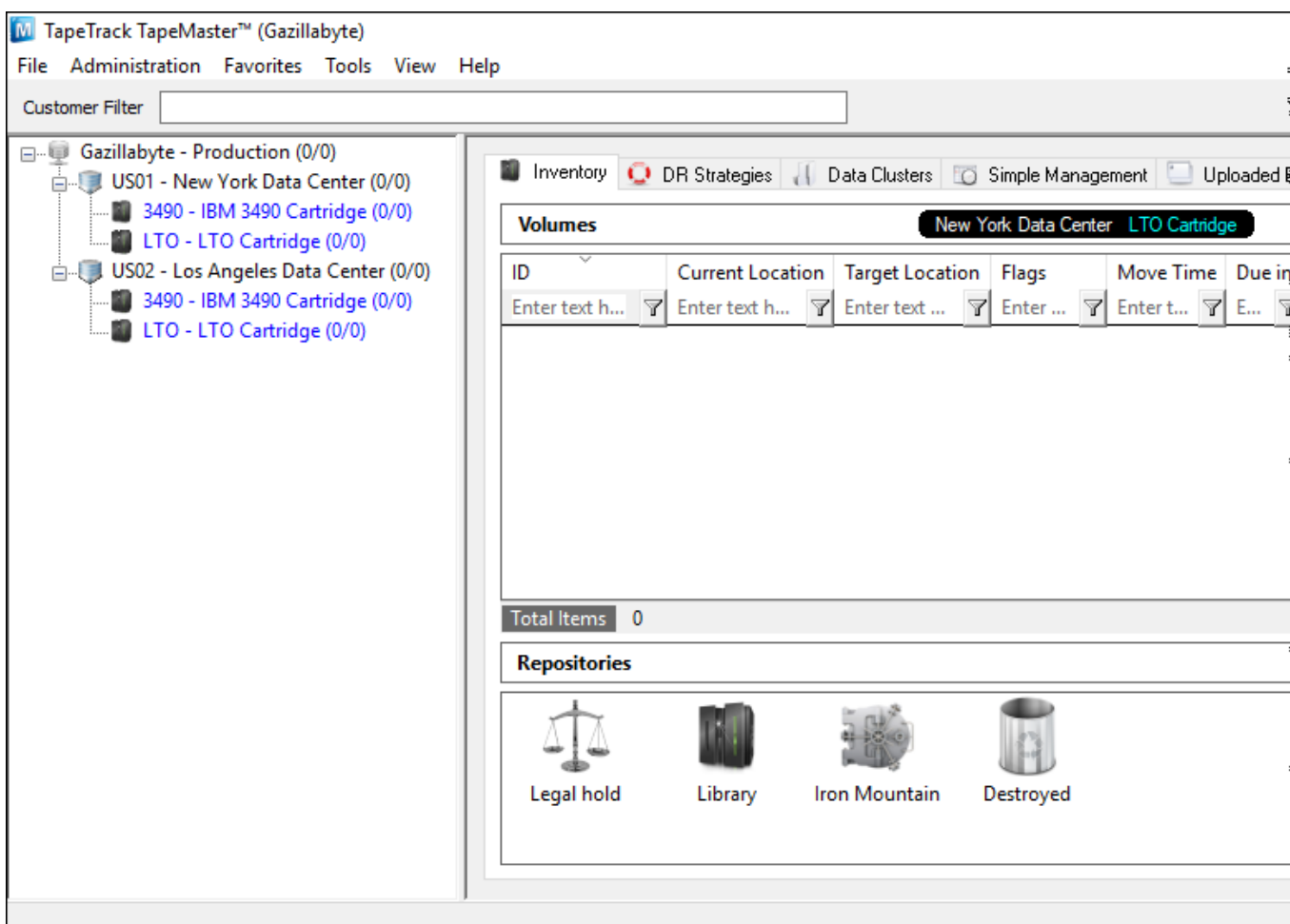
```

```
);  
};
```

Command line syntax

```
TMSS10BatchLoader -S user:-password@localhost -c master.cfg
```

Output Results



When creating multiple [Customers](#) with identical [Media Types](#) and/or [Repositories](#) it is possible to create a configuration file with these Attributes and include it in the master configuration file to save duplication of code blocks.

To create two customers, US01 and US02, with:

- [Media-ID](#): LTO, [Media Description](#): LTO Cartridge.
- [Media-ID](#): 3490, [Media Description](#): IBM 3490 Cartridge.
- [Repository-ID](#): LIBR, [Repository Description](#): Library, [Repository Type](#): 1, [Next Repository](#): OFFS.
- [Repository-ID](#): OFFS, [Repository Description](#): Iron Mountain, [Repository Type](#): 2 and [Next Repository](#): LIBR.

A configuration file may “include” the contents of another file using an include directive.

This directive has the effect of inlining the contents of the named file at the point of inclusion.



An include directive must appear on its own line in the input. It has the form:

```
@include "filename"
```

Any backslashes or double quotes in the filename must be escaped as ‘\’ and ‘\’’, respectively.

Configuration Files

master.cfg

```
setup=
{
  customers=
  (
    {
      id="US01"; description="New York Data Center";
      @include "include.cfg"
    },
    {
      id="US02"; description="Los Angeles Data Center";
      @include "include.cfg"
    }
  );
};
```

include.cfg

```
media=
(
  {
    id="LT0"; description="LT0 Cartridge";

    repositories=
    (
      { id="LIBR"; description="Library"; type=3;
```

```
next="OFFS"; },
        { id="OFFS"; description="Iron Mountain"; type=2;
next="LIBR"; }
    )
    },
    {
        id="3490"; description="IBM 3490 Cartridge";

        repositories=
        (
            { id="LIBR"; description="Library"; type=3;
next="OFFS"; },
            { id="OFFS"; description="Iron Mountain"; type=2;
next="LIBR"; }
        )
    }
)
```

Command line syntax

```
TMSS10BatchLoader -S user:-password@localhost -c master.cfg
```

Output Results

TapeTrack TapeMaster™ (Gazillabyte)

File Administration Favorites Tools View Help

Customer Filter

- Gazillabyte - Production (0/0)
 - US01 - New York Data Center (0/0)
 - 3490 - IBM 3490 Cartridge (0/0)
 - LTO - LTO Cartridge (0/0)
 - US02 - Los Angeles Data Center (0/0)
 - 3490 - IBM 3490 Cartridge (0/0)
 - LTO - LTO Cartridge (0/0)

Inventory DR Strategies Data Clusters Simple Management Uploaded

Volumes **New York Data Center LTO Cartridge**

ID	Current Location	Target Location	Flags	Move Time	Due in
Enter text h...	Enter text h...	Enter text ...	Enter ...	Enter t...	E...

Total Items 0

Repositories

- Library
- Iron Mountain

From: <https://rtfm.tapetrack.com/> - **TapeTrack Documentation**

Permanent link: <https://rtfm.tapetrack.com/cli/tmss10batchloader?rev=1572917647>

Last update: **2025/01/21 22:07**

