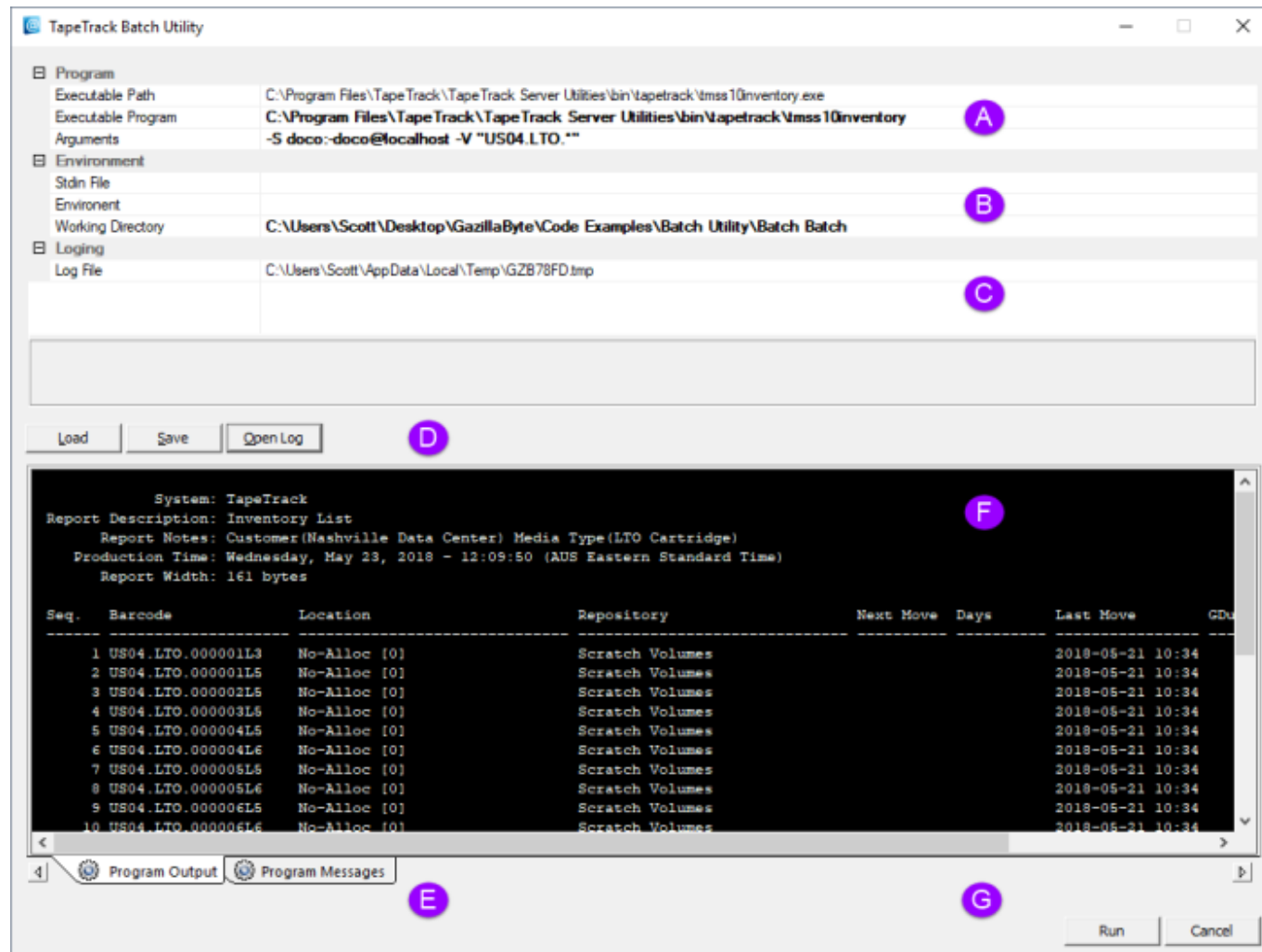


# TMSSBatch

TMSSBatch will open the TapeTrack Batch Utility, allowing simplified input of information to create a batch file for execution of a command line utility executable, including input of arguments, input files and specification of the working directory.



## Options

- **A Program variables**
  - **Executable Path** Full directory path to selected executable (non editable).
  - **Executable Program** Target executable program.
  - **Arguments** Arguments required for executable.
- **B Environmentable Variables**
  - **Stdin File** directory path and file for input to stdin if required.
  - **Environment** Environment variables if required (e.g. TMSSNOMD5).
  - **Working Directory** Working directory to load and/or save settings to/from.
- **C Logging**
  - **Log File** Directory path to save log file to.
- **D Control Buttons**
  - **Load** Load variables from file.

- **Save** Save current variables to file.
- **Open Log** Open current log file.
- **E Message Tabs**
  - **Program Output** Output from executed batch file, from stdout.
  - **Program Messages** Output from executed batch files, from stderr.
- **F Display Panel** Display panel for batch file output.
- **G Control Buttons**
  - **Run** Execute batch file script.
  - **Cancel** Exit Batch Utility.

## Technical Support

The TapeTrack Software is commercially supported by a full time help desk staff. If you are experiencing problems or want some advice on how to configure or use the product please see the [Accessing Technical Support](#) page.

## Exit Statuses

1. **zero** Program has ended successfully.
2. **non-zero** Program has not ended successfully.

## Changelog

Cannot load rss feed.

From:  
<https://rtfm.tapetrack.com/> - **TapeTrack Documentation**

Permanent link:  
<https://rtfm.tapetrack.com/cli/tmssbatch?rev=1653955238>

Last update: **2025/01/21 22:07**

