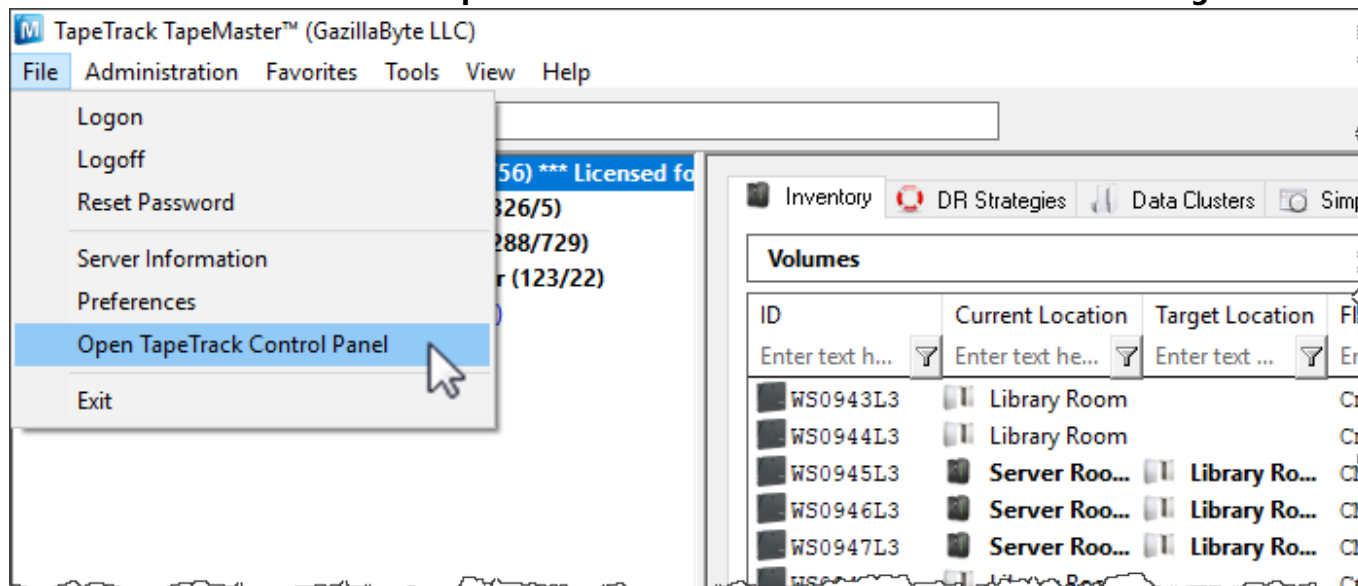


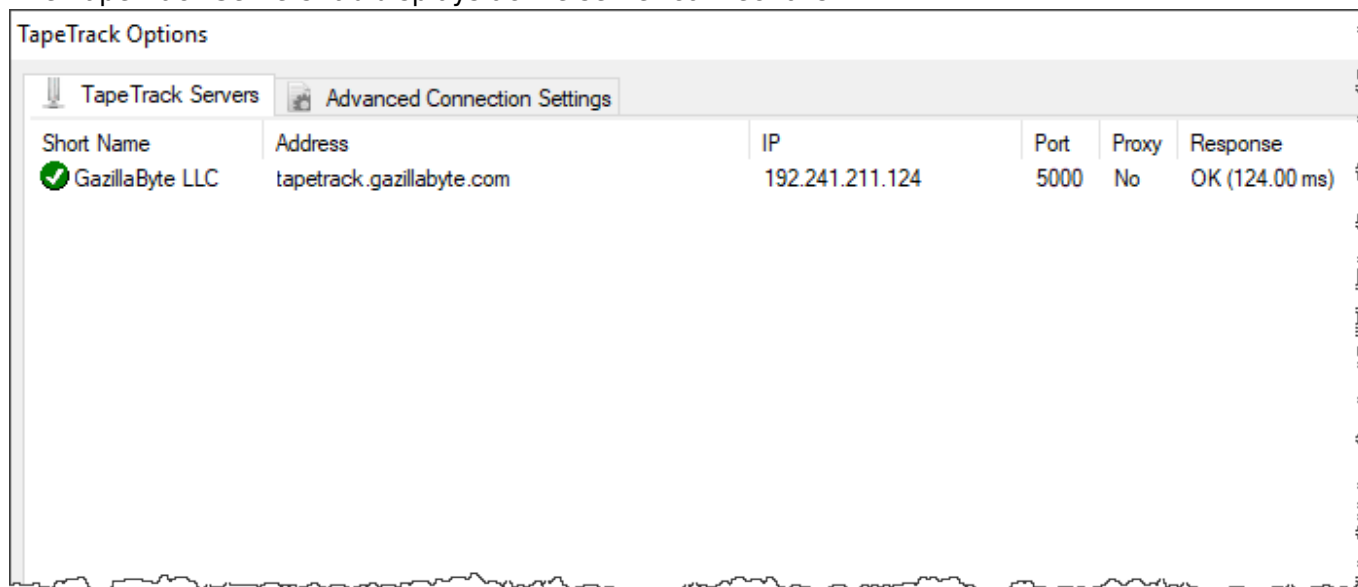
Open TapeTrack Control Panel

The **TapeTrack Control Panel** can be accessed from the File Menu. The **TapeTrack Control Panel** is divided into two tabs: **TapeTrack Servers** and **Advanced Connection Settings**.



TapeTrack Servers

The TapeTrack Servers tab displays active server connections.



Right-Click Operations

There are four options available when right-clicking in the TapeTrack Servers tab.

image.png

TBR

- **Add**: Launches the Server Information window to add additional connections. There are four

fields in the Server Information Window.[image](#)

- **Short Name:** How this connection will be displayed in the TapeTrack login window.
- **Address:** The address of the TapeTrack Server.
- **IP:** The IP of the Server.
- **Port:** The port of the TapeTrack Server.
- **Proxy:** If set to “true”, the HTTP Proxy Settings will need to be set in the “Advanced Connection Settings” tab. See below.
- **Delete:** Deletes the Server from the list.
- **Properties:** Launches the Server Information window above so that changes can be made to a Server.
- **Create Desktop Shortcut:** Places a shortcut to this connection on the desktop of your Windows PC.

Advanced Connection Settings

The **Advanced Connection Settings** tab provides additional settings for when a Server uses an HTTP Proxy. It has the following fields:

- **Address:** The IP Address or Name of the HTTP Proxy Server.
- **Port:** The TCP/IP Port of the HTTP Proxy Server.
- **User ID:** The User ID for Proxy Authentication (if required).
- **Password:** The Password for Proxy Authentication (if required).
- **Automatically detect HTTP Proxy:** Click this button to automatically detect an existing HTTP Proxy Connection.

image.png

TBR

From:
<https://rtfm.tapetrack.com/> - **TapeTrack Documentation**

Permanent link:
https://rtfm.tapetrack.com/common/control_panel?rev=1507067330

Last update: **2025/01/21 22:07**

