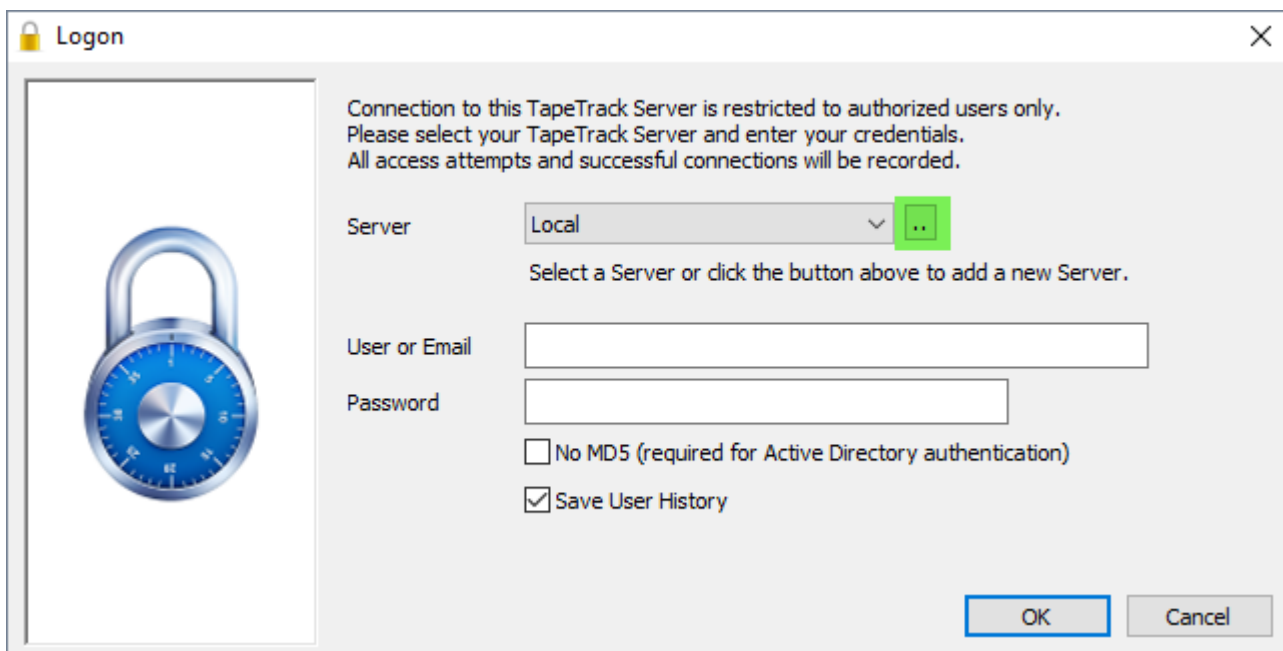
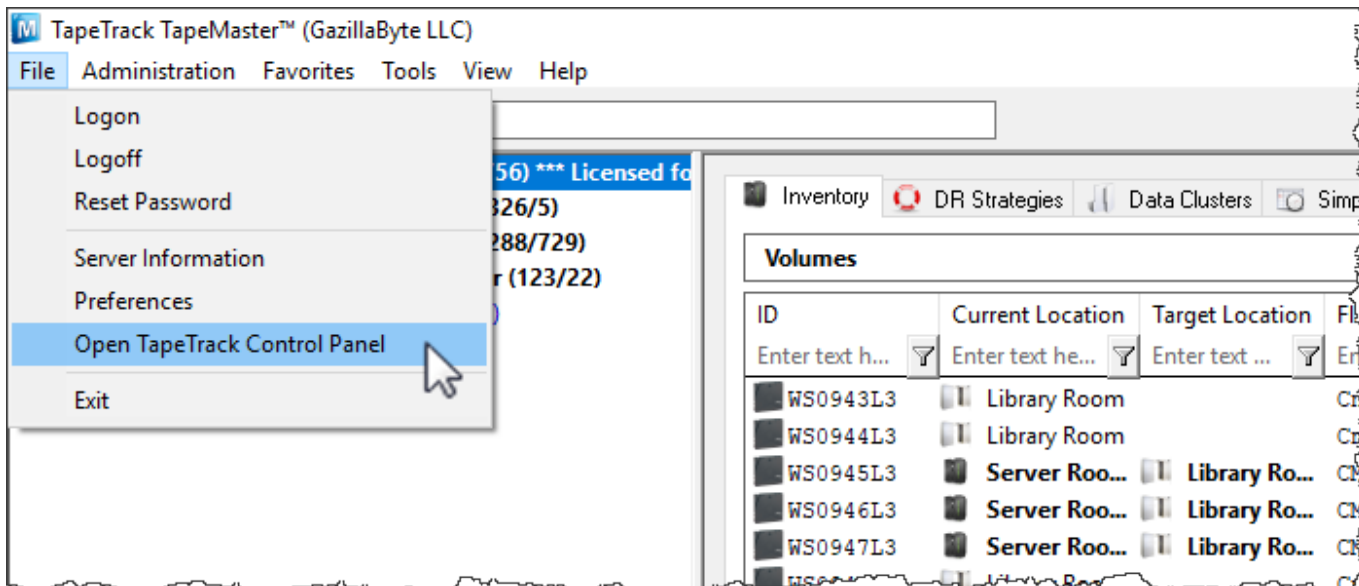


Open TapeTrack Control Panel

The **TapeTrack Control Panel** can be accessed from the File Menu→Open TapeTrack Control Panel from TapeMaster and Checkpoint, or by clicking the more button (...) to the right of the server drop-down box on the login screen on TapeMaster, Checkpoint and Lite.



The **TapeTrack Control Panel** is divided into two tabs: **TapeTrack Servers** and **Advanced Connection Settings**.

TapeTrack Servers

The TapeTrack Servers tab displays active server connections.

TapeTrack Options

TapeTrack Servers | Advanced Connection Settings

Short Name	Address	IP	Port	Proxy	Response
✔ GazillaByte LLC	tapetrack.gazillabyte.com	192.241.211.124	5000	No	OK (124.00 ms)

Right-Click Operations

There are four options available when right-clicking in the TapeTrack Servers tab.

TapeTrack Options

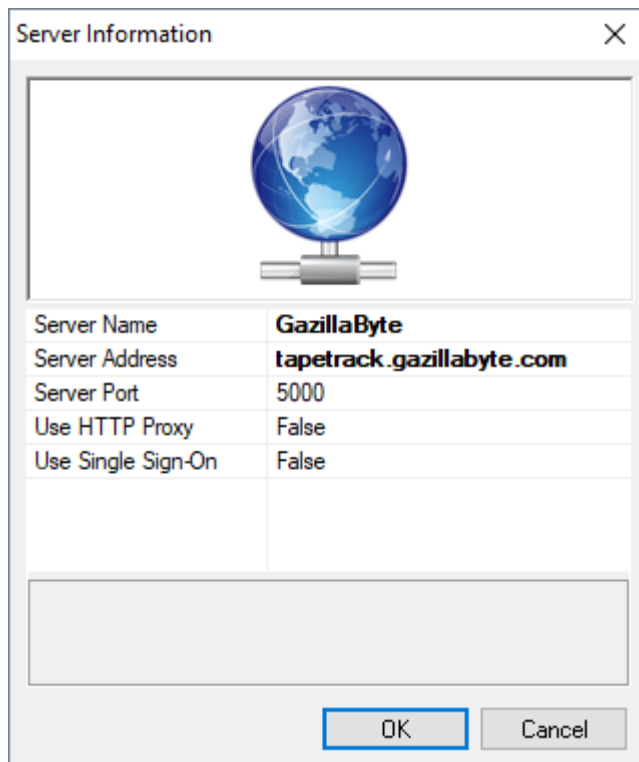
TapeTrack Servers | Advanced Connection Settings

Short Name	Address	IP	Port	Proxy	Response
✔ GazillaByte LLC	tapetrack.gazillabyte.com	192.241.211.124	5000	No	OK (124.00 ms)

Right-click context menu options:

- Add
- Delete
- Properties
- Create Desktop Shortcut

- **Add:** Launches the Server Information window to add additional connections. There are four fields in the Server Information Window.

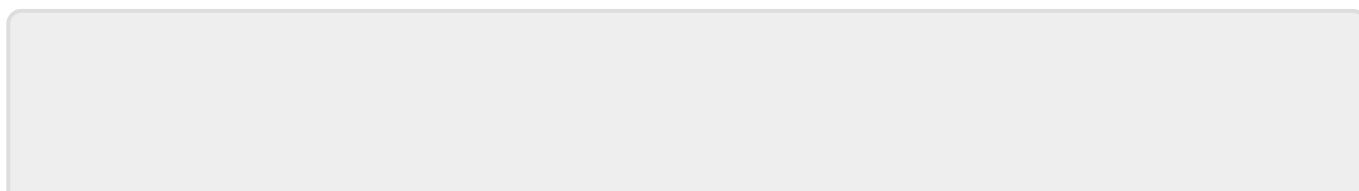


- **Short Name:** How this connection will be displayed in the TapeTrack login window.
- **Address:** The address of the TapeTrack Server.
- **IP:** The IP of the Server.
- **Port:** The port of the TapeTrack Server.
- **Proxy:** If set to “true”, the HTTP Proxy Settings will need to be set in the “Advanced Connection Settings” tab. See below.
- **Delete:** Deletes the Server from the list.
- **Properties:** Launches the Server Information window above so that changes can be made to a Server.
- **Create Desktop Shortcut:** Places a shortcut to this connection on the desktop of your Windows PC.

Advanced Connection Settings

The **Advanced Connection Settings** tab provides additional settings for when a Server uses an HTTP Proxy. It has the following fields:

- **Address:** The IP Address or Name of the HTTP Proxy Server.
- **Port:** The TCP/IP Port of the HTTP Proxy Server.
- **User-ID:** The User-ID for Proxy Authentication (if required).
- **Password:** The Password for Proxy Authentication (if required).
- **Automatically detect HTTP Proxy:** Click this button to automatically detect an existing HTTP Proxy Connection.



From:

<https://rtfm.tapetrack.com/> - **TapeTrack Documentation**

Permanent link:

https://rtfm.tapetrack.com/common/control_panel?rev=1571072030

Last update: **2025/01/21 22:07**

