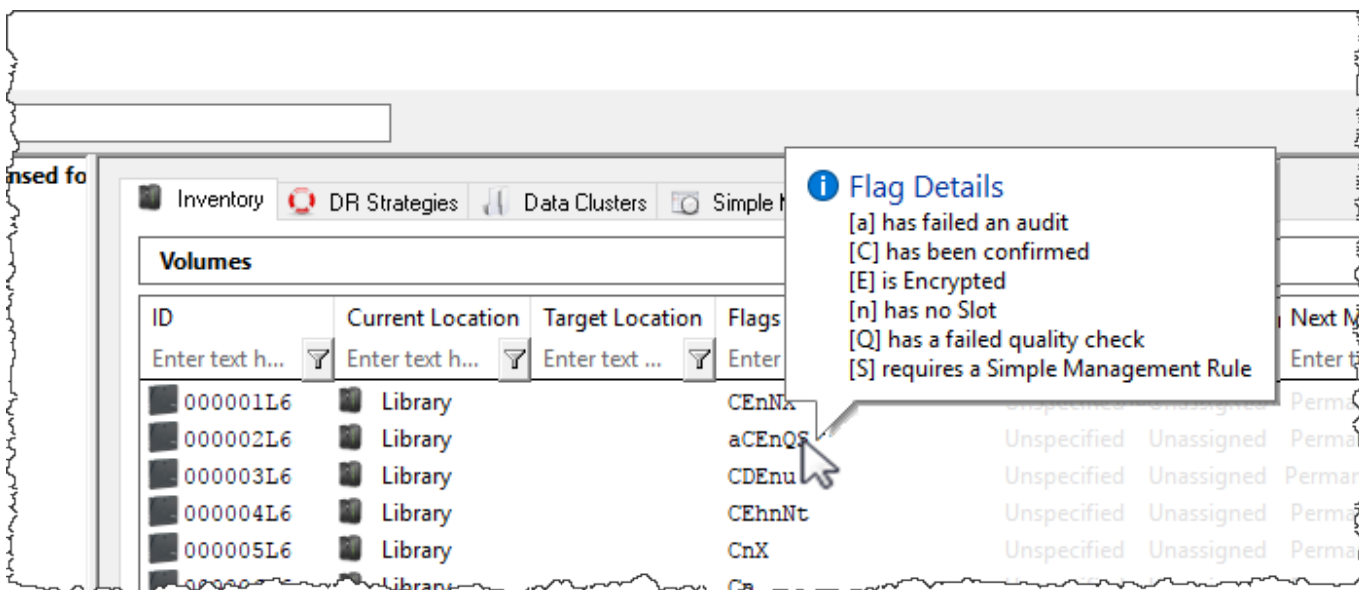


# Overview

Flags indicate the status of a Volume including its movements, Slot, location, Container, audits, and more.



## Flag Definitions

- **A:** Volume has a Container Security Tag assigned.
- **a:** Volume has failed a Physical Audit or a Logical Audit (Set by Reconciliation).
- **B:** Volume is a Container.
- **C:** Volume is confirmed in its current Repository.
- **c:** Volume is part of a Consignment.
- **D:** Volume has a Move Date.
- **d:** Volume Move Date is in the past.
- **E:** Volume is encrypted.
- **F:** Volume has been set as a [Favorite](#)
- **G:** Volume has missed a reporting deadline.
- **H:** Volume Move Date is a Holiday.
- **h:** Volume is hidden (ghosted).
- **I:** Volume is moving internally (from one Slot to another in the same Repository).
- **K:** Volume has been Picked-Up.
- **L:** Volume has an update lock and cannot be updated by anyone other than the [tapemaster User](#).
- **I:** Volume has a move lock and cannot be moved.
- **M:** Volume is moving from one Repository to another.
- **m:** Volume has a Home Slot.
- **N:** Volume has a Description.
- **n:** Volume has no Slot assigned.
- **O:** Volume is in the Primary Offsite Repository.
- **o:** Volume is overdue at its Target Repository.
- **p:** Volume has been set as Move Pending as its Move Date has been exceeded (Set by [TMSS10MovePending](#)).

- **Q**: Volume has been flagged as unhealthy by a VeriTape system.
- **r**: Volume has been requested back from a Third Party.
- **S**: Volume always uses Simple Management.
- **s**: Volume Move Date was last set by Simple Management.
- **t**: Do not assign a Slot to this Volume.
- **U**: Volume has been scanned out of the current Repository using either TapeTrack Lite or TapeTrack Check Point.
- **u**: Volume has been flagged as a duplicate.
- **W**: Volume has a warning (has moved back to its original Repository without having been confirmed at its destination).
- **X**: Volume has been Audit-Scanned.
- **Z**: Volume is Scratch.

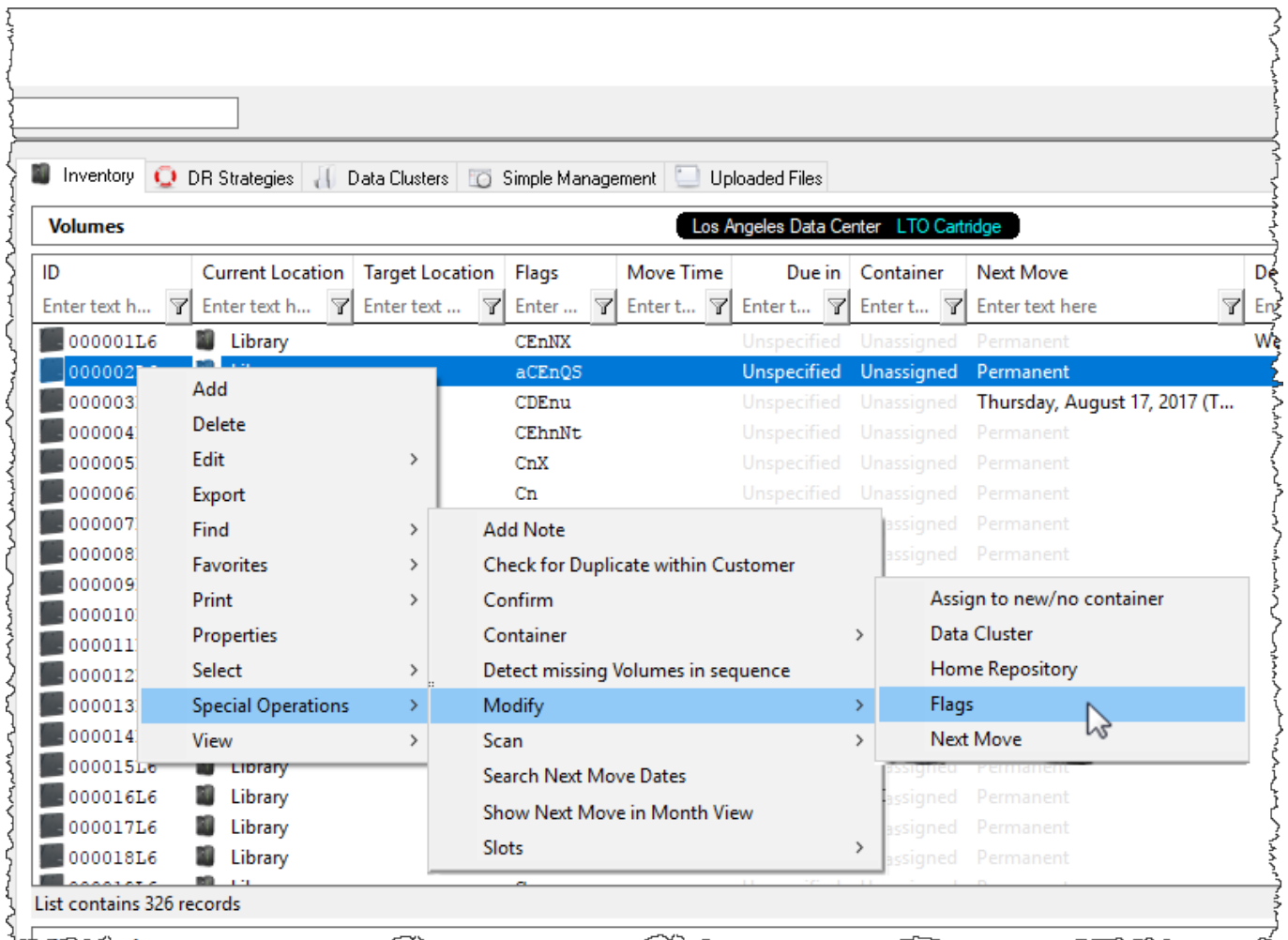
## Using Flags

### Setting Flags

There are two ways to set flags:

#### Method 1

Right-click the Volume/s in the Volume List, hover over Special Operations, then Modify and select Flags.



For each flag in the Modify Flags window, there are three options:

- **Value:** Value can be set to one of four options:
  1. **Do not change:** Leaves the Flag as is.
  2. **Add Flag:** Adds the selected Flag to the selected Volume(s).
  3. **Remove Flag:** Removes the selected Flag from the selected Volume(s).
  4. **Toggle Flag:** Will add the selected flag if it is not present and remove it if it is.
- **Set Count:** When multiple Volumes are selected, the Set Count will display how many Volumes have that flag.
- **Not-Set Count:** When multiple Volumes are selected, the Not-Set Count will display how many Volumes do not have that flag.

## Method 2

Go to the Options Tab in the Volume Properties Window, and toggle the flags section. Set the desired Tags to **True** to add them or **False** to deactivate them. [image](#) The Flags in the Options Tab are as follows:

- **Has Consignment (c)** : When **True**, the selected Volume is part of a Consignment.
- **Has Description (N)**: When **True**, the selected Volume has a description.
- **Do Not Slot (t)**: When **True**, the selected Volume cannot be slotted.
- **Is a Container (B)**: When **True**, the selected Volume is a Container.
- **Movement Required (M)**: When **True**, the selected Volume is either Moving or needs to be

Moved.

- **Hidden (h):** When **True**, the selected Volume is hidden and cannot be viewed in the Volume List. Hidden Volumes can be seen by modifying options in the Preferences Window under the File Menu.
- **Moving Internal (I):** When **True**, the selected Volume is moving from one Slot to another in the same Repository.
- **Simple Management (S):** When **True**, the selected Volume may only Move when a corresponding [Simple Management Rule](#) exists.
- **Move Pending (p):** When **True**, the selected Volume has been set in a Move Pending status by [TMSS10MovePending](#) and has exceeded its Move Date.
- **Overdue (o):** When **True**, the selected Volume is overdue at its Target Repository.
- **Next Move Date exceeded (p):** When **True**, the selected Volume has exceeded its Move Date.
- **Has Tag (A):** When **True**, the selected Volume is a Container and has a Security Tag assigned.
- **No Slot (n):** When **True**, the selected Volume has no Slot assigned.
- **Move Lock (I):** When **True**, the selected Volume is in a Move Lock and cannot be moved.
- **Update Lock (L):** When **True**, the selected Volume has an Update Lock and can only be updated by a User with tapemaster Rights.
- **Off-site (O):** When **True**, the selected Volume is at a Repository that is Offsite.
- **Move Date is a Holiday (H):** When **True**, the selected Volume has a Move Date that is marked as a Holiday in the Server Administration Window under the Administration Menu.
- **Audit Failure (a):** When **True**, the selected Volume has failed a physical audit with either TapeTrack Sync or another Reconciliation process.

From:

<https://rtfm.tapetrack.com/> - **TapeTrack Documentation**

Permanent link:

[https://rtfm.tapetrack.com/common/volume\\_flags?rev=1503682834](https://rtfm.tapetrack.com/common/volume_flags?rev=1503682834)

Last update: **2025/01/21 22:07**

