

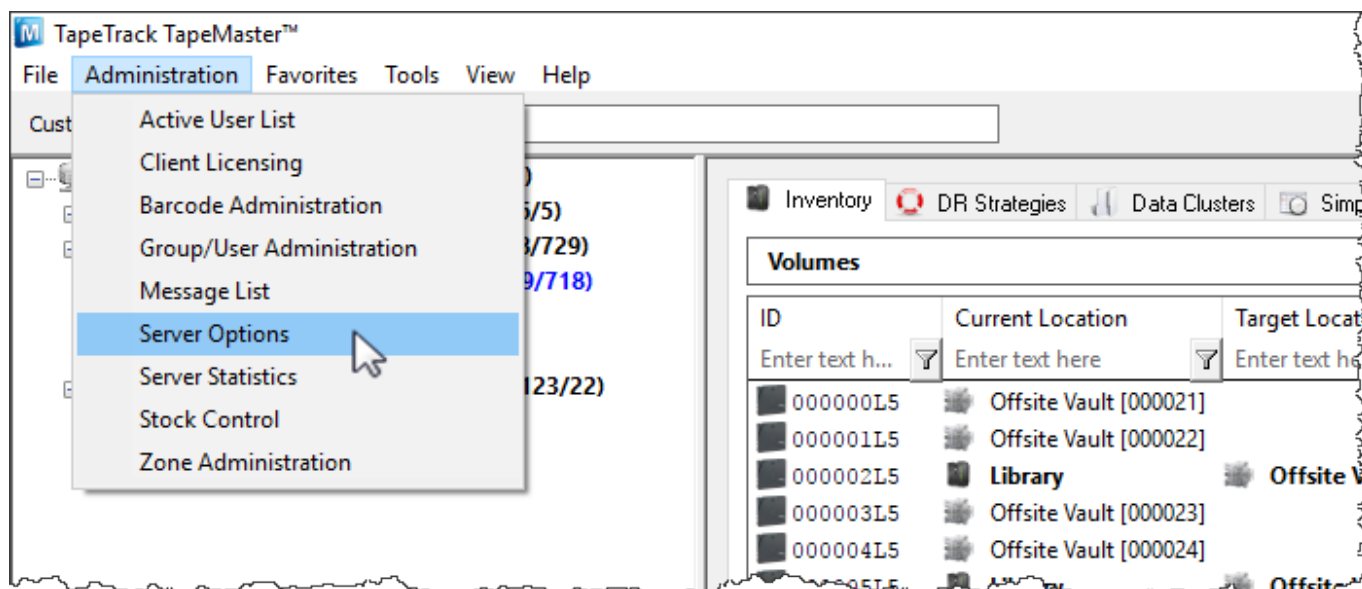
Attribute List Values

Attribute Lists allow you to set a defined list of Attribute Values for a user to select from. This ensures that all Attribute Values entered against a **Volume** are limited to supplied list, removing the ability to enter unwanted values or spelling differences (eg Removed or removed) as well as increasing productivity by removing the need to retype common Attribute Values.

The following example illustrates the creation and implementation of two Attribute Lists, Weekly Backup with the values of the days of the week and Manufacturer with the values of the **Volume** brands Dell, IBM, Imation and Sony.

Setting The Attribute List

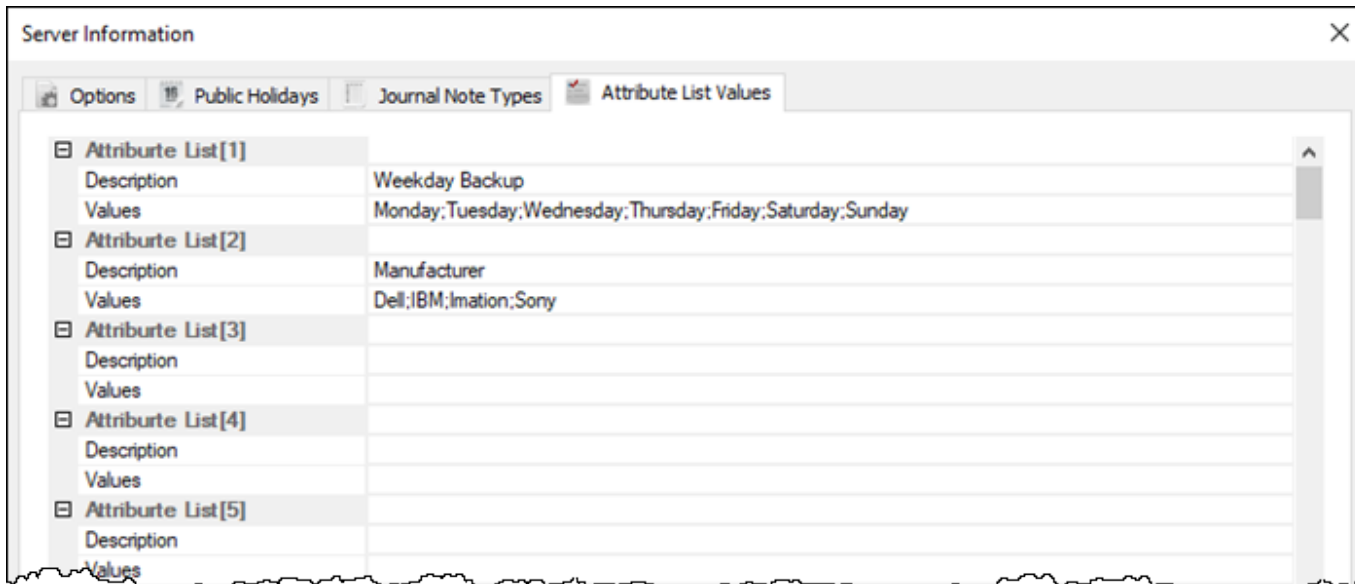
To open the Server Options in TapeMaster, select Administration → Server Options from the main menu.



Select the tab Attribute List Values.

In the section Attribute List [1], enter the string Weekly Backup into the field Description, along with the Attribute Values separating values by semicolons, Monday;Tuesday;Wednesday;Thursday;Friday;Saturday;Sunday into the field Values.

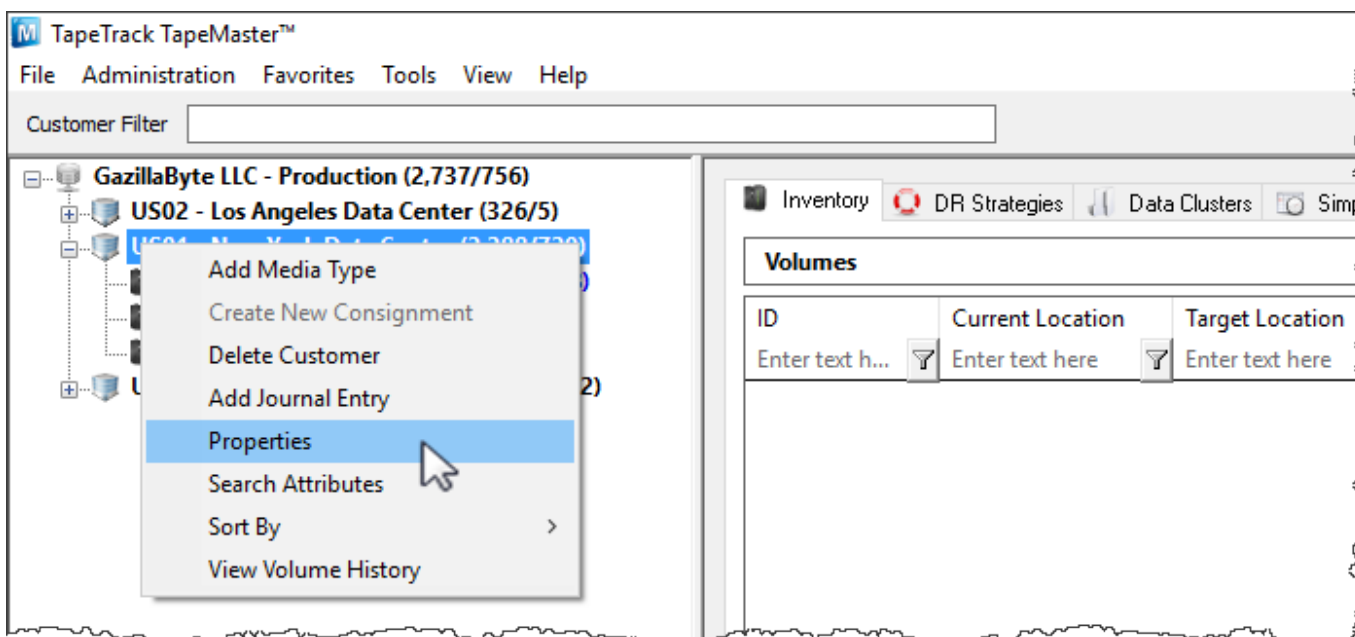
In the section Attribute List [2], enter the string Manufacturer into the field Description, along with the Attribute Values, separating values by semicolons, Dell;IBM;Imation;Sony.



Once all Lists have been added, click Save to add Values to the Framework Server.

Adding Extended Attributes To TapeMaster

Right-click the required [Customer](#) from the [Customer Tree](#) and select Properties



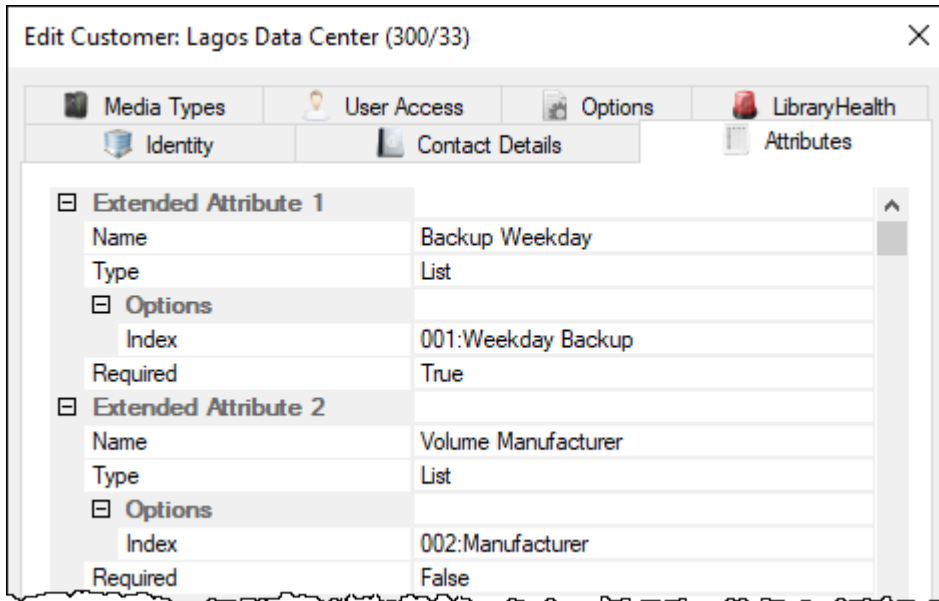
From the Edit Customer window, select the Attributes tab.

Under Extended Attribute 1,

- Enter a descriptive name for the Attribute, Backup Weekday.
- From the Type field select List to display the Options fields.
- From the field Index, select the required list, in this case Weekday Backup.
- Set Required to True to have this list displayed in Lite when Sending Volumes.

Under Extended Attribute 2,

- Enter a descriptive name for the Attribute, Volume Manufacturer.
- From the Type field select List to display the Options fields.
- From the field Index, select the required list, in this case Manufacturer.
- Set Required to False as it is not required to be displayed in Lite when Sending [Volumes](#).

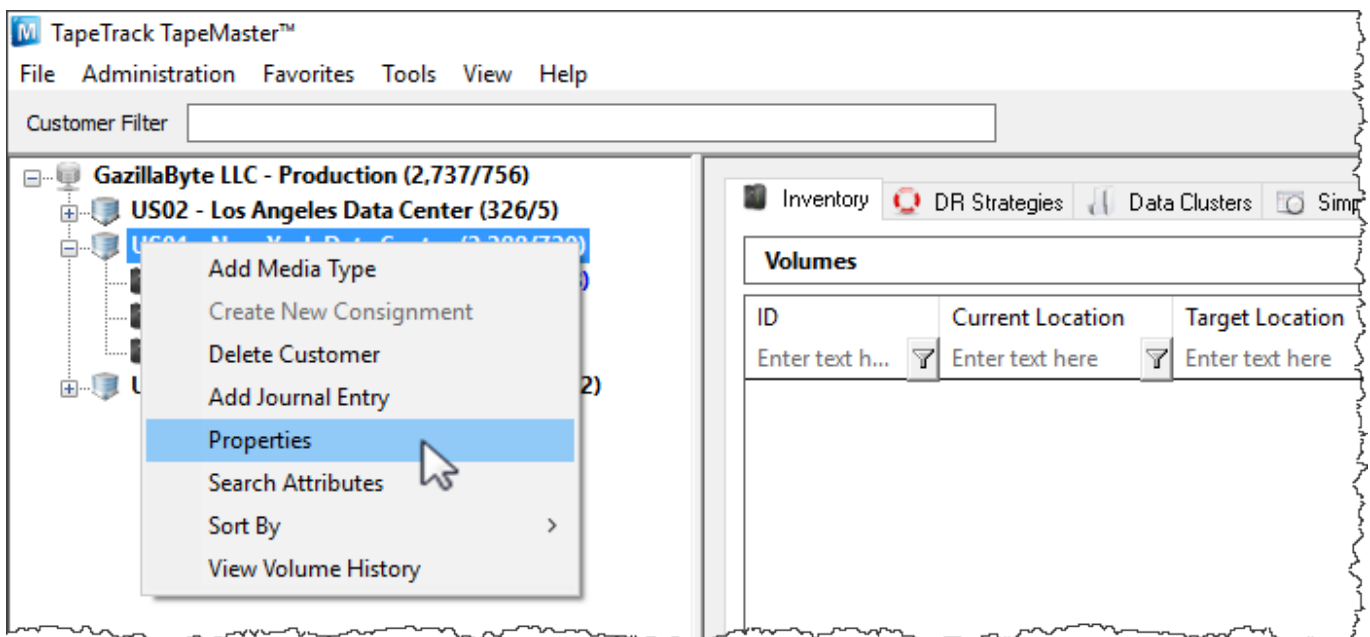


Click Save to update the information in TapeTrack.

Copying Extended Attributes

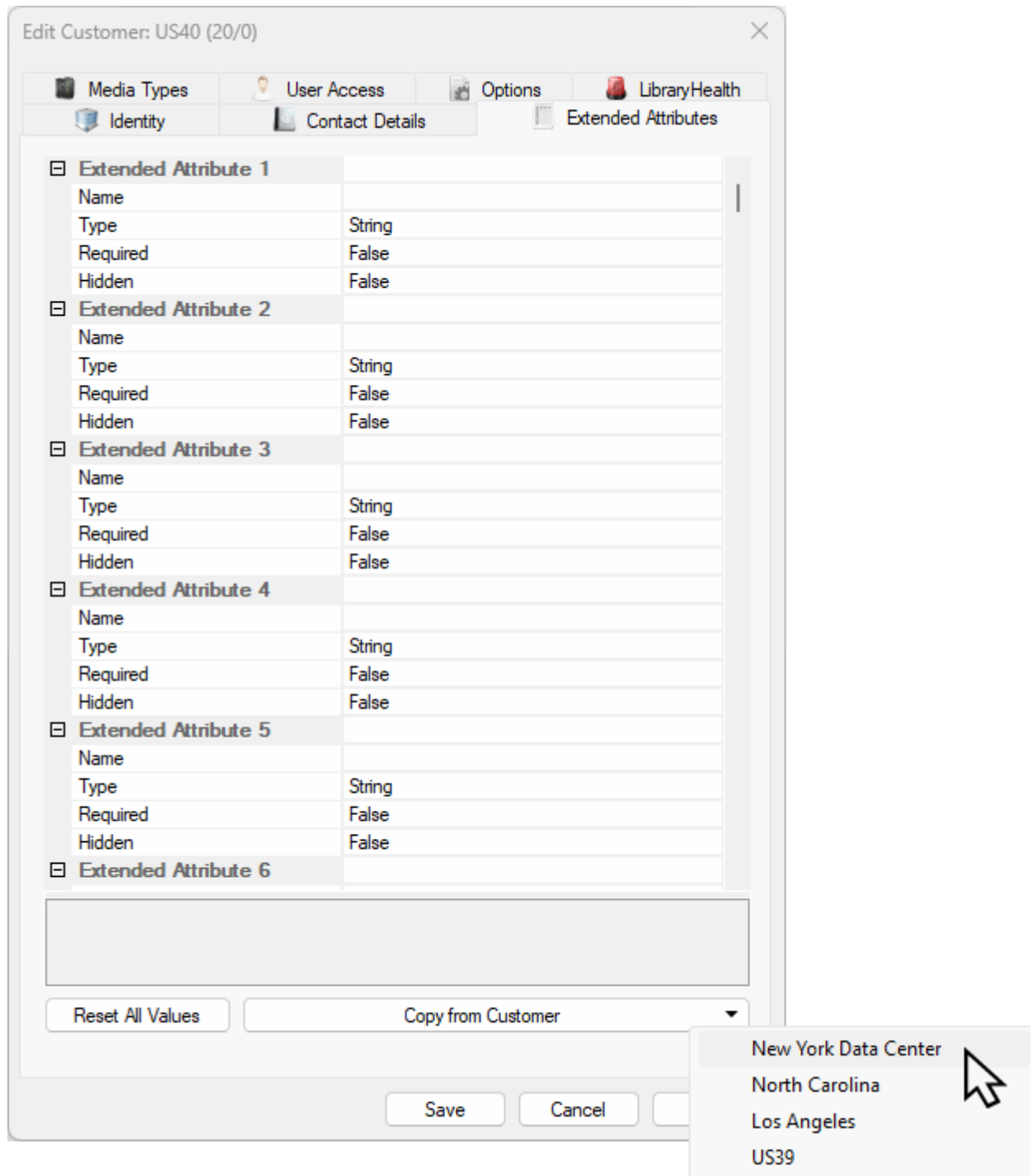
If you already have a Customer setup with the same attributes, it is possible to copy them over with a one click action.

Right-click the required [Customer](#) from the [Customer Tree](#) and select Properties



From the Edit Customer window, select the Attributes tab.

At the lower section of the Attributes window, select the Customer-id to copy from the Copy from customer drop box and then click Save to commit the new attribute values.



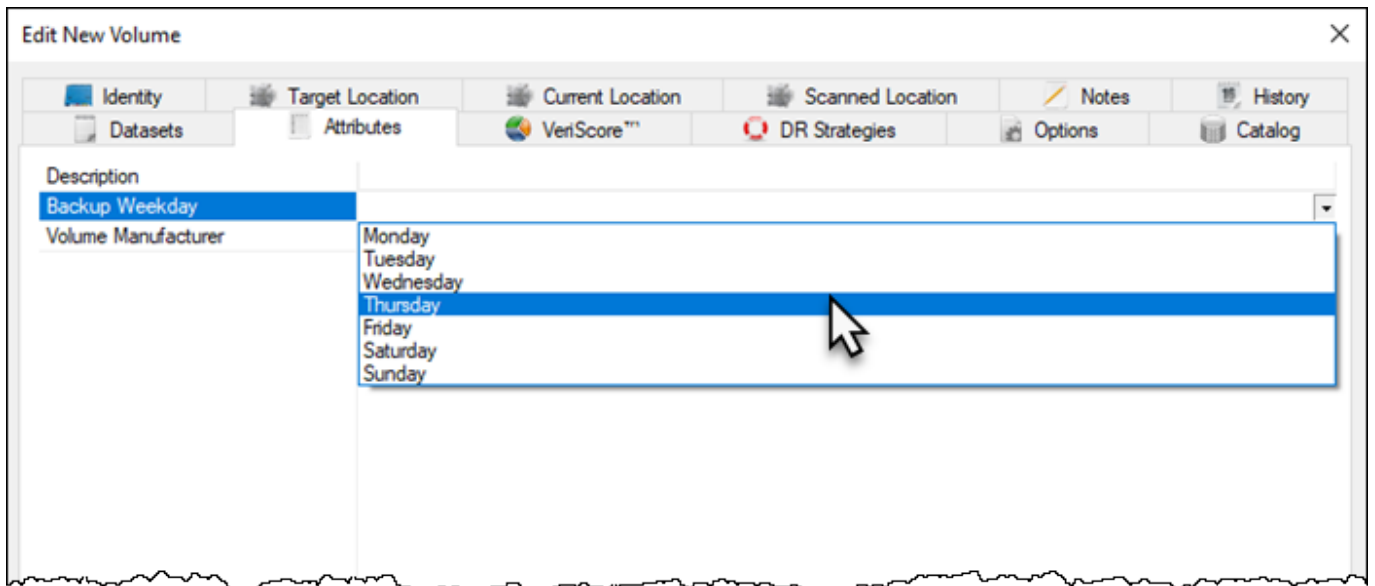
Setting Extended Attributes

Setting Extended Attributes Via TapeMaster

When Adding or Editing a [Volume](#) select the Attributes tab.

From the available Attributes, select the required Attribute Value from the drop-down list by clicking on the right of each field and clicking the drop-down list arrow to view available options. In this

example, we are setting Backup Weekday to Thursday.

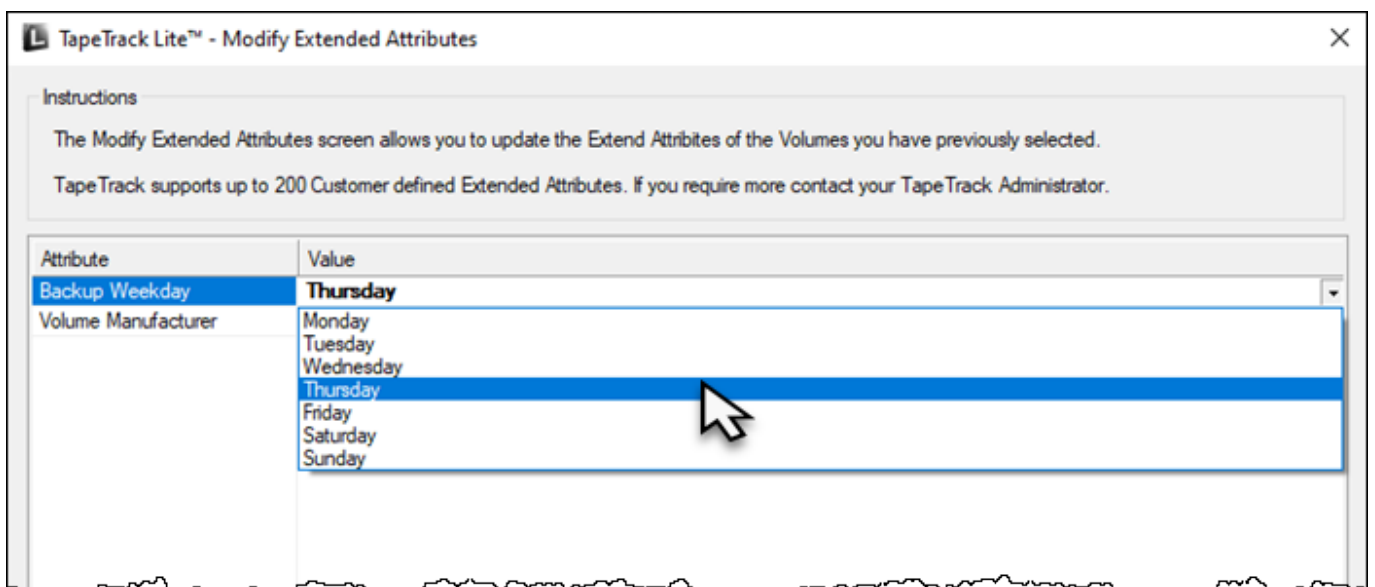


Once all values are entered, click Save to update Extended Attribute Values.

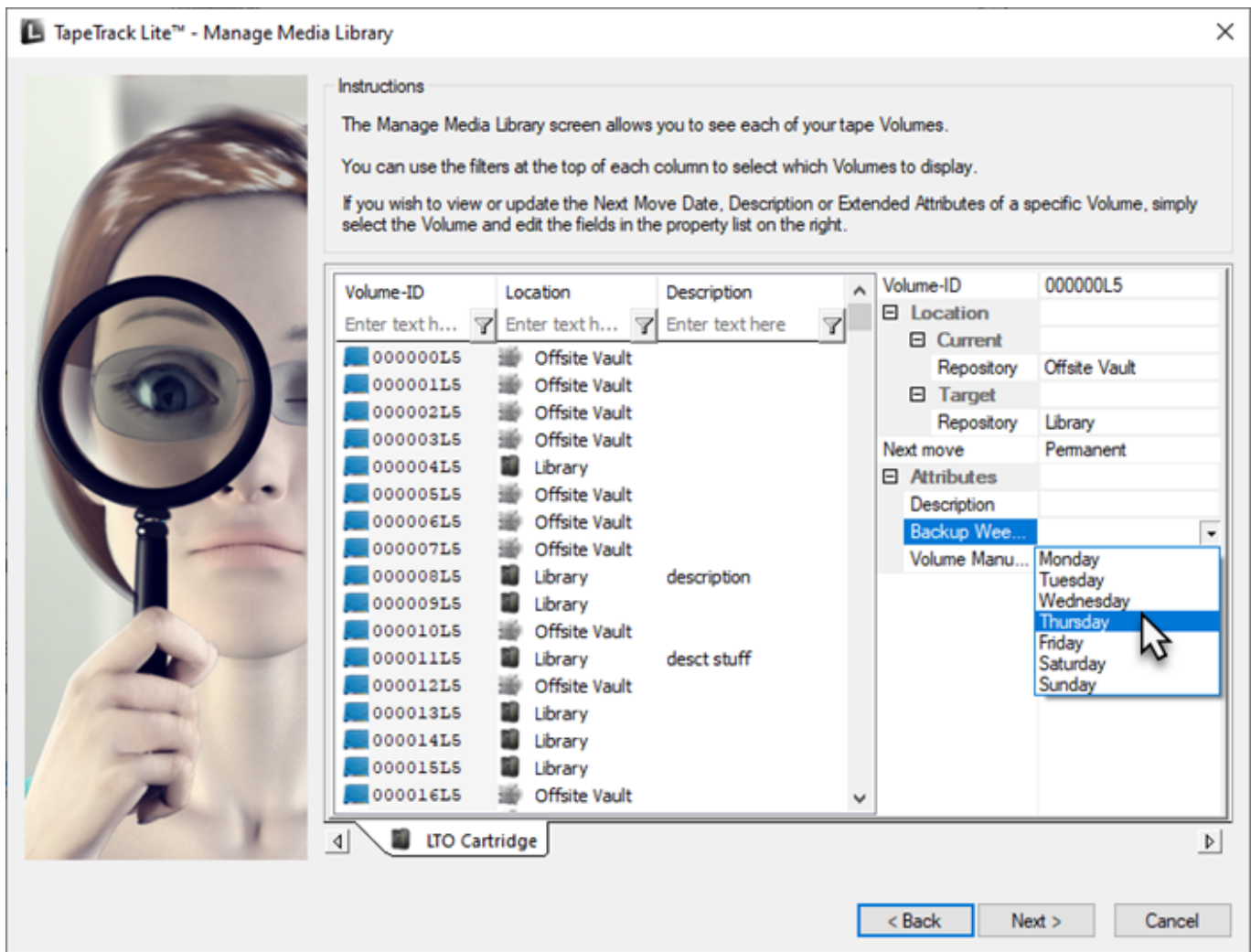
Setting Extended Attributes Via Lite

The Extended Attributes can be added/modified using the functions [Send](#) and [Library Management](#).

Documentation on how to add/modify Extended Attributes when using Lite's [Send function](#) can be viewed [here](#)



Documentation on how to add/modify Extended Attributes when using Lite's [Library Management Function](#) can be viewed [here](#).



cookbook, attribute

From: <https://rtfm.tapetrack.com/> - **TapeTrack Documentation**

Permanent link: https://rtfm.tapetrack.com/cookbook/attribute_list_values

Last update: **2025/09/05 00:20**

