

# Commvault

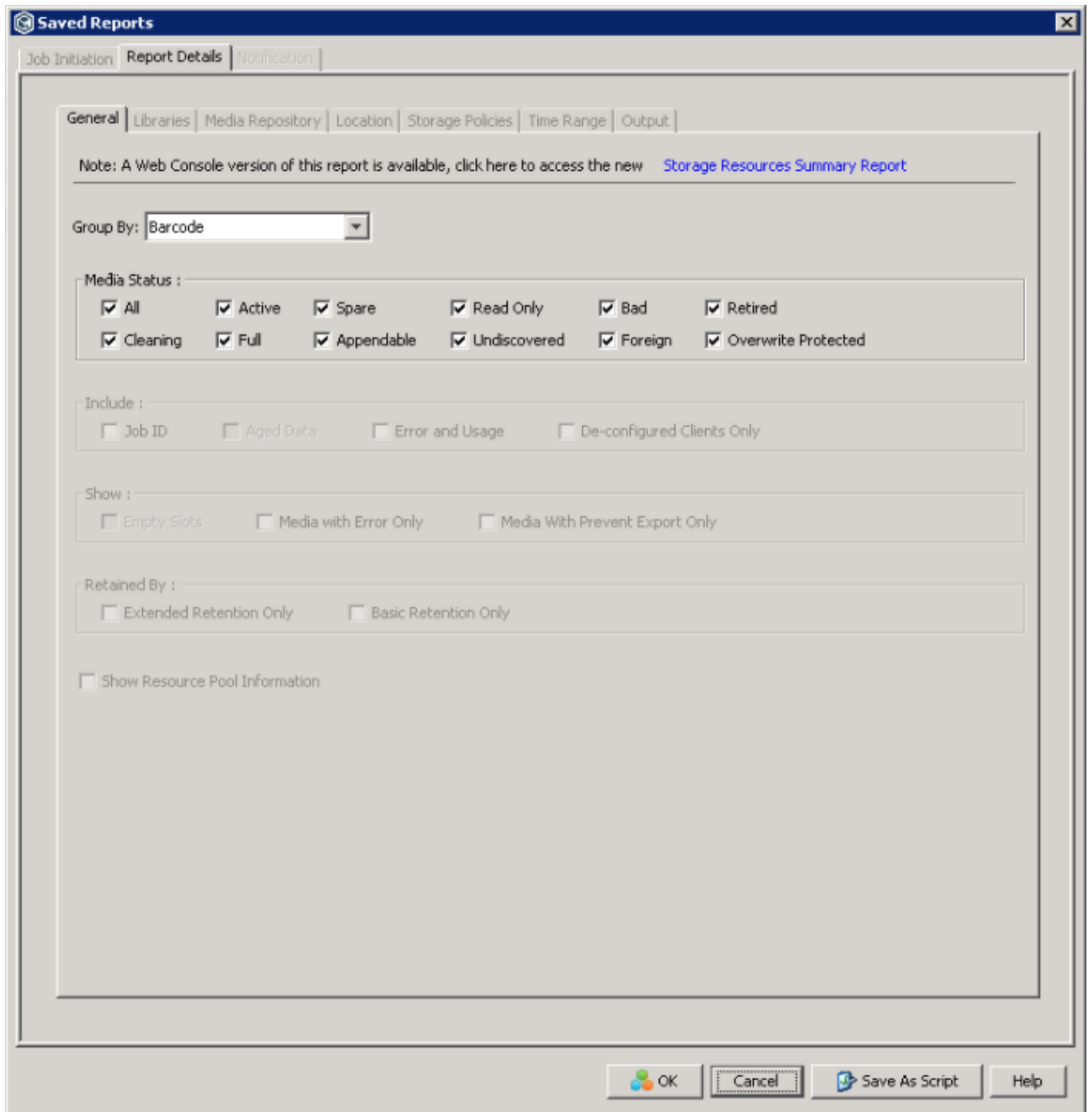
**Commvault** software is an enterprise-level data platform that contains modules to back up, restore, archive, replicate, and search data.

## Storage Information Report

The Storage Information Report is created via the Commvault GUI and output to CSV format, accessible from the reports tab.

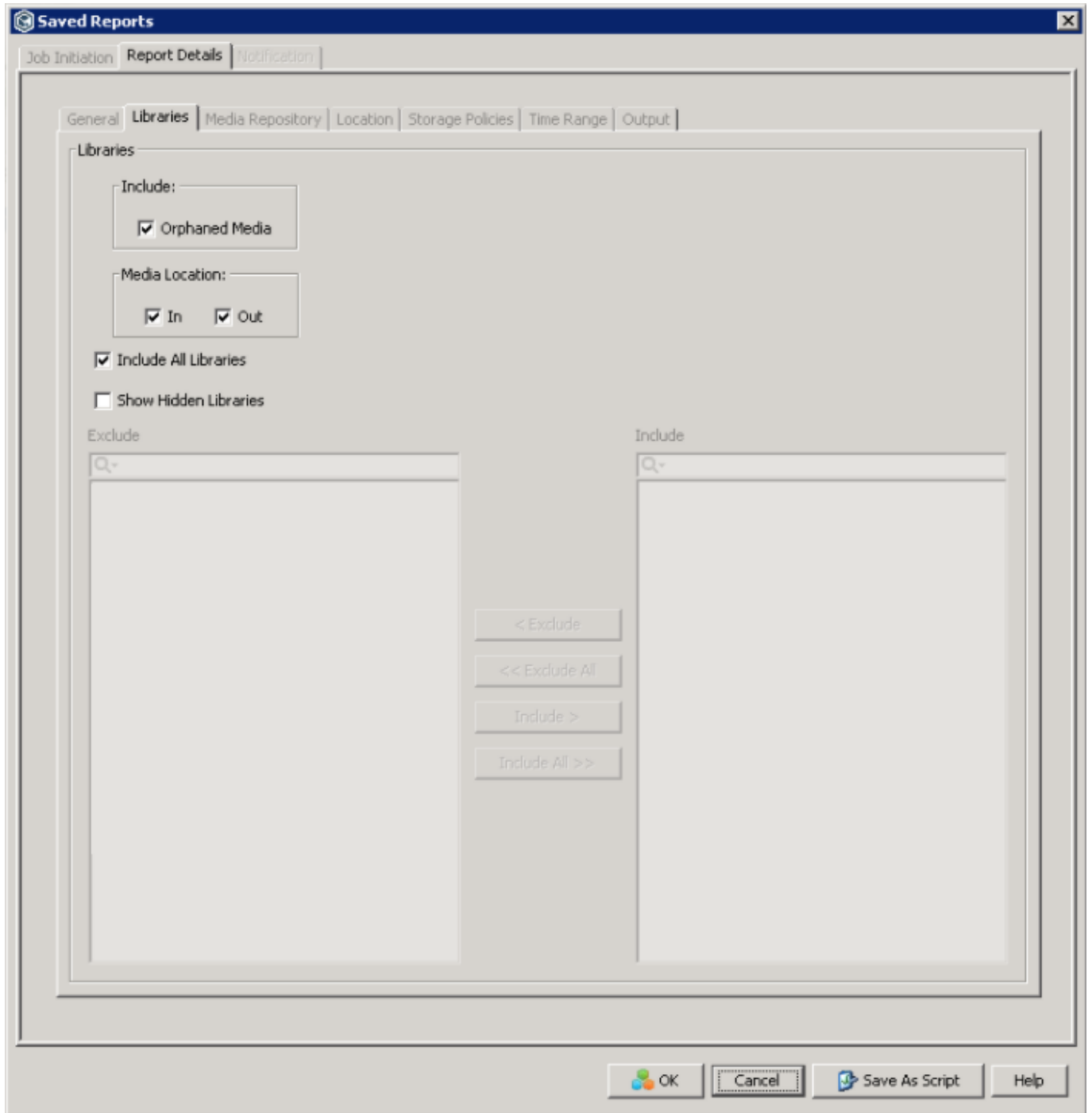
Report Details - General tab.

Group Volumes by barcode, include all media statuses.

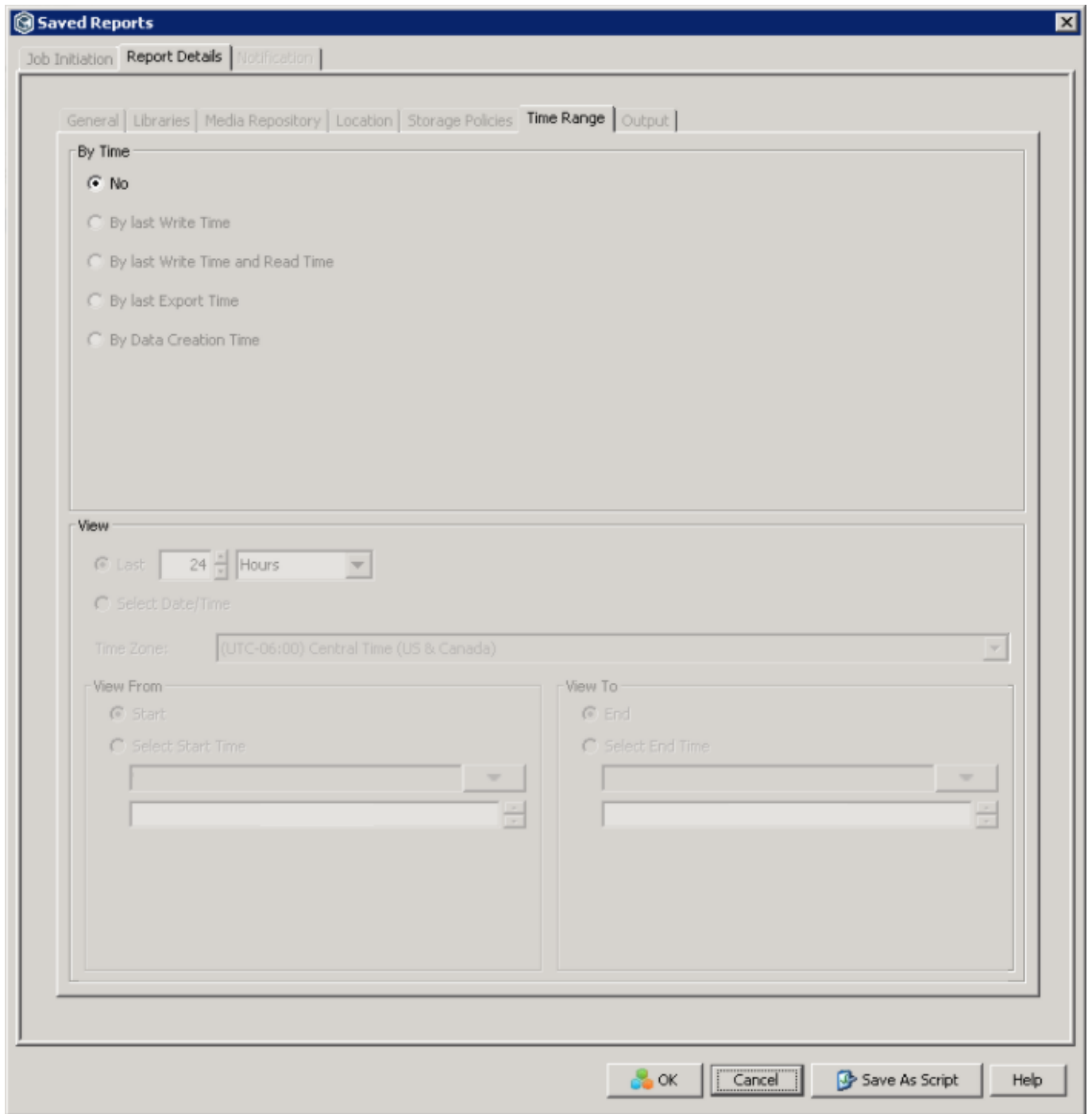


Report Details - Libraries tab.

Include orphaned media, both in and out of all libraries.

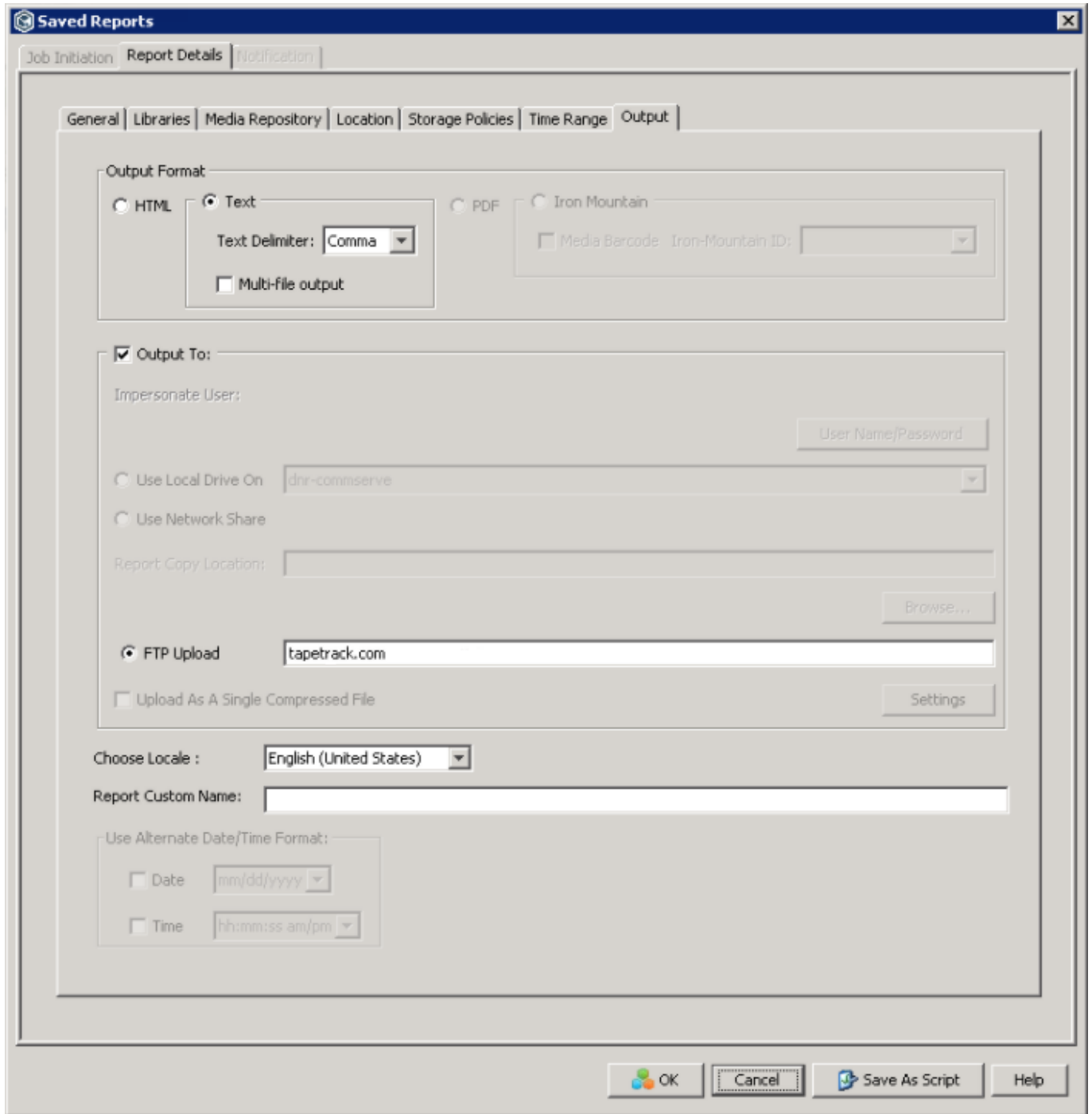


Report Details - Time Range tab.



Report Details - Output tab.

FTP address is only an example, you will need to add your correct FTP address.



## Example Storage Information Report

### Storage Information Report

Report generated on 05/06/2014 14:08:02

CommCell ID: F4720

CommCell: cmback01

-- Report Criteria --

#Group By:Bar Code

#Media Status:All

#Media Location:In, Out

#Include: None

```
#Show Media With Error Only: No
#Show Media With Prevent Export Only: No
#Show Media Retained by Extended Retention Only: No
#Show Media Retained by Basic Retention Only: No
#Include De-configured Clients Only: No
#Libraries:All
#Media Repository:None
#Location:All
#Storage Policy (Copy):All
#Locale:English
#Use None
```

Summary

```
Total,Active/Ready,Full/Offline,Appendable,Idle/Spare,Read-
Only,Bad,Cleaning,Retired,Foreign,Saved,Undiscovered,Other,
3014,45,1435,971,416,0,41,7,45,0,54,0,0,
```

```
Bar Code,Media Type,Description,Library,Storage Policy [Copy],Media
Group,Retain Data Until,Location,Container,Prevent Export,Exportable
Time,Last Export Time,Side,Status,Last Read,Last Write,Total Data (MB),
000001L3(R),ULTRIUM V3,N/A,DELL TL-2000 : Swords (LT0-5),SP : Archived :
Swords CS0-DB1_Full - 2006 [Weekly Aux Copy (CS0-DB2)],N/A,Infinite,Not
Available,N/A,No,N/A,11/22/2014 12:30:42,1,[Appendable]: F,08/25/2008
02:22:34,12/29/2007 10:16:07,125640,(Details about Full/Appendable media)
JobId : 106244 Date : Wed Mar 05 02:12:50 2008,
000001L5,ULTRIUM Cleaning Tape,N/A,DELL TL-2001 : Swords
(LT0-5),N/A,Cleaning Media,N/A,slot
3,N/A,No,N/A,N/A,1,Cleaning,N/A,03/15/2014 10:42:15,Number of
Used/Left:1/48,
```

## Synchronization



You will need to install the [TapeTrack Sync software](#) to complete these instructions.

Synchronization with TapeTrack is performed by calling the [TMSS10Sync](#) command line program, along with:

1. The Storage Information CSV report.
2. Command line arguments that instruct the program how to process volumes.
3. A synchronization definition file that instructs the program how to interpret the Storage Information CSV output.

### Example Command Line Arguments

```
TMSS10Sync -d default.ttidef -a -S batch:-password@server <
```

```
commvaultreport.csv
```

Where:

- -d is the path to the Synchronization Definition File.
- -a tells the program to add new tape volumes if they are encountered.
- -S tells the program what [Server](#) to connect to.
- commvaultreport.csv is the Commvault output.

## Example Synchronization Definition

```
#
# Set delimiter
SetCSVDelimiter(",");

# Set Customer-ID
SetLiteral(CUSTOMER, "1002");

# Set Media-ID
SetLiteral(MEDIA, "LT0");

# Extract values
Extract(VOLUME, 1, 6, 0);
Extract(DESCRIPTION, 5, 50, 0);
Extract(EXPIRYDATE, 7, 10, 0);
Extract(WRITETIME, 13, 20, 0);
Extract(MOVEDATE, 7, 10, 0);

# Add L5 suffix to barcode value
AddTranslation(VOLUME, "*", "*L5");

# Declare date formats
SetExpiryDateFormat("%m/%d/%Y");
SetMoveDateFormat("%m/%d/%Y");
SetWriteTimeFormat("%m/%d/%Y %H:%M:%S");

# Set start of data
AddString(START, 0, "A1*");

# Exclude any line that starts with a space
AddString(EXCLUSION, 0, " *");

# Set end of data
AddString(END, 0, "Notes:");
```

[cookbook](#)

From:  
<https://rtfm.tapetrack.com/> - **TapeTrack Documentation**

Permanent link:  
<https://rtfm.tapetrack.com/cookbook/commvault>

Last update: **2025/01/21 22:07**

