

Adding Long Barcode To Attribute Automatically

When adding hashed Long Barcodes to TapeTrack, the unhashed Barcode can be automatically added to the Volume's Description or an Extended Attribute to allow a human readable along side the hashed value.

Adding An Extended Attribute For Long Barcode

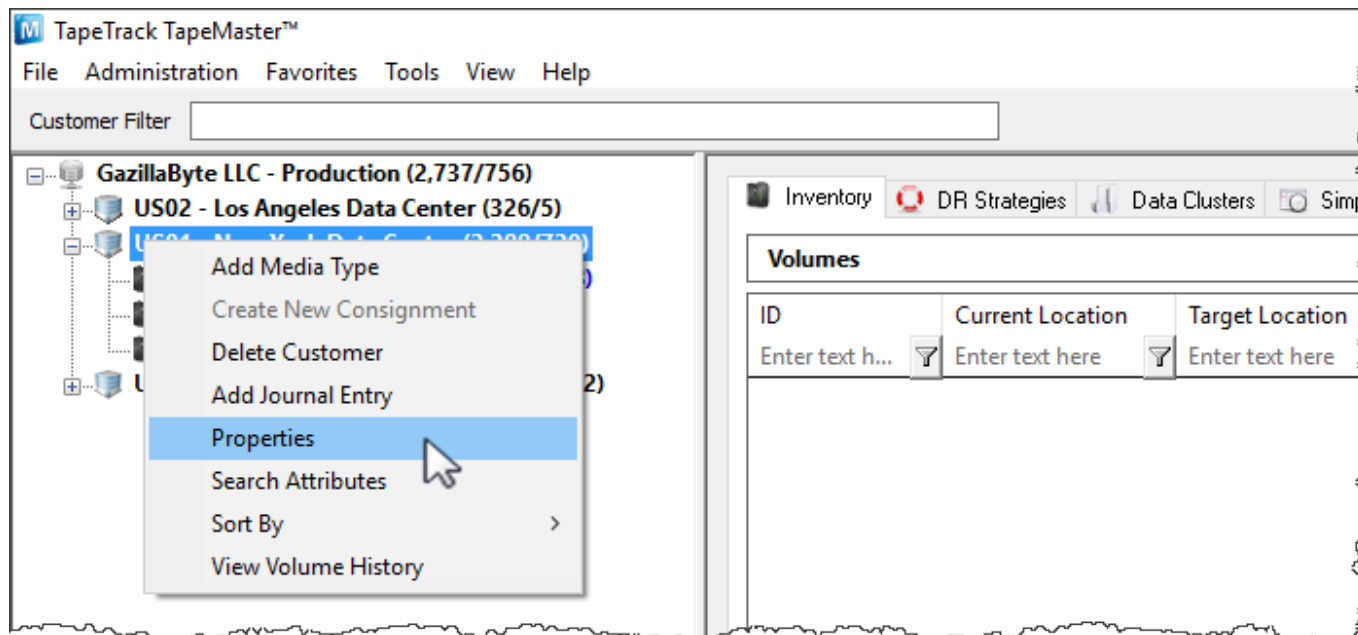
If you are adding the unhashed Barcode to the Volume field Description or you have already added the required Extended Attribute you can skip this section.

Extended Attributes are added at a Customer level and are then available to all Media types that belong to that Customer.

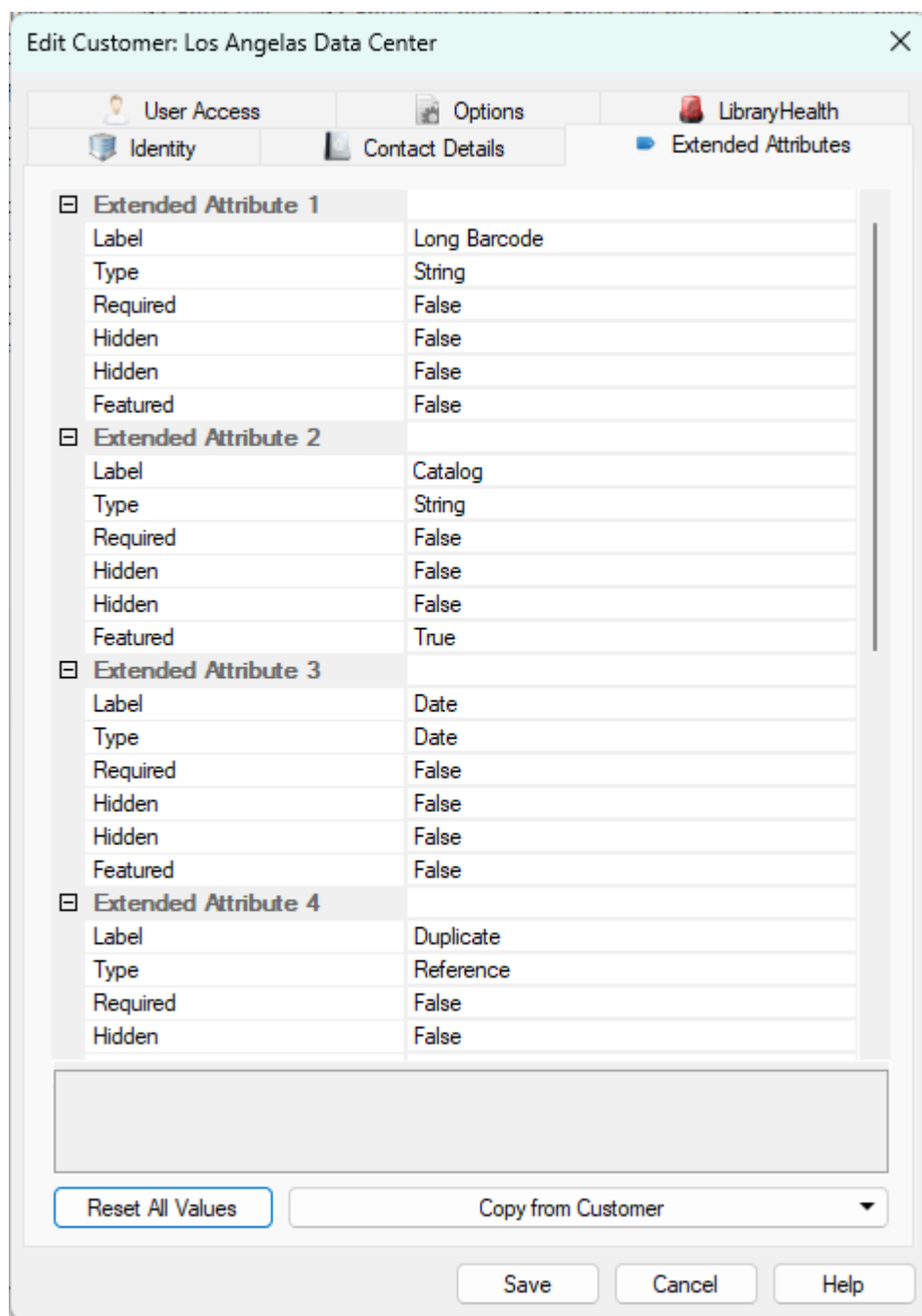
To add an Extended Attribute, right-click the required Customer-ID and select **Properties**.

From the Edit Customer window, select the **Attributes** tab.

Attributes and types are set at a Customer level by right-clicking a Customer in the Customer Tree and selecting **Properties**.



This will launch the Customer Properties Window. Select the **Attributes** tab.

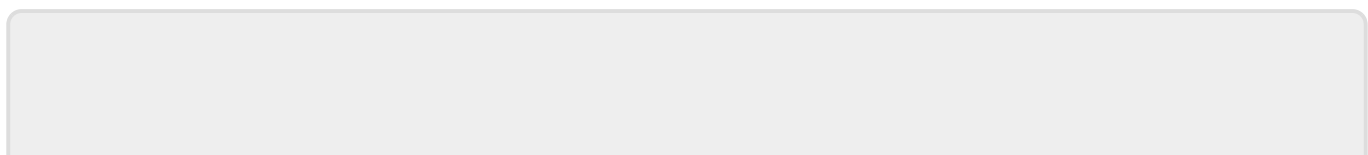


Left-click in the Attribute field next to an Index number to enter an Attribute.

By default, the type will be set to String. Click String to select either String, Integer, or Date from the Type drop-down menu.

Set **Required** to the required value when creating new volumes:

- False equates to optional value.
- True equates to mandatory entry.



From:

<https://rtfm.tapetrack.com/> - **TapeTrack Documentation**

Permanent link:

https://rtfm.tapetrack.com/cookbook/long_barcodes_attribute_auto?rev=1571280189

Last update: **2025/01/21 22:07**

