

Adding Long Barcode Values To Extended Attributes

When adding hashed Long Barcodes to TapeTrack, the unhashed Barcode can be automatically added to the [Volume's](#) Description or an [Extended Attribute](#) to allow a human readable along side the hashed value.

Sample Data

In this example we will use the following [Volume-ID's](#) to scan into [TapeTrack TapeMaster](#)

- VOLUME_1001
- 100010002234
- MONDAY VOLUME 1

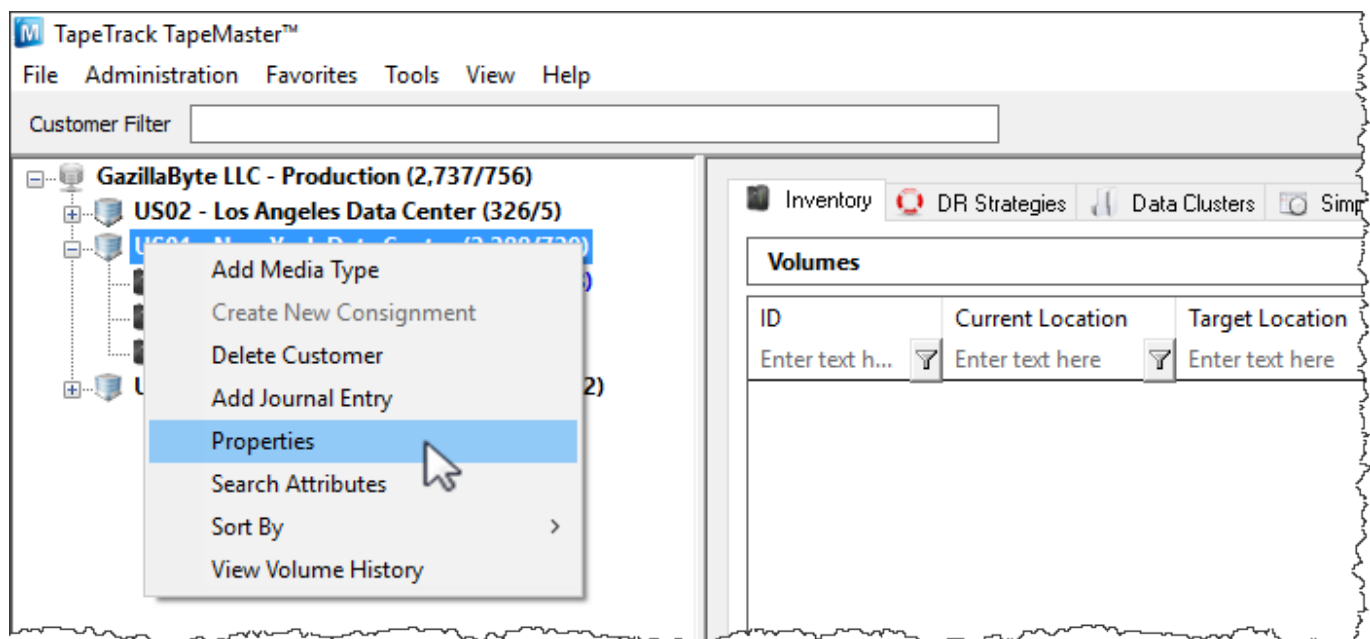
Adding [Extended Attribute](#) Long Barcode

Adding An Extended Attribute For Long Barcode

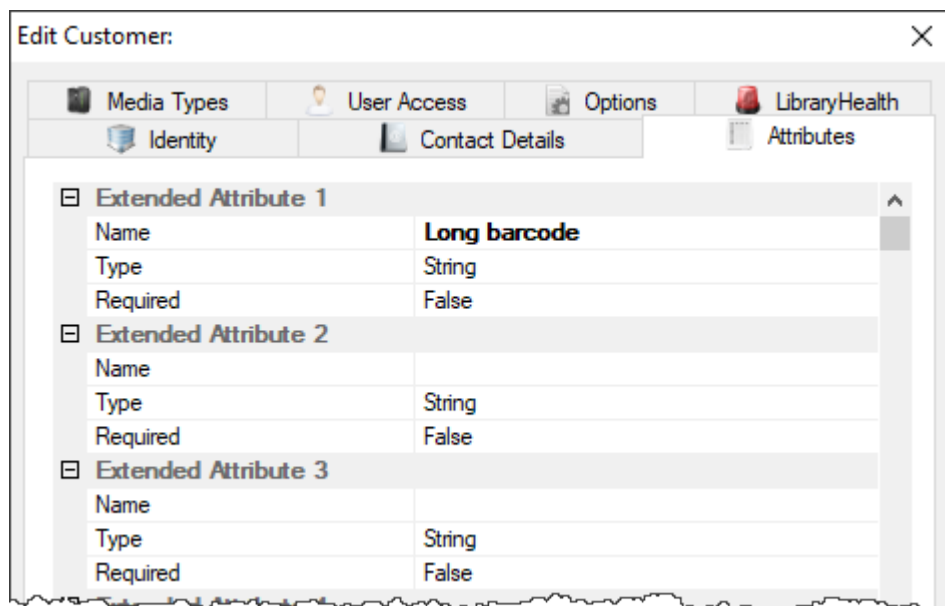
If you are adding the unhashed Barcode to the [Volume](#) field Description or you have already added the required [Extended Attribute](#) you can skip this section.

[Extended Attributes](#) are added at a [Customer](#) level and are then available to all [Media](#) types that belong to that [Customer](#).

To add an [Extended Attribute](#), right-click the required Customer-ID from the Customer Tree and select Properties.



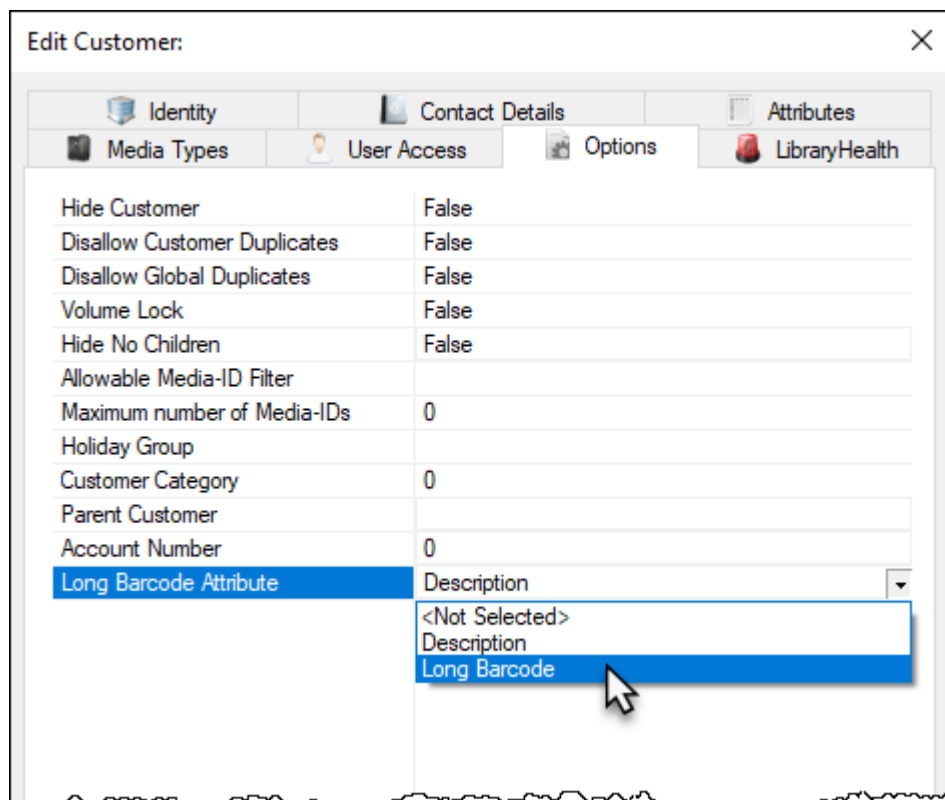
From the Edit **Customer** window, select the **Attributes** tab.



Left-click in the first available blank **Extended Attribute** field Name .

Enter a descriptive name for the **Extended Attribute** (eg. Long Barcode), leaving the Type as String.

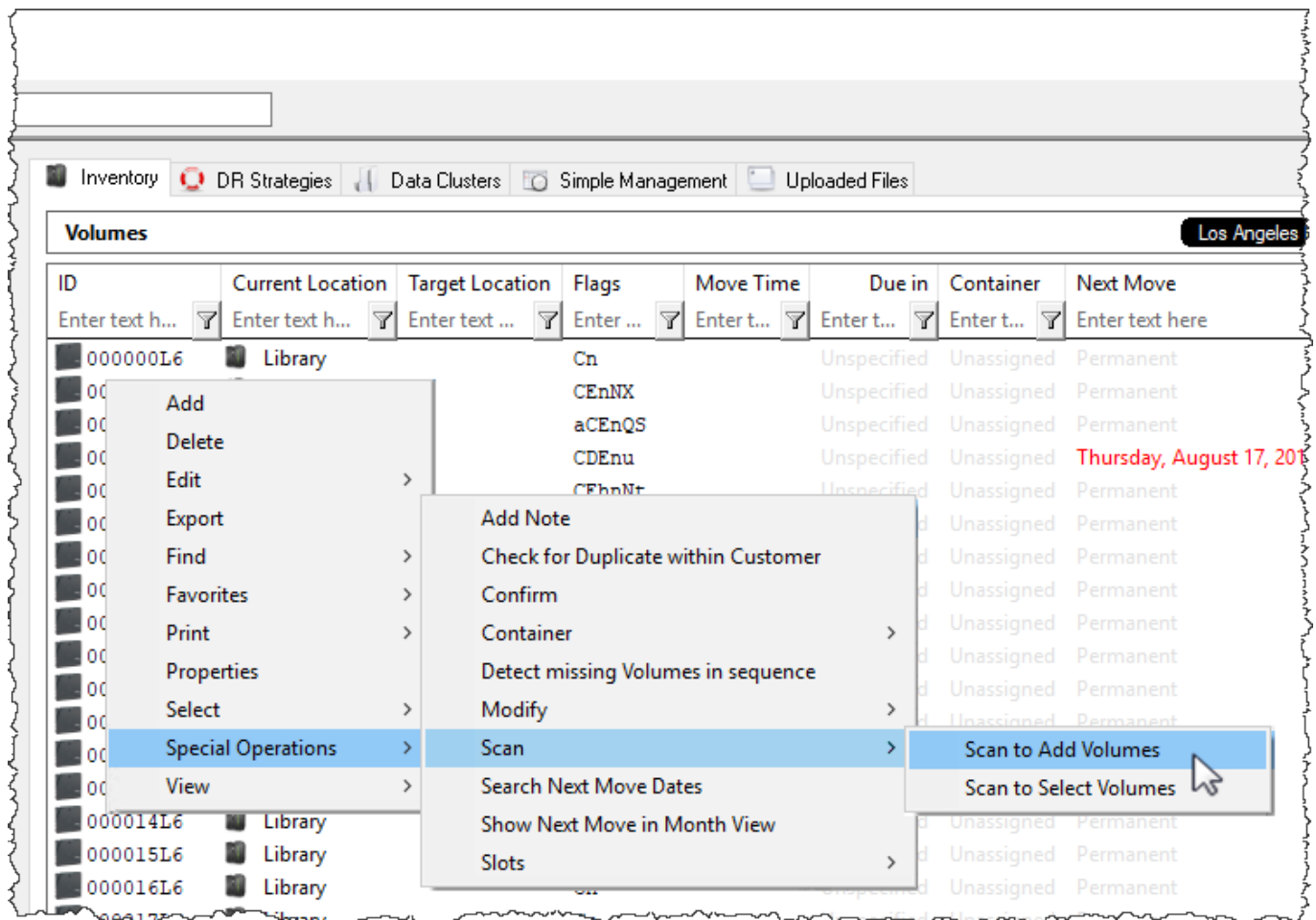
From the Edit **Customer** window, select the **Options** tab. From the Long Barcode Attribute field, select the **Extended Attribute** field you want the un-hashed Long Barcode to be added to (eg. Long barcode).



Click Save.

Scanning Long Barcodes

Scan Long Barcodes, by right-clicking in the [TapeTrack TapeMaster](#) Inventory window and selecting Special Operations → Scan → Scan To Add Volumes

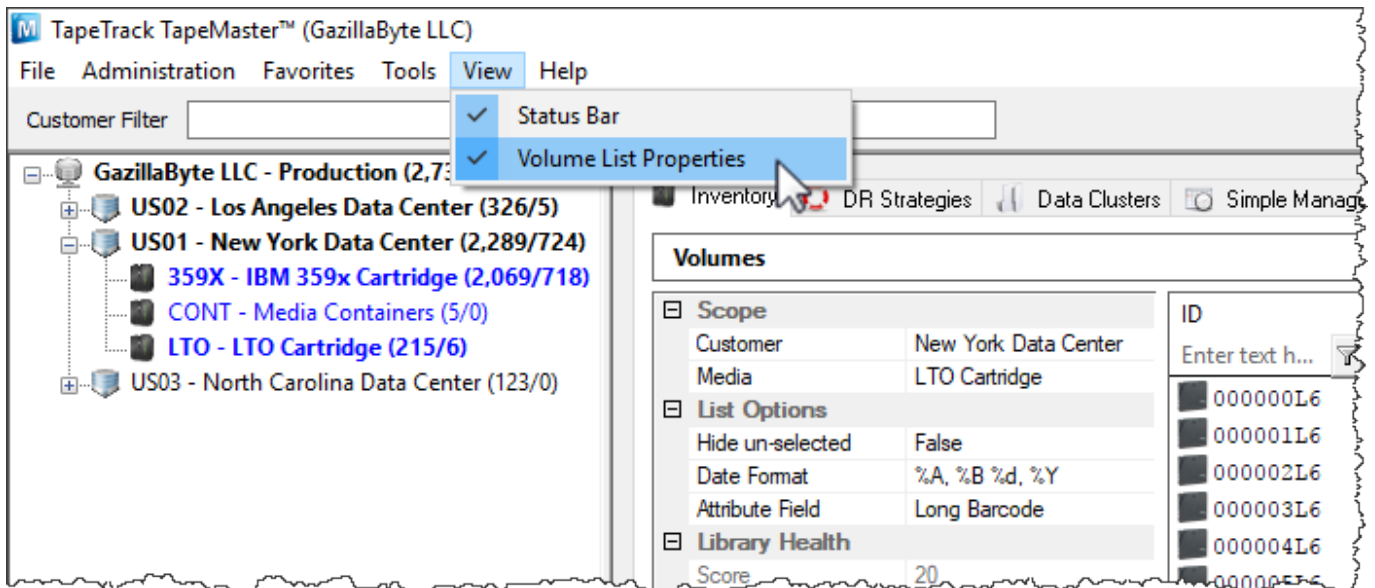


Scan-In the [Volumes](#) using your preferred method.

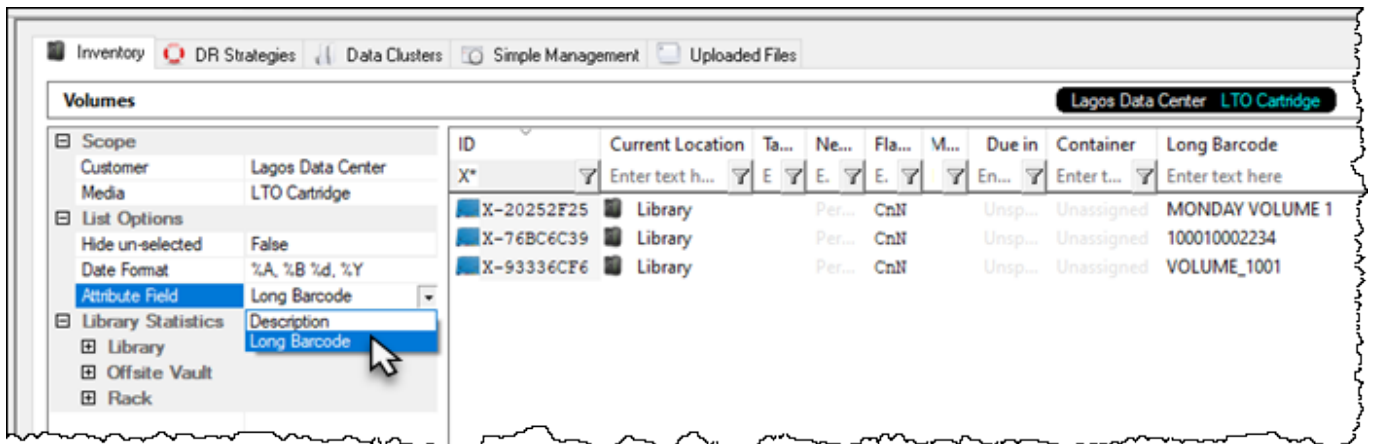
All [Volumes](#) Scanned with Long Barcodes will automatically have the un-hashed barcode value added to the [Extended Attribute](#) selected in the previous steps.

Viewing Long Barcode Values

To view the [Extended Attribute](#) (Long Barcode) in [TapeTrack TapeMaster](#), from the main menu select View → Volume List Properties.



Select from the Attribute Field, under List Options, the required Attribute (Long Barcode). The un-hashed Long Barcode values will now display in the Inventory window.



From: <https://rtfm.tapetrack.com/> - **TapeTrack Documentation**

Permanent link: https://rtfm.tapetrack.com/cookbook/long_barcodes_attribute_auto?rev=1571292396

Last update: 2025/01/21 22:07

