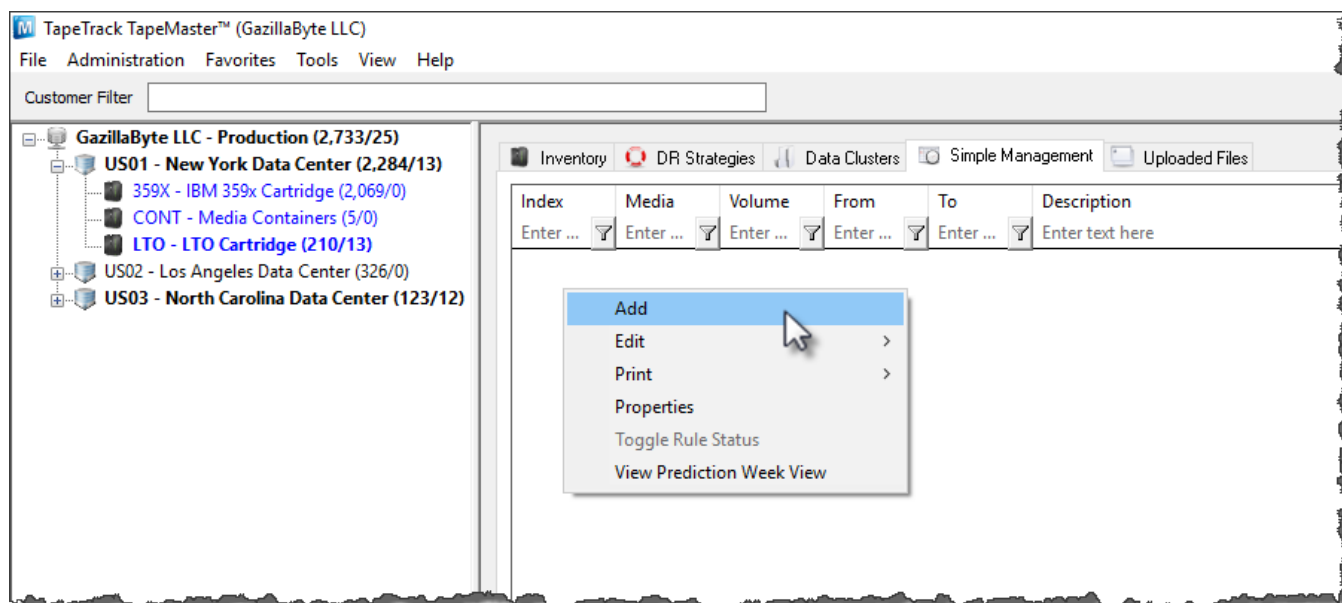


Every 2nd Wednesday of the month

First of all check and confirm that the properties of the required [Repositories](#) have had the Force Simple Management option set to True, and the Next Repository option is set to the [Repository](#) as per the intended rule.

Select the Simple Management tab above the Inventory window to the right of the Customer tree view. Right-click and select Add.



This will open the Edit New Simple Management window and display the Identity tab. On this tab enter an appropriate description into the Description field. In this example 'Return 2nd Wednesday' has been entered.

The screenshot shows a dialog box titled "Edit Simple Management Rule: Return 2nd Wednesday". It has three tabs: "Identity", "Options", and "Calculations". The "Identity" tab is selected and contains the following fields:

- Customer-ID:** A dropdown menu with "JT01" selected and "JT Test Customer 01" as the alternative.
- Index:** A text input field containing the number "1".
- Description:** A text input field containing "Return 2nd Wednesday".

Below these fields is a section titled "Update Statistics" with a plus icon, which is currently collapsed. At the bottom of the dialog are three buttons: "Save", "Cancel", and "Help".

Next select the Options tab, and set the following.

- Expand the Exclusion Days and set to True for Wednesday.
- Set Movement Direction from sending repository (SITE) to receiving repository (OFFS).
- Set Volume Attributes, Media-ID Filter to your required media or container ID, (We have used CTNR in this example).
- Set Volume Attributes, [Volume-ID](#) Filter to *, (The wildcard will select all [Volume-ID's](#)).

The screenshot shows a dialog box titled "Edit Simple Management Rule: Return 2nd Wednesday". It has three tabs: "Identity", "Options", and "Calculations". The "Options" tab is active. The settings are as follows:

Active	True
Restore	False
Scope	
Exclusion Days	
Sunday	False
Monday	False
Tuesday	False
Wednesday	True
Thursday	False
Friday	False
Saturday	False
Movement Direction	
From Repository Filter	SITE
To Repository Filter	OFFS
Volume Attributes	
Media-ID Filter	CTNR
Volume-ID Filter	*
DataCluster	<No Selection>

At the bottom of the dialog box, there are three buttons: "Save", "Cancel", and "Help".

Next select the Calculations tab, and set the following.

- Change Rule Type to Day and/or Month.
- For Rule Options set Days of week to Wednesday.
- For Rule Options set Of to The 2nd week of the month.
- Expand Advanced and under Adjustments set Then adjust to to Previous and Adjustment day to Wednesday.

Edit Simple Management Rule: Return 2nd Wednesday		
Identity	Options	Calculations
Rule type	Day and/or month	
Rule options		
Day of week	Wednesday	
Of	The 2nd week of the month	
Advanced		
Iterations	0	
Adjustments		
Days	0	
Then adjust to	Previous	
Adjustment day	Wednesday	
Skips		
Days		
Holidays	False	
Also skip last	Nothing	
Advanced		
Run Prediction		
Save	Cancel	Help

You can use the **Run Prediction** facility and scroll the date to check the expected results.

Simple Management Prediction ✕

From

June 2017

	Mon	Tue	Wed	Thu	Fri	Sat	Sun
22	29	30	31	1	2	3	4
23	5	6	7	8	9	10	11
24	12	13	14	15	16	17	18
25	19	20	21	22	23	24	25
26	26	27	28	29	30	1	2
27	3	4	5	6	7	8	9

To

October 2017

	Mon	Tue	Wed	Thu	Fri	Sat	Sun
39	25	26	27	28	29	30	1
40	2	3	4	5	6	7	8
41	9	10	11	12	13	14	15
42	16	17	18	19	20	21	22
43	23	24	25	26	27	28	29
44	30	31	1	2	3	4	5

Seq	Date	Days	Offset
0	Wednesday, June 14, 2017	12	
1	Wednesday, July 12, 2017	40	-28
2	Wednesday, August 09, 2017	68	-28
3	Wednesday, September 13, 2017	103	-35

OK

From: <https://rtfm.tapetrack.com/> - **TapeTrack Documentation**

Permanent link: https://rtfm.tapetrack.com/cookbook/simplemanagement/every_second_wednesday

Last update: **2025/01/21 22:07**

