

Simple Management Cookbook

The purpose of this section is to provide practical examples on how to configure Simple Management to automate the scheduled movement of media from one repository to another.

For a detailed description of the Simple Management Subsystem please see the [Simple Management section](#).

Enabling Simple Management

Simple Management can be enabled for a Target Repository, or for a specific Volume.

When enabled at a Repository level, a matching Simple Management Rule must exist with a matching scope for every Volume moved to that Repository.

When enabled for a specific Volume, a Simple Management Rule must exist with a matching scope that for every Repository that the Volume will move to.

Enabling at a Repository level

- Force Simple Management option is set to **True**.
- As Simple Management sets a Next Move Date, and Volumes are traditionally moved using the [TMSS10MovePending](#) program, it is recommended that the Next Repository option is set to an appropriate value.

Edit Repository: Library

Identity

Zones

Slot Usage

Options

Usage History

Movement History

Certification

Type	Library
Scratch Mode	No Change
Scratch Priority	0
Offsite	False
Primary	False
No Distribution	False
Internal	False
Sort Sequence	0
Force Simple Management	True
No Next Repository	False
Allow Deletes	True
Allow Overlaps	False
De-assign from Container	False
Empty Container	False
Do not slot if Container	False
Do not slot	False
Require Tag	False
Require Tag Reset	False
No re-move	False
Disallow backward next move date changes	False
Reset Data Cluster	False
Confirm Container Contents	False
Move Container Contents	False
Late Threshold	0
Highwater Offset	0
Movement Mode	None
Next Repository	Offsite Vault
Enable Slotting	False
Capacity	

Force Simple Management

When a Volume moves to this Repository always run Simple Management

Save

Cancel

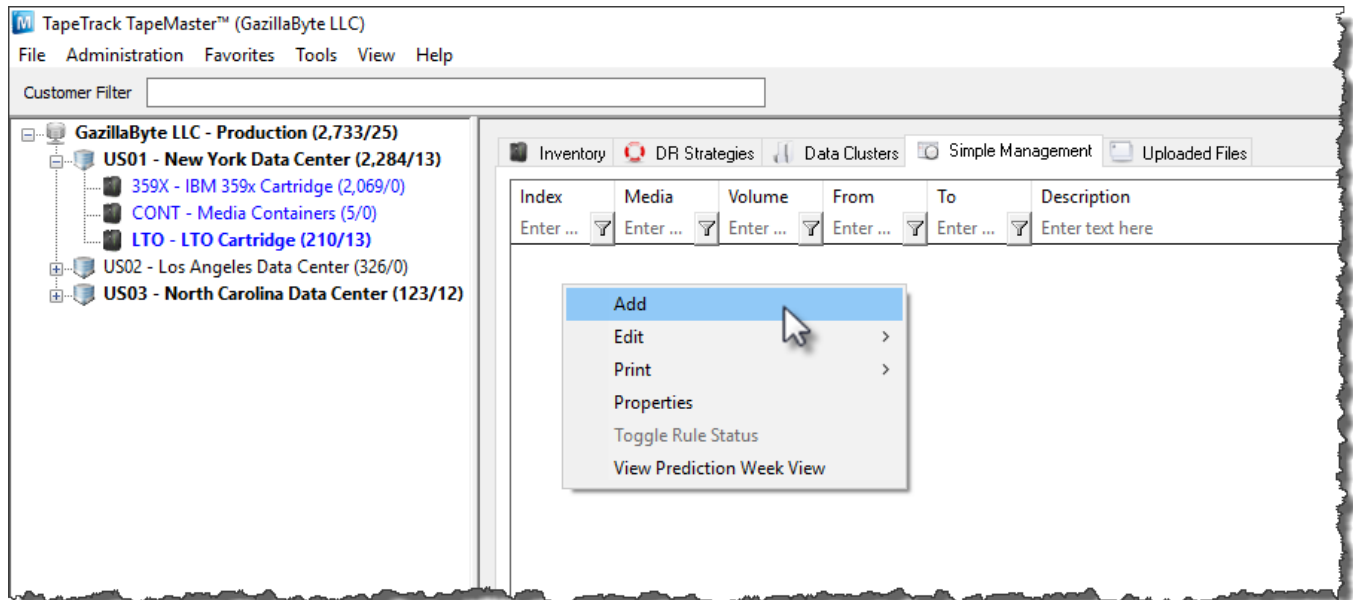
Help

Recipes

Every 2nd Wednesday of the month

First of all check and confirm that the properties of the required repositories have had the Force Simple Management option set to True, and the Next Repository option is set to the repository as per the intended rule.

Select the Simple Management tab above the Inventory window to the right of the Customer tree view. Click with the right hand mouse button and select Add.



This will open the Edit New Simple Management window and display the Identity tab. On this tab enter an appropriate description into the Description field. In this example 'Return 2nd Wednesday' has been entered.

Edit Simple Management Rule: Return 2nd Wednesday

Identity Options Calculations

Index/Description

Customer-ID JT01 JT Test Customer 01

Index 1

Description Return 2nd Wednesday

Update Statistics

Save Cancel Help

Next select the Options tab, and set the following.

- Expand the Exclusion Days and set to True for Wednesday.
- Set Movement Direction from sending repository (SITE) to receiving repository (OFFS).
- Set Volume Attributes, Media-ID Filter to your required media or container ID, (We have used CTNR in this example).
- Set Volume Attributes, Volume-ID Filter to *, (The wildcard will select all volume-ID's).

Dialog box: Edit Simple Management Rule: Return 2nd Wednesday

Tabs: Identity (selected), Options, Calculations

Active: True
Restore: False

Scope

Exclusion Days

Sunday	False
Monday	False
Tuesday	False
Wednesday	True
Thursday	False
Friday	False
Saturday	False

Movement Direction

From Repository Filter	SITE
To Repository Filter	OFFS

Volume Attributes

Media-ID Filter	CTNR
Volume-ID Filter	*
DataCluster	<No Selection>

Buttons: Save, Cancel, Help

Next select the Calculations tab, and set the following.

- Change Rule Type to Day and/or Month.
- For Rule Options set Days of week to Wednesday.
- For Rule Options set Of to The 2nd week of the month.
- Expand Advanced and under Adjustments set Then adjust to to Previous and Adjustment day to Wednesday.

Edit Simple Management Rule: Return 2nd Wednesday

Identity

Options

Calculations

Rule type

Day and/or month

Rule options

Day of week

Wednesday

Of

The 2nd week of the month

Advanced

Iterations

0

Adjustments

Days

0

Then adjust to

Previous

Adjustment day

Wednesday

Skips

Days

Holidays

False

Also skip last

Nothing

Advanced

Run Prediction

Save

Cancel

Help

You can use the **Run Prediction** facility and scroll the date to check the expected results.

<https://rtfm.tapetrack.com/>

Printed on 2026/02/04 05:17

Simple Management Prediction

From

June 2017

	Mon	Tue	Wed	Thu	Fri	Sat	Sun
22	29	30	31	1	2	3	4
23	5	6	7	8	9	10	11
24	12	13	14	15	16	17	18
25	19	20	21	22	23	24	25
26	26	27	28	29	30	1	2
27	3	4	5	6	7	8	9

To

October 2017

	Mon	Tue	Wed	Thu	Fri	Sat	Sun
39	25	26	27	28	29	30	1
40	2	3	4	5	6	7	8
41	9	10	11	12	13	14	15
42	16	17	18	19	20	21	22
43	23	24	25	26	27	28	29
44	30	31	1	2	3	4	5

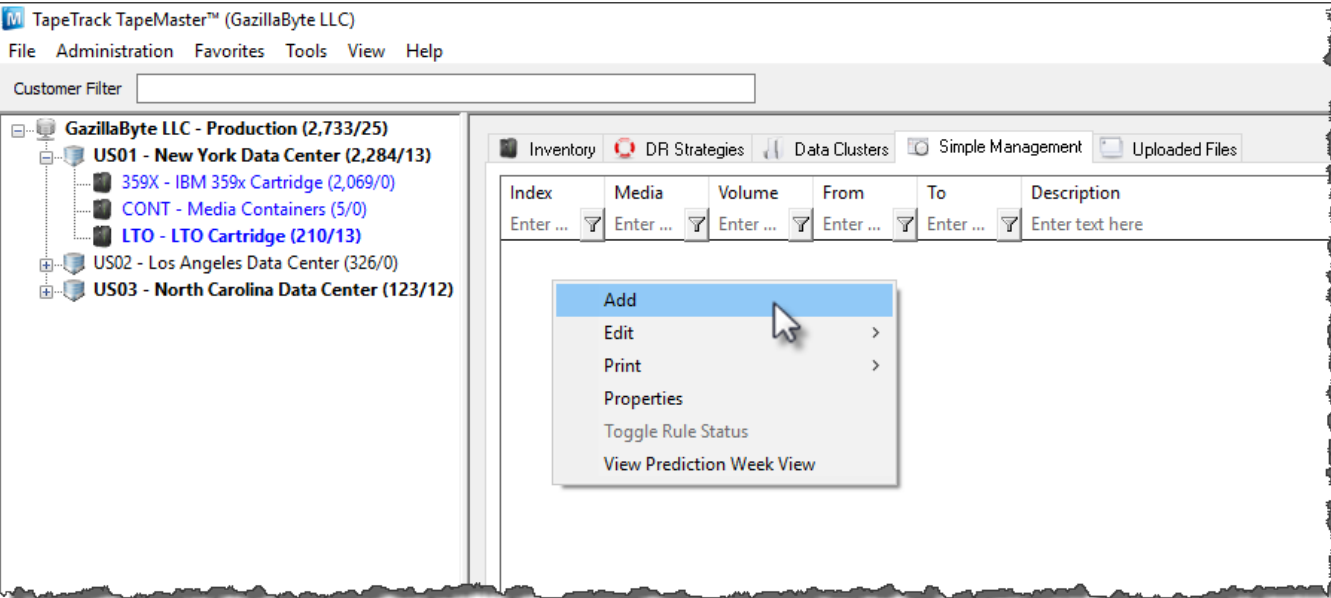
Seq	Date	Days	Offset
0	Wednesday, June 14, 2017	12	
1	Wednesday, July 12, 2017	40	-28
2	Wednesday, August 09, 2017	68	-28
3	Wednesday, September 13, 2017	103	-35

OK

The 2nd last day of each month

First of all check and confirm that the properties of the required repositories have had the Force Simple Management option set to True, and the Next Repository option is set to the repository as per the intended rule.

Select the Simple Management tab above the Inventory window to the right of the Customer tree view. Click with the right hand mouse button and select Add.



This will open the Edit New Simple Management window and display the Identity tab. On this tab enter an appropriate description into the Description field. In this example 'Return 2nd Last Day' has been entered.

Edit New Simple Management Rule

Identity

Options

Calculations

Index/Description

Customer-ID

JT01

JT Test Customer 01

Index

0

Description

Return 2nd Last Day

Save

Cancel

Help

From:
<https://rtfm.tapetrack.com/> - **TapeTrack Documentation**

Permanent link:
<https://rtfm.tapetrack.com/cookbook/simplemanagement?rev=1496936935>

Last update: **2025/01/21 22:07**

