

Simple Management Cookbook

The purpose of this section is to provide practical examples on how to configure Simple Management to automate the scheduled movement of media from one repository to another.

For a detailed description of the Simple Management Subsystem please see the [Simple Management section](#).

Enabling Simple Management

Simple Management can be enabled for a [Target Repository](#), or for a specific [Volume](#).

When enabled at a [Repository](#) level, a matching Simple Management Rule must exist with a matching scope for every [Volume](#) moved to that [Repository](#).

When enabled for a specific [Volume](#), a Simple Management Rule must exist with a matching scope that for every [Repository](#) that the [Volume](#) will move to.

Enabling at a Repository level

- Force Simple Management option is set to True.
- As Simple Management sets a Next Move Date, and [Volumes](#) are traditionally moved using the [TMSS10MovePending](#) program, it is recommended that the Next Repository option is set to an appropriate value.

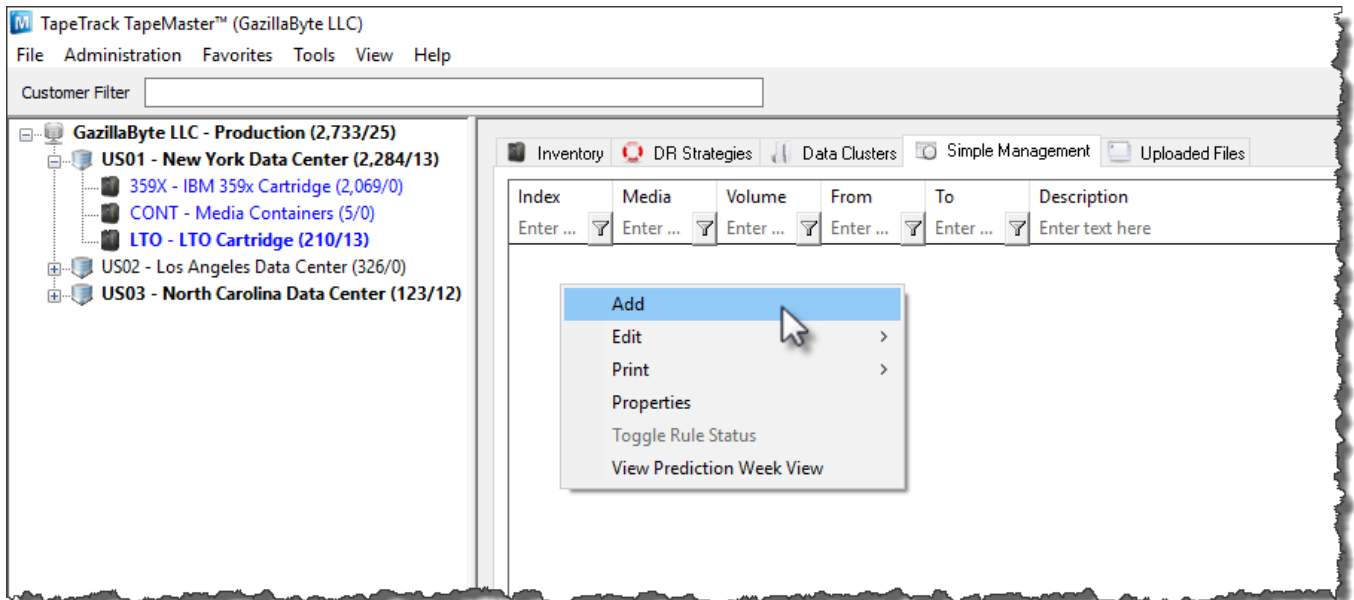


Recipes

Every 2nd Wednesday of the month

First of all check and confirm that the properties of the required [Repositories](#) have had the Force Simple Management option set to True, and the Next Repository option is set to the [Repository](#) as per the intended rule.

Select the Simple Management tab above the Inventory window to the right of the Customer tree view. Right-click and select Add.



This will open the Edit New Simple Management window and display the Identity tab. On this tab enter an appropriate description into the Description field. In this example 'Return 2nd Wednesday' has been entered.



Next select the Options tab, and set the following.

- Expand the Exclusion Days and set to True for Wednesday.
- Set Movement Direction from sending repository (SITE) to receiving repository (OFFS).
- Set Volume Attributes, Media-ID Filter to your required media or container ID, (We have used CTNR in this example).
- Set Volume Attributes, [Volume-ID](#) Filter to *, (The wildcard will select all [Volume-ID's](#)).

Property	Value
Active	True
Restore	False
Scope	
Exclusion Days	
Sunday	False
Monday	False
Tuesday	False
Wednesday	True
Thursday	False
Friday	False
Saturday	False
Movement Direction	
From Repository Filter	SITE
To Repository Filter	OFFS
Volume Attributes	
Media-ID Filter	CTNR
Volume-ID Filter	*
DataCluster	<No Selection>

Next select the Calculations tab, and set the following.

- Change Rule Type to Day and/or Month.
- For Rule Options set Days of week to Wednesday.
- For Rule Options set Of to The 2nd week of the month.
- Expand Advanced and under Adjustments set Then adjust to to Previous and Adjustment day to Wednesday.

Rule type	
Day and/or month	

Rule options	
Day of week	Wednesday
Of	The 2nd week of the month

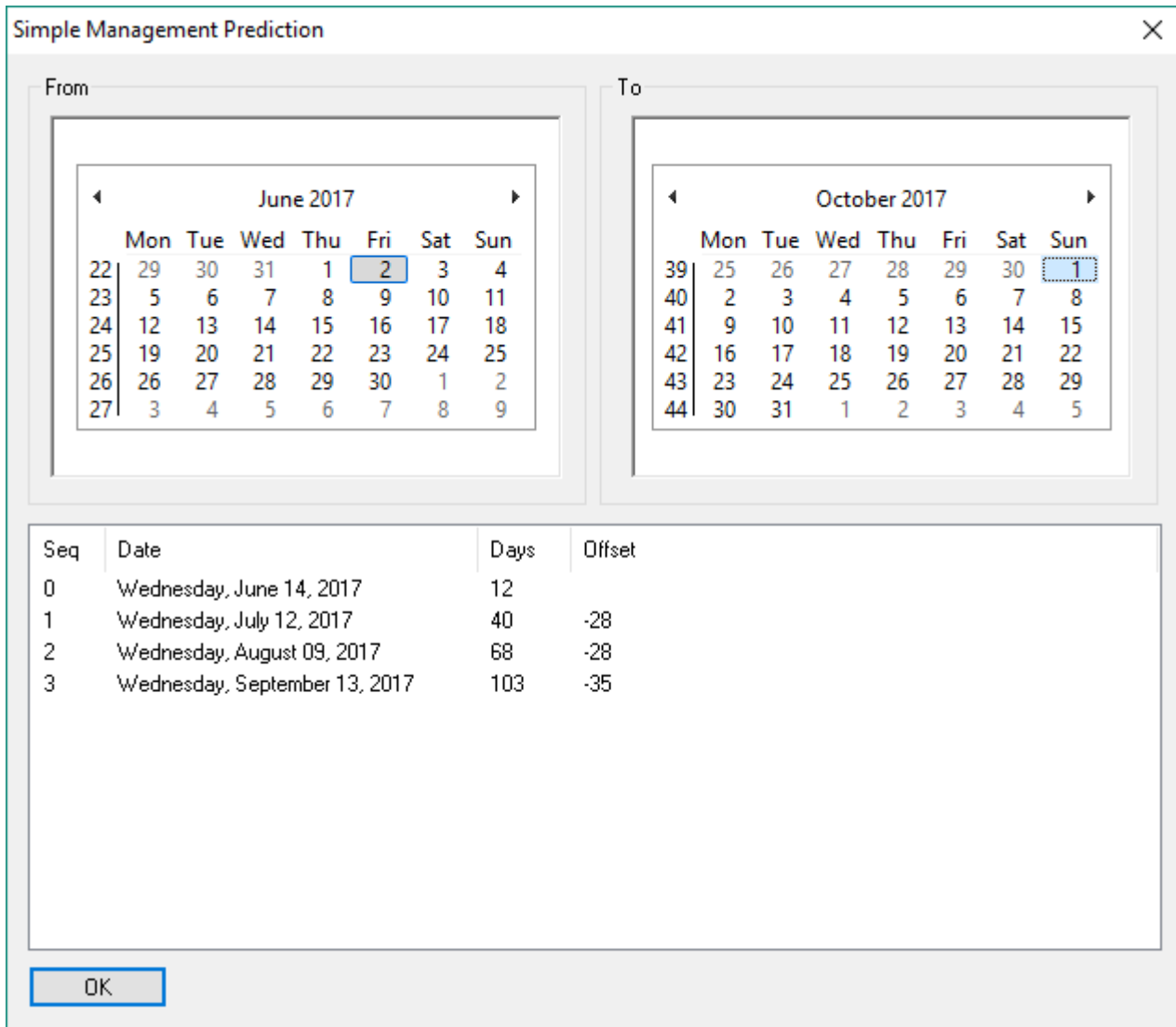
Advanced	
Iterations	0
Adjustments	
Days	0
Then adjust to	Previous
Adjustment day	Wednesday
Skips	
Days	
Holidays	False
Also skip last	Nothing

Advanced

Run Prediction

Save Cancel Help

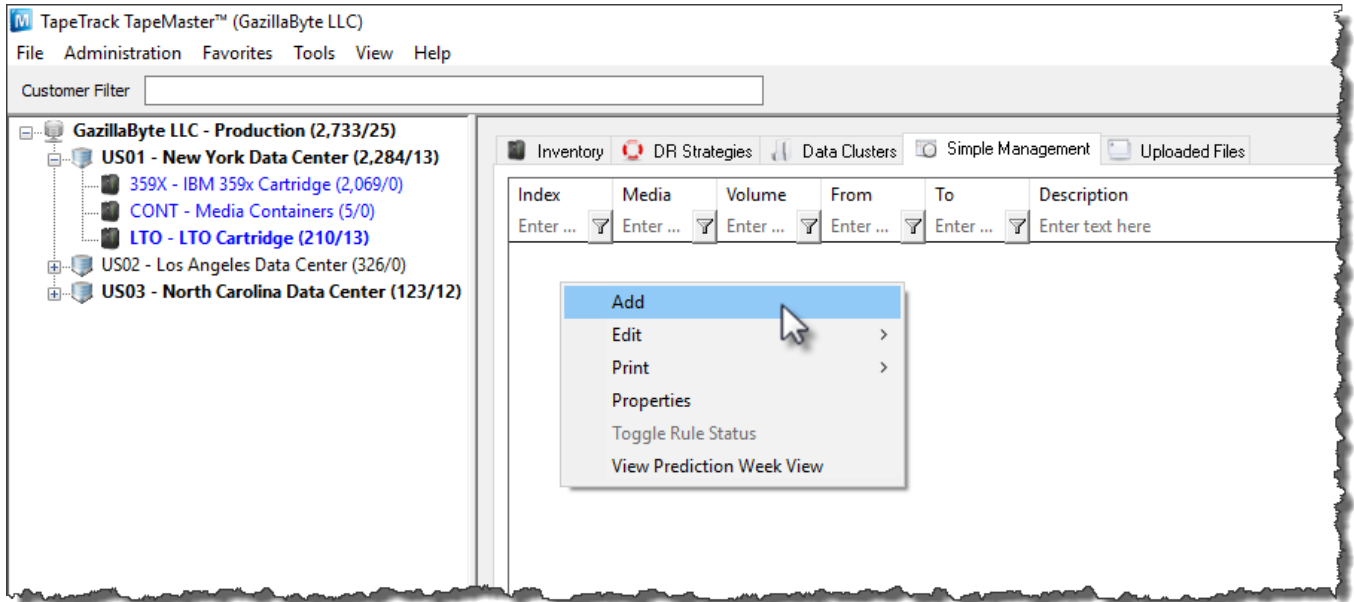
You can use the **Run Prediction** facility and scroll the date to check the expected results.



The 2nd last day of each month

First of all check and confirm that the properties of the required repositories have had the Force Simple Management option set to True, and the Next Repository option is set to the repository as per the intended rule.

Select the Simple Management tab above the Inventory window to the right of the Customer tree view. Right-click and select Add.



This will open the Edit New Simple Management Rule window and display the Identity tab. On this tab enter an appropriate description into the Description field. In this example 'Return 2nd Last Day' has been entered.

Edit New Simple Management Rule [X]

Identity Options Calculations

Index/Description

Customer-ID JT01 JT Test Customer 01

Index 0

Description Return 2nd Last Day

Save Cancel Help

cookbook

From:
<https://rtfm.tapetrack.com/> - **TapeTrack Documentation**

Permanent link:
<https://rtfm.tapetrack.com/cookbook/simplemanagement?rev=1576111928>

Last update: **2025/01/21 22:07**

