

Simple Management Cookbook

The purpose of this section is to provide practical examples on how to configure Simple Management to automate the scheduled movement of media from one repository to another.

For a detailed description of the Simple Management Subsystem please see the [Simple Management section](#).

Enabling Simple Management

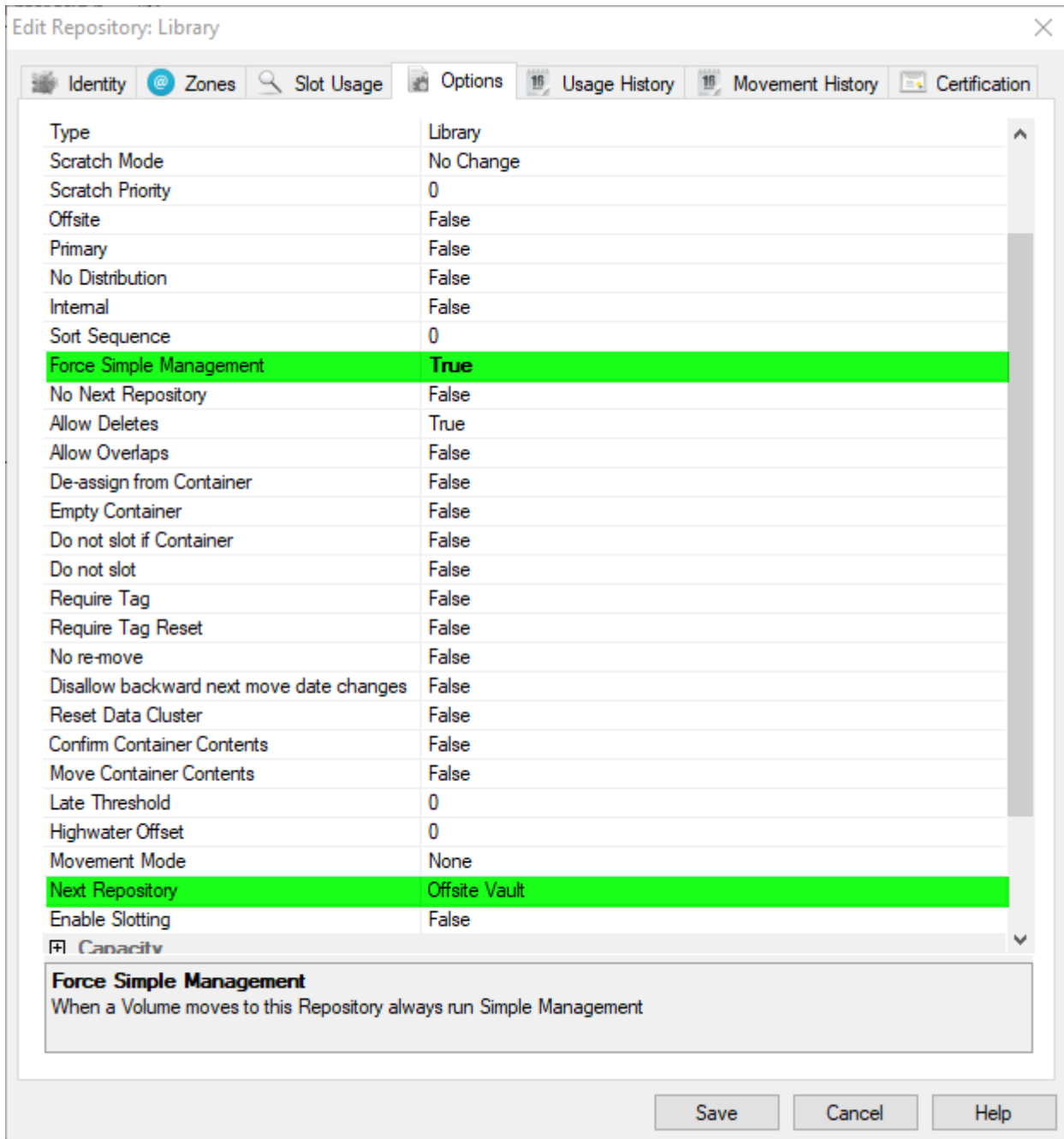
Simple Management can be enabled for a [Target Repository](#), or for a specific [Volume](#).

When enabled at a [Repository](#) level, a matching Simple Management Rule must exist with a matching scope for every [Volume](#) moved to that [Repository](#).

When enabled for a specific [Volume](#), a Simple Management Rule must exist with a matching scope that for every [Repository](#) that the [Volume](#) will move to.

Enabling at a Repository level

- Force Simple Management option is set to True.
- As Simple Management sets a Next Move Date, and [Volumes](#) are traditionally moved using the [TMSS10MovePending](#) program, it is recommended that the Next Repository option is set to an appropriate value.



Recipes

[Restore or Maintain Next Move Date](#)

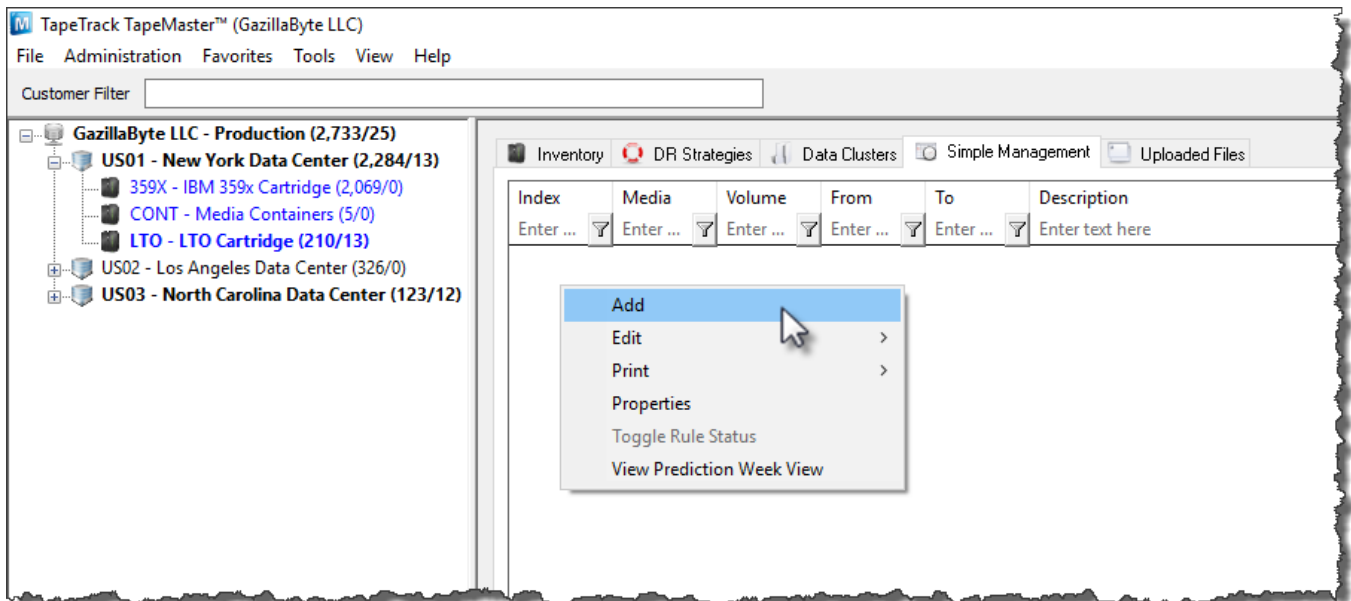
[Every 2nd Wednesday Of The Month](#)

[2nd last day of each month](#)

The 2nd last day of each month

First of all check and confirm that the properties of the required repositories have had the Force Simple Management option set to True, and the Next Repository option is set to the repository as per the intended rule.

Select the Simple Management tab above the Inventory window to the right of the Customer tree view. Right-click and select Add.



This will open the Edit New Simple Management Rule window and display the Identity tab. On this tab enter an appropriate description into the Description field. In this example 'Return 2nd Last Day' has been entered.

Edit New Simple Management Rule

Identity Options Calculations

Index/Description

Customer-ID **JT01** JT Test Customer 01

Index 0

Description Return 2nd Last Day

Save Cancel Help

[cookbook](#)

From:
<https://rtfm.tapetrack.com/> - **TapeTrack Documentation**

Permanent link:
<https://rtfm.tapetrack.com/cookbook/simplemanagement?rev=1618195035>

Last update: **2025/01/21 22:07**

