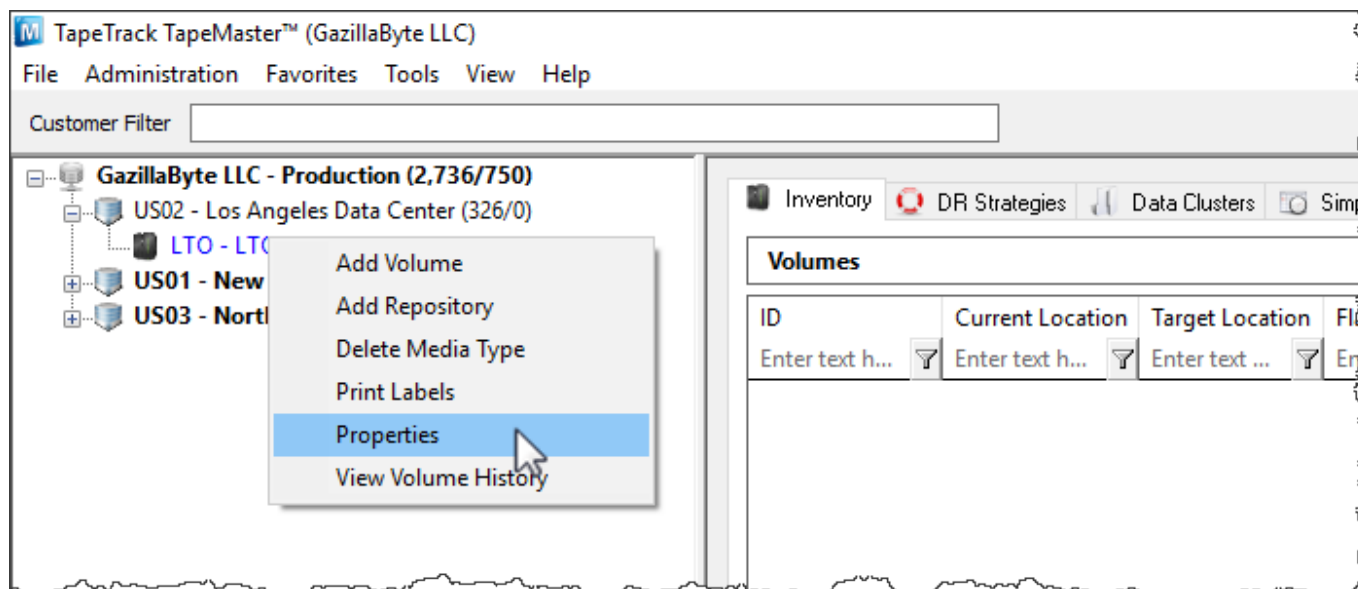


# Volume Serial Building Tool

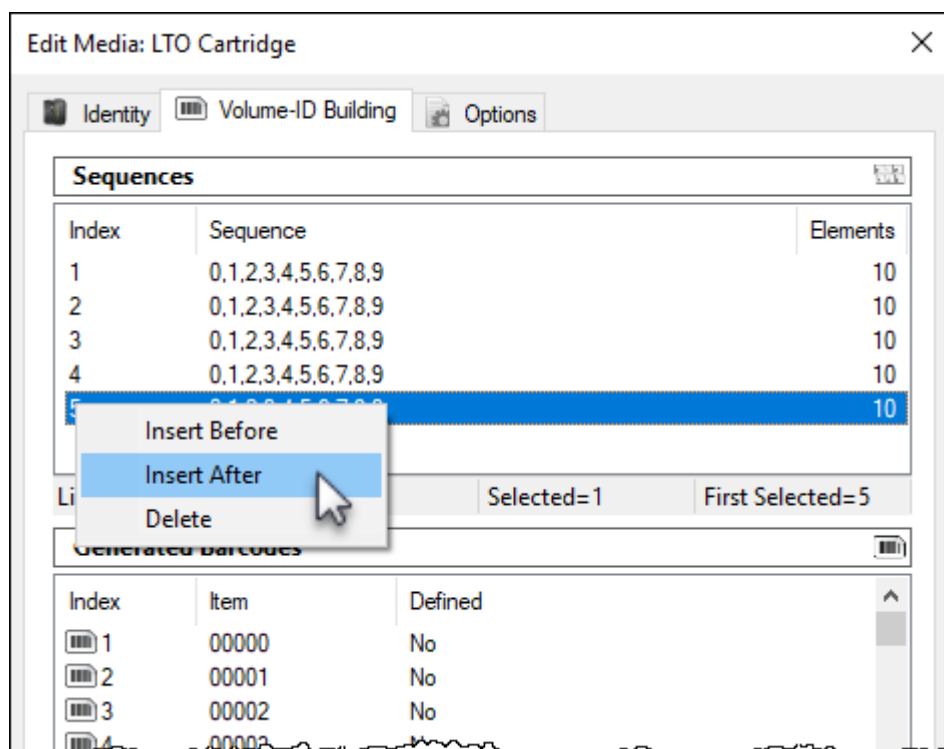
Utilize the Volume Serial Building tool located in the Media Type Properties Window.

## Volume Serial Building Process

Right-click the media type that you want to add volumes to and select Properties.

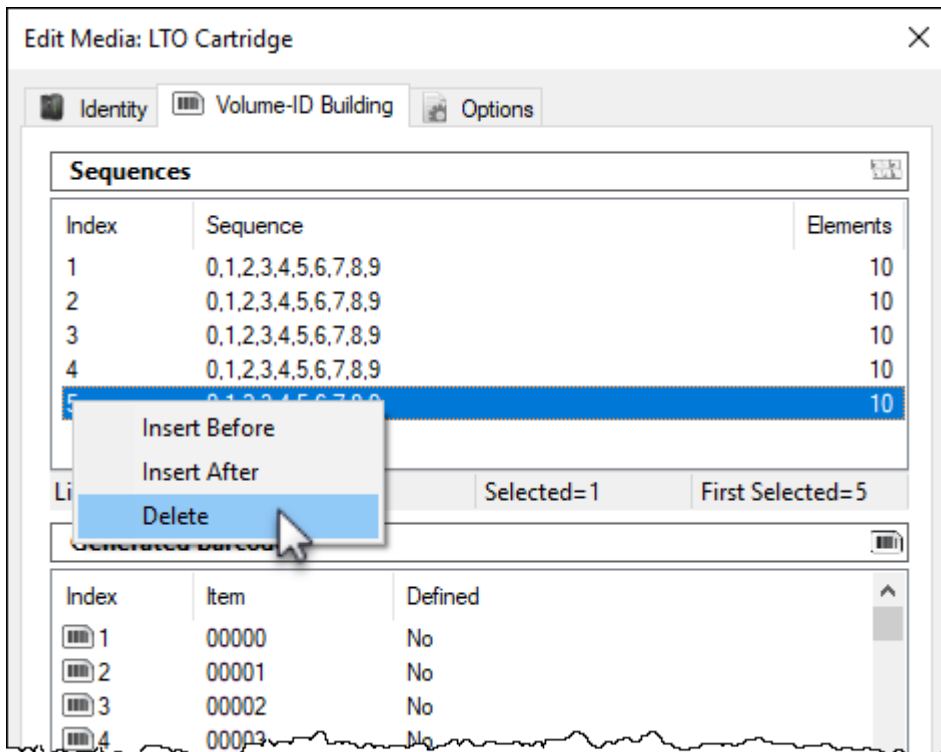


In the Edit Media Window click the Volume-ID Building tab. Press the **insert** key or right-click in the upper window and select **Before** or **After** depending on where you need the next range inserted.



Any unwanted or unneeded ranges can be removed by right clicking the required index and selecting

Delete.



Repeat this process until you have enough ranges to create the barcodes you require. The ranges can be edited to encompass a range of numbers, letters or characters, or they can be set to one value.

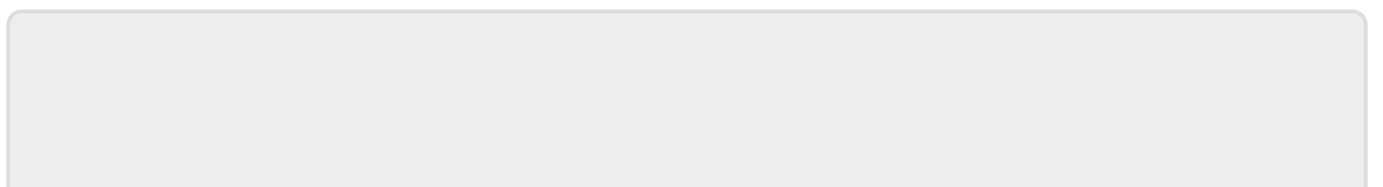
Once you have built the required volume ID's, select the range required in the lower window. Right-click the highlighted range and select Add to add the volumes to the default repository or Add To and select the required repository.



## Alternative Methods For Adding Volumes

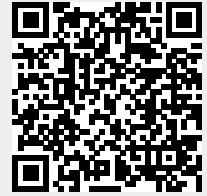
Adding Volumes via

- [Excel Import Tool](#)
- [copy and paste](#)
- [Scan To Add](#)



From:  
<https://rtfm.tapetrack.com/> - **TapeTrack Documentation**

Permanent link:  
[https://rtfm.tapetrack.com/cookbook/volume\\_id\\_building?rev=1520995597](https://rtfm.tapetrack.com/cookbook/volume_id_building?rev=1520995597)



Last update: **2025/01/21 22:07**