

Volume Serial Building Tool

Utilize the Volume Serial Building tool to efficiently add large quantities of sequential volume ID's to selected media types.

Volume Serial Building Process

Right-click the media type that you want to add volumes to and select Properties.



Building The Volume ID Sequence

In the **Edit Media** Window click the Volume-ID Building tab. Press the **insert** key or right-click in the upper window and select **Before** or **After** depending on where you need the next range inserted.



Any unwanted or unneeded ranges can be removed by right clicking the required index and selecting Delete.



Repeat this process until you have enough ranges to create the barcodes you require. The ranges can be edited to encompass a range of numbers, letters or characters, or they can be set to a single value, such as making the last index **L5** to have all serials end in that value.

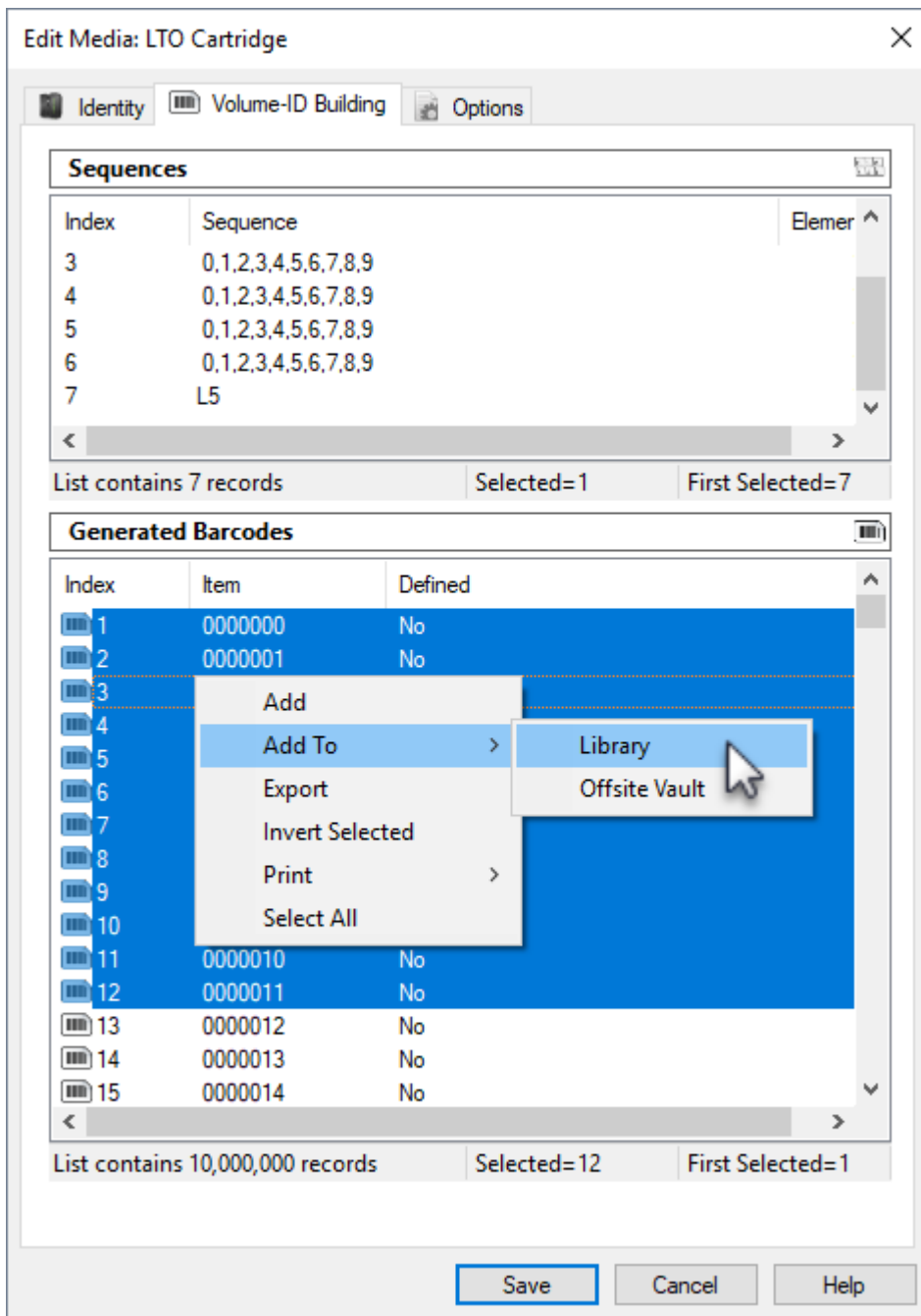
Add Volume ID's

The lower window displays the constructed index, the series of volume ID's and whether the ID is

defined (already exists in the media type).

Select the range required in the lower window, ensuring selecting just the undefined ID's.

Right-click the highlighted range and select Add to add the volumes to your default repository or Add To and select the required repository.



Alternative Methods

Alternative methods for adding Volumes ID's:

- [Excel Import Tool](#)
- [Copy and paste](#)
- [Scan To Add](#)

Cookbook menu

From:

<https://rtfm.tapetrack.com/> - **TapeTrack Documentation**

Permanent link:

https://rtfm.tapetrack.com/cookbook/volume_id_building?rev=1538356858

Last update: **2025/01/21 22:07**

