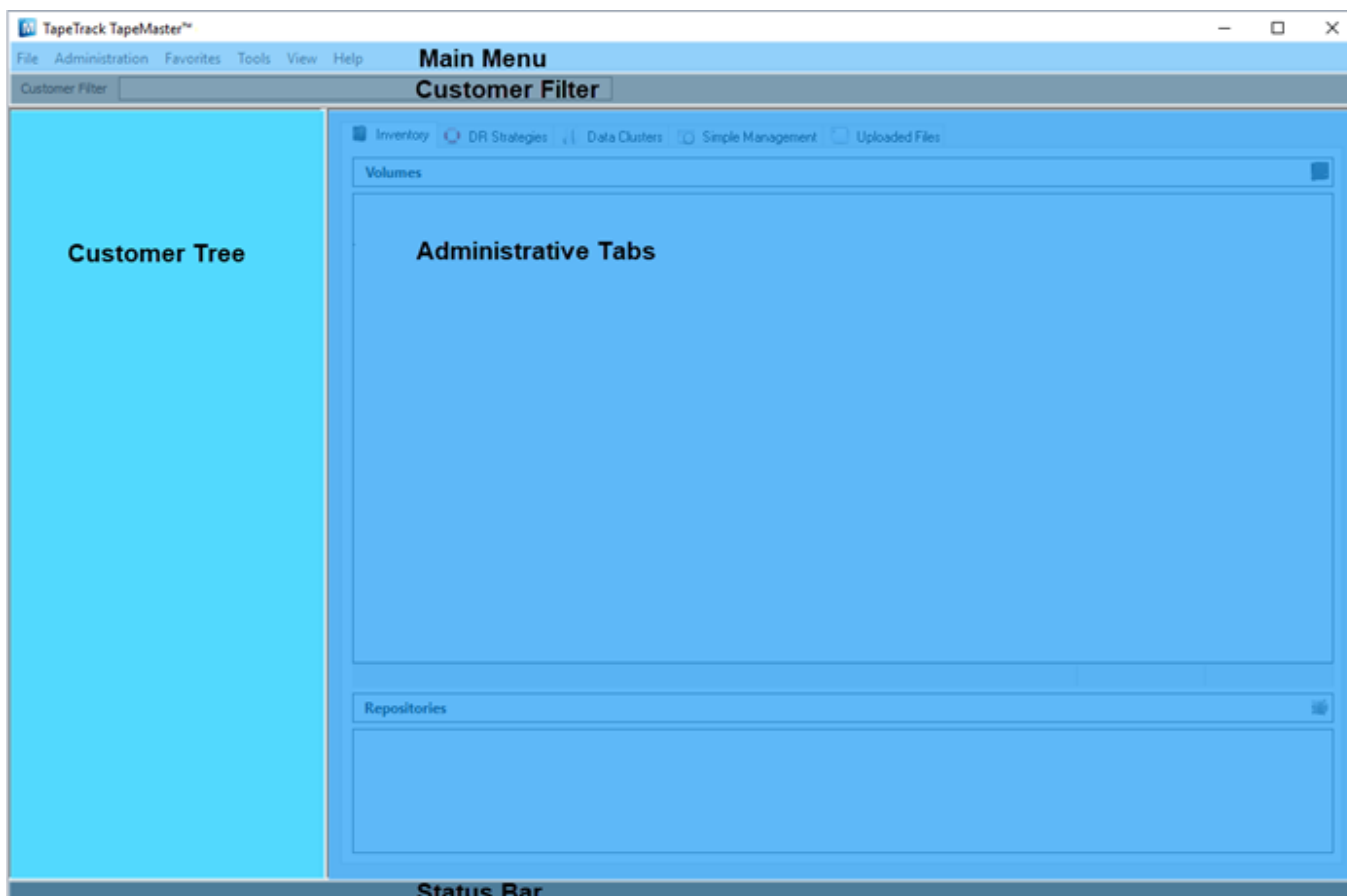


TapeMaster GUI

The TapeMaster GUI is divided into five main zones, main menu, customer filter, customer tree, inventory and associated tabs and status bar.



Main Menu

The [Main Menu](#) provides access to essential functions in TapeTrack including server connections, volume management, reporting and users.

Customer Filter

The [Customer filter](#) allows you to filter the customer list to display only customers whose Customer ID's meet the filter criteria.

Customers can also be searched by customer description by using the [Find Customer](#) function

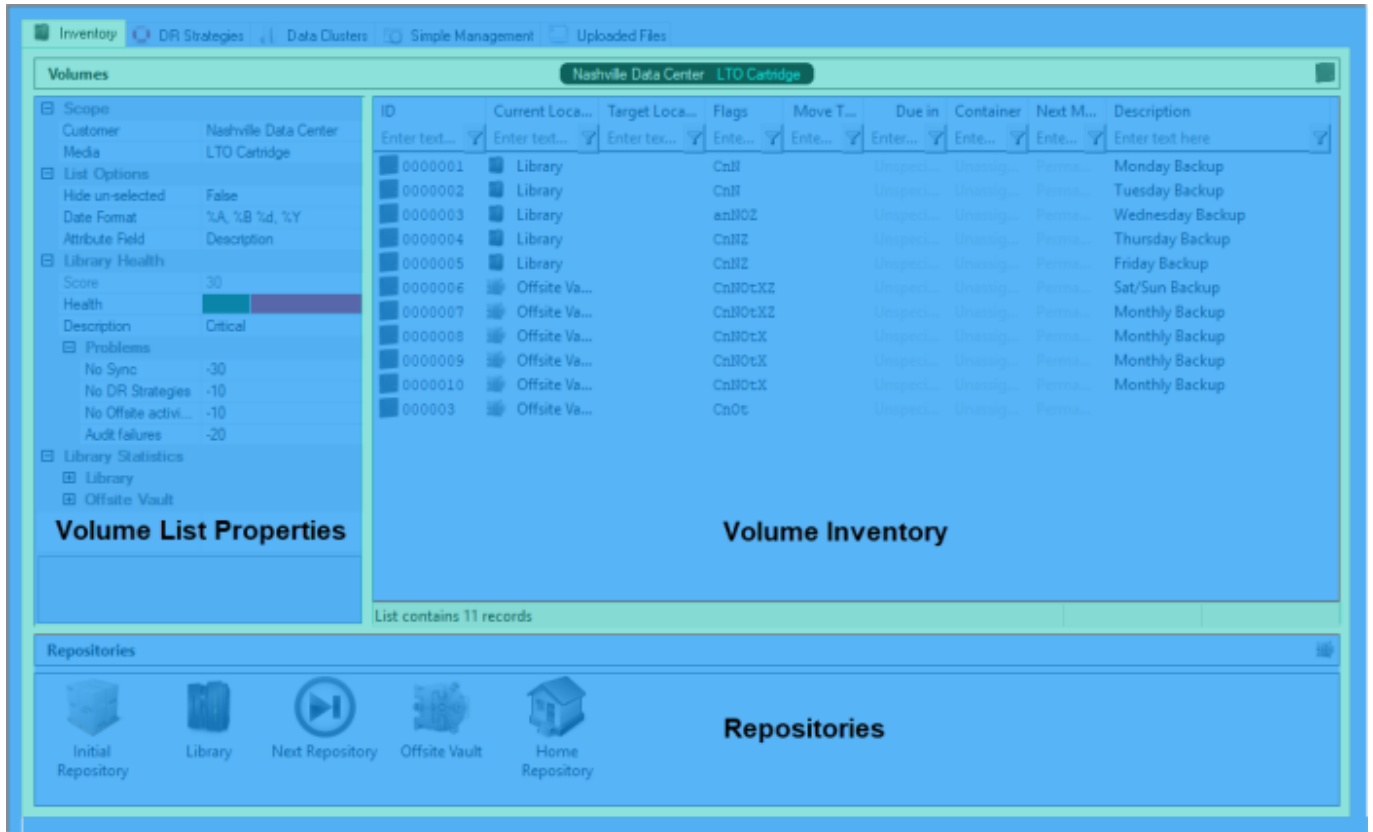
Customer Tree

The [Customer Tree](#) provides a summary of and navigation to all of the Customers, [Media Types](#), and

Volumes on the selected Server.

These Objects appear in a hierarchy of [Server Node](#), [Customer Nodes](#) and [Media Nodes](#).

Administrative Tabs



Status Bar

The **Status Bar** displays information about the [Framework Server](#) currently connected to, the current status of your [TapeTrack Server license](#) and a clickable link to access [Free TapeTrack Support](#)

From: <https://rtfm.tapetrack.com/> - **TapeTrack Documentation**

Permanent link: <https://rtfm.tapetrack.com/daytoday/gui?rev=1519787041>

Last update: **2025/01/21 22:07**

