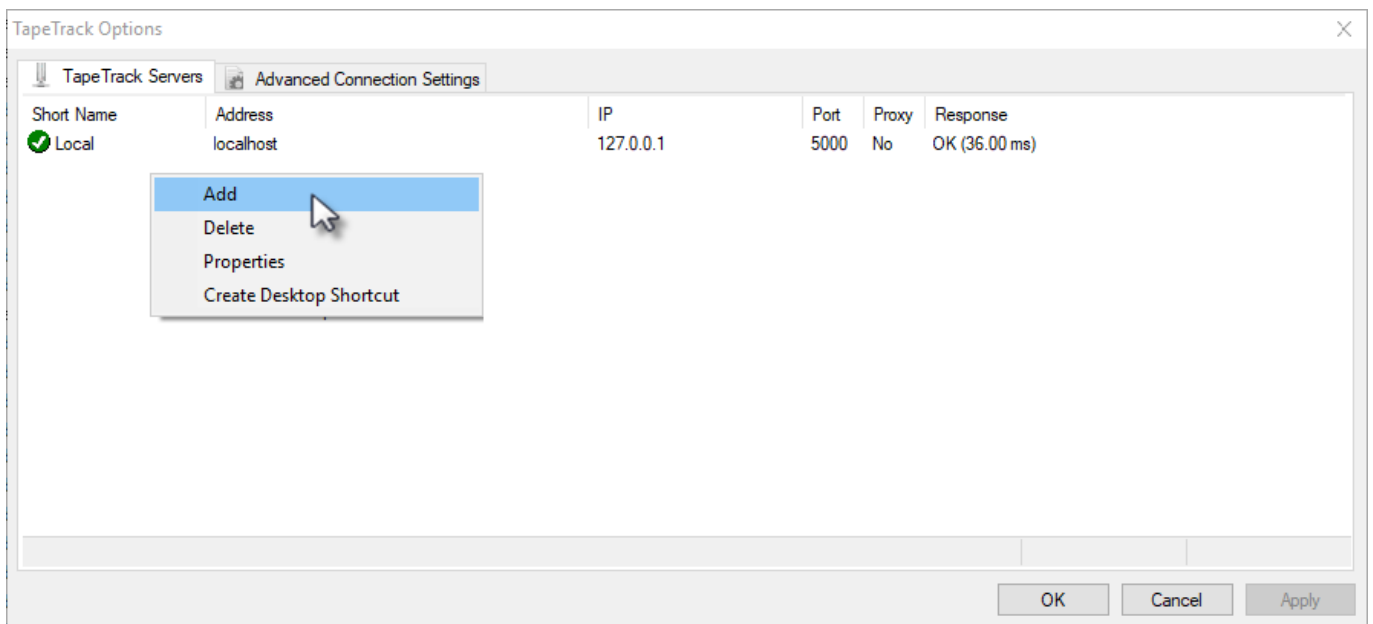
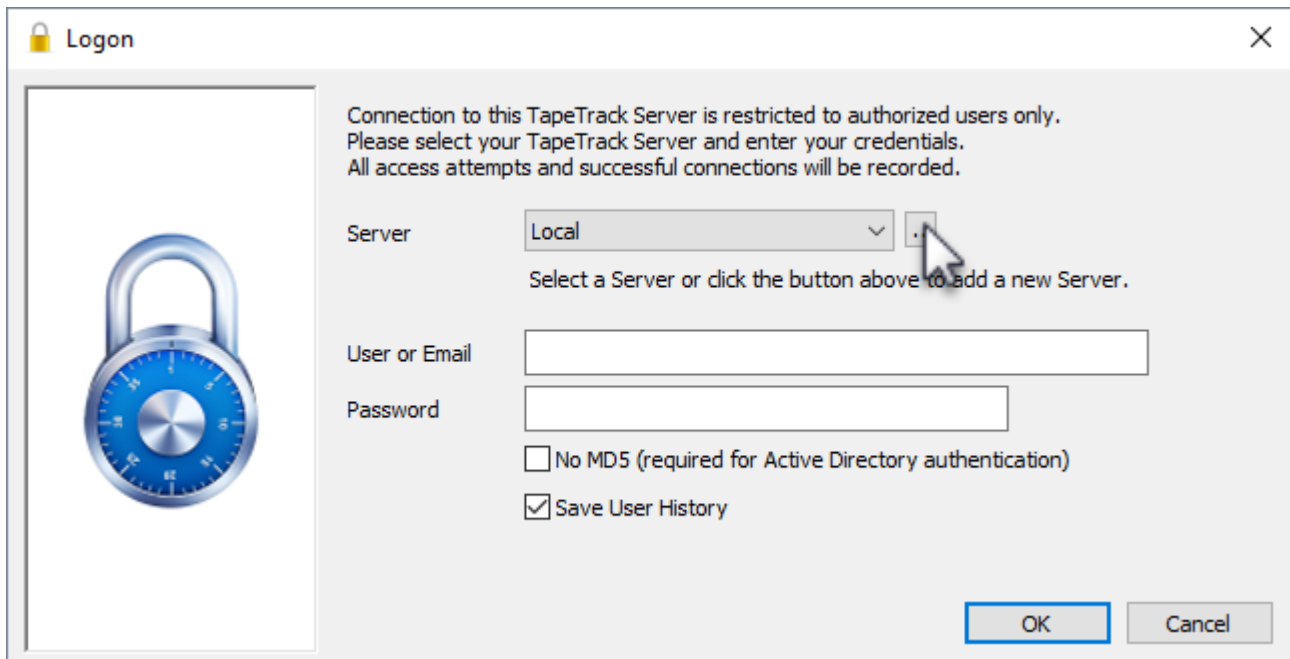


Adding a Desktop Server Connection



TapeTrack Options

TapeTrack Servers | Advanced Connection Settings

HTTP Proxy Settings

Address: proxy.gazillabyte.local

Port: 3128


User ID: gnicol

Password: ●●●●●●

Automatically Detect HTTP Proxy

OK Cancel Apply

Server Information



Server Name	My Server
Server Address	tapetrack.mycompany.com
Server Port	5000
Use HTTP Proxy	False
Use Single Sign-On	False

Server Address
TapeTrack Server name or IP address
Example 'tapetrack.mydomain.com' or '192.168.1.10'

OK Cancel



From: <https://rtfm.tapetrack.com/> - **TapeTrack Documentation**

Permanent link: https://rtfm.tapetrack.com/desktop/adding_connection?rev=1496879078

Last update: 2025/01/21 22:07



