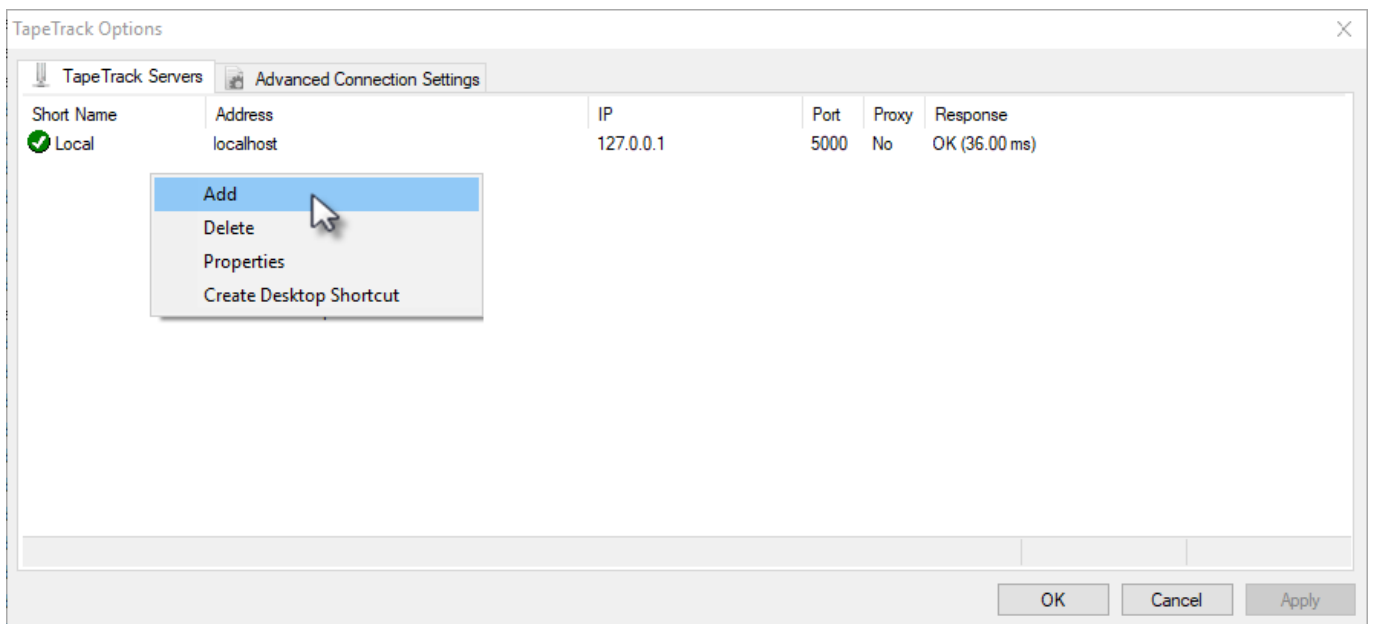
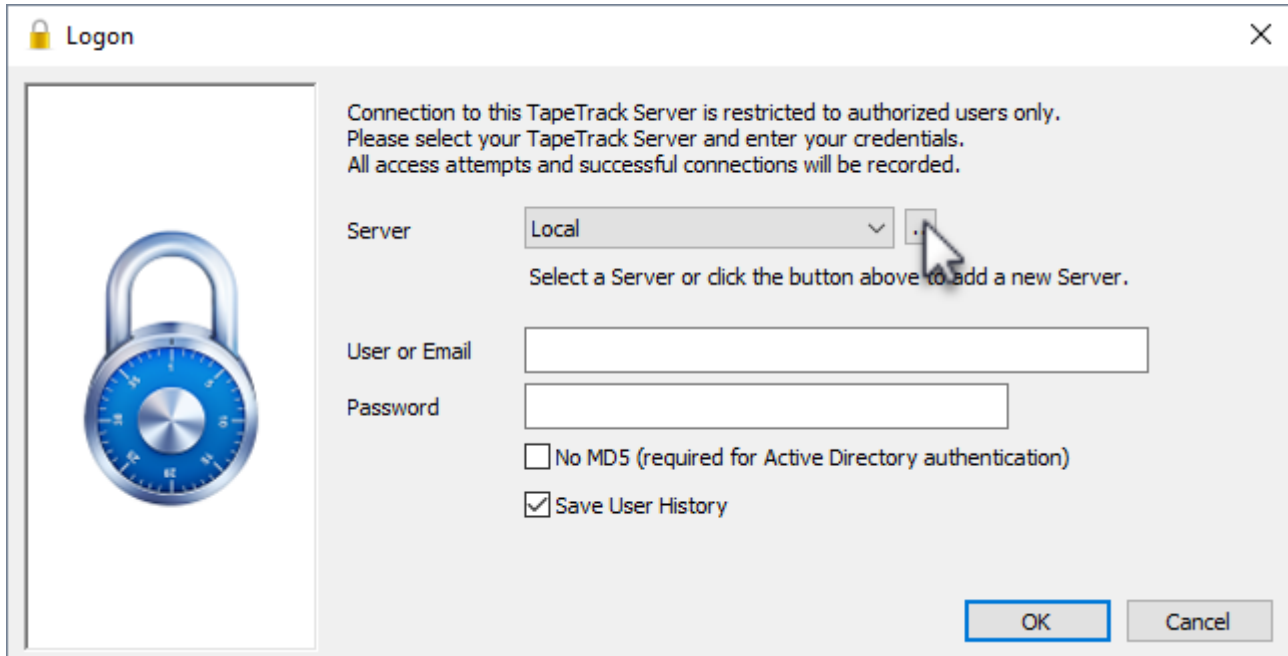



Adding a Desktop Server Connection

When using one of the TapeTrack Desktop Programs you will have to have one or more TapeTrack Framework Server connections defined.



Server Information [X]



Server Name	My Server
Server Address	tapetrack.mycompany.com
Server Port	5000
Use HTTP Proxy	False
Use Single Sign-On	False

Server Address
TapeTrack Server name or IP address
Example 'tapetrack.mydomain.com' or '192.168.1.10'

TapeTrack Options [X]

TapeTrack Servers | **Advanced Connection Settings**

HTTP Proxy Settings

Address:

Port:

User ID:

Password:



From:
<https://rtfm.tapetrack.com/> - **TapeTrack Documentation**

Permanent link:
https://rtfm.tapetrack.com/desktop/adding_connection?rev=1504539289

Last update: **2025/01/21 22:07**



