

Adding a Desktop Server Connection

Overview

When using the TapeTrack Desktop Software you will have to have one or more TapeTrack Framework Server entries defined so that you can connect to a server endpoint.

This can be done in the following ways:

1. Adding a connection interactively.
2. Adding a connection to the Configuration File.
3. Clicking on a URL.
4. Clicking a Windows Registry File.



When using TapeTrack TapeMaster that was installed as part of the TapeTrack Framework Server installation, an entry for localhost will be automatically added by the installer.

Prerequisites

To configure a server you will need the following information:

1. The server IP address or DSN name.
2. The server port (usually 5000).
3. If you are connecting via a HTTP Proxy:
 - The proxy IP address or DNS Name.
 - The proxy port
 - The proxy user name (if authentication is required)
 - The proxy password (if authentication is required)

Adding a connection interactively

Logon

Connection to this TapeTrack Server is restricted to authorized users only. Please select your TapeTrack Server and enter your credentials. All access attempts and successful connections will be recorded.

Server: Local [Add]

Select a Server or click the button above to add a new Server.

User or Email: []

Password: []

No MD5 (required for Active Directory authentication)

Save User History

OK Cancel

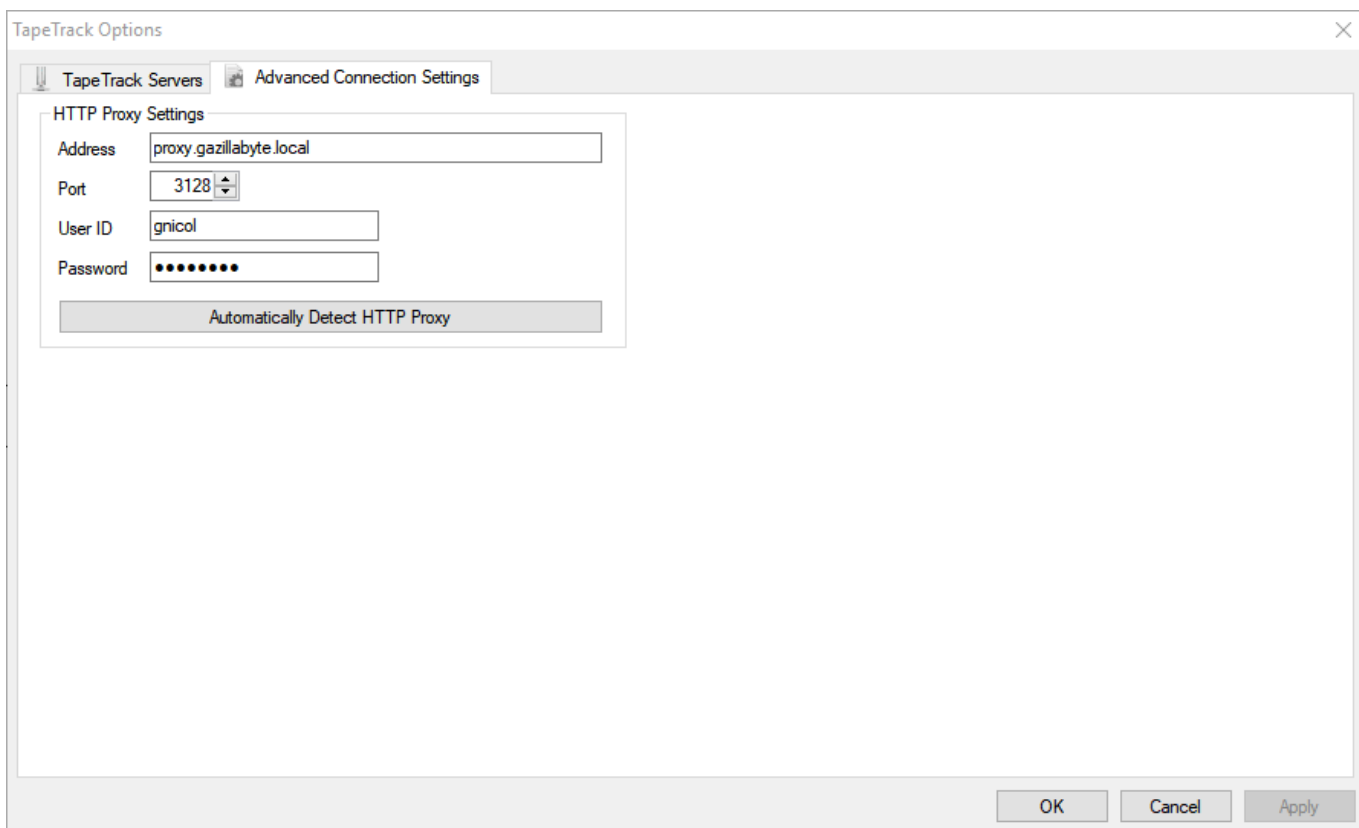
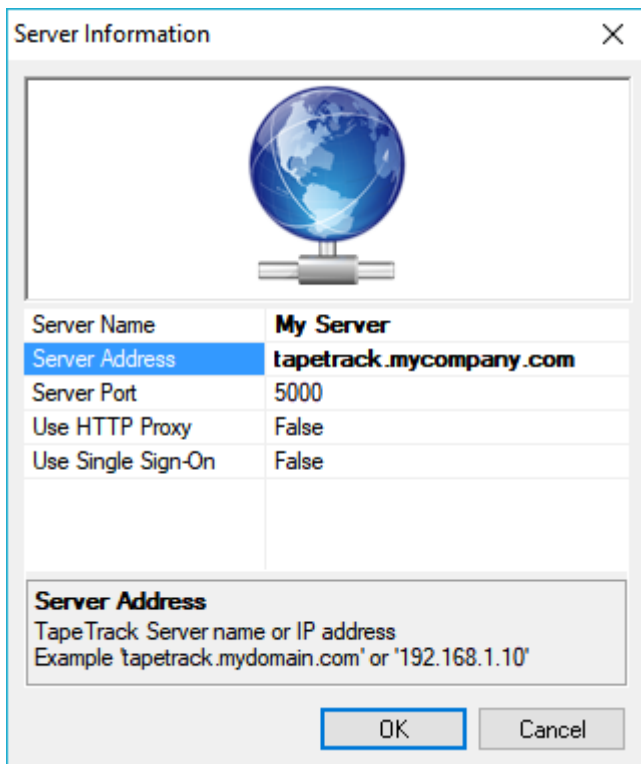
TapeTrack Options

TapeTrack Servers | Advanced Connection Settings

Short Name	Address	IP	Port	Proxy	Response
Local	localhost	127.0.0.1	5000	No	OK (36.00 ms)

Context menu: Add, Delete, Properties, Create Desktop Shortcut

OK Cancel Apply



Adding a connection with the Configuration File

Each TapeTrack Desktop Program has a configuration file that is kept in

```
servers =
```

```
{  
  Server1 = { host = "odpapi-test.tapetrack.com"; };  
  Server2 = { host = "odpapi-test.tapetrack.com"; port=433; proxy=true; };  
};
```

From:

<https://rtfm.tapetrack.com/> - **TapeTrack Documentation**

Permanent link:

https://rtfm.tapetrack.com/desktop/adding_connection?rev=1504543208

Last update: **2025/01/21 22:07**

