

# Adding a Desktop Server Connection

## Overview

When using the TapeTrack Desktop Software you will have to have one or more TapeTrack Framework Server entries defined so that you can connect to a server endpoint.

This can also be achieved in the following ways:

1. [Adding a connection to the Configuration File.](#)
2. [Clicking on a URL.](#)
3. [Clicking a Windows Registry File.](#)



When using TapeTrack TapeMaster that was installed as part of the TapeTrack Framework Server installation, an entry for localhost will be automatically added by the installer.

## Prerequisites

To configure a server you will need the following information:

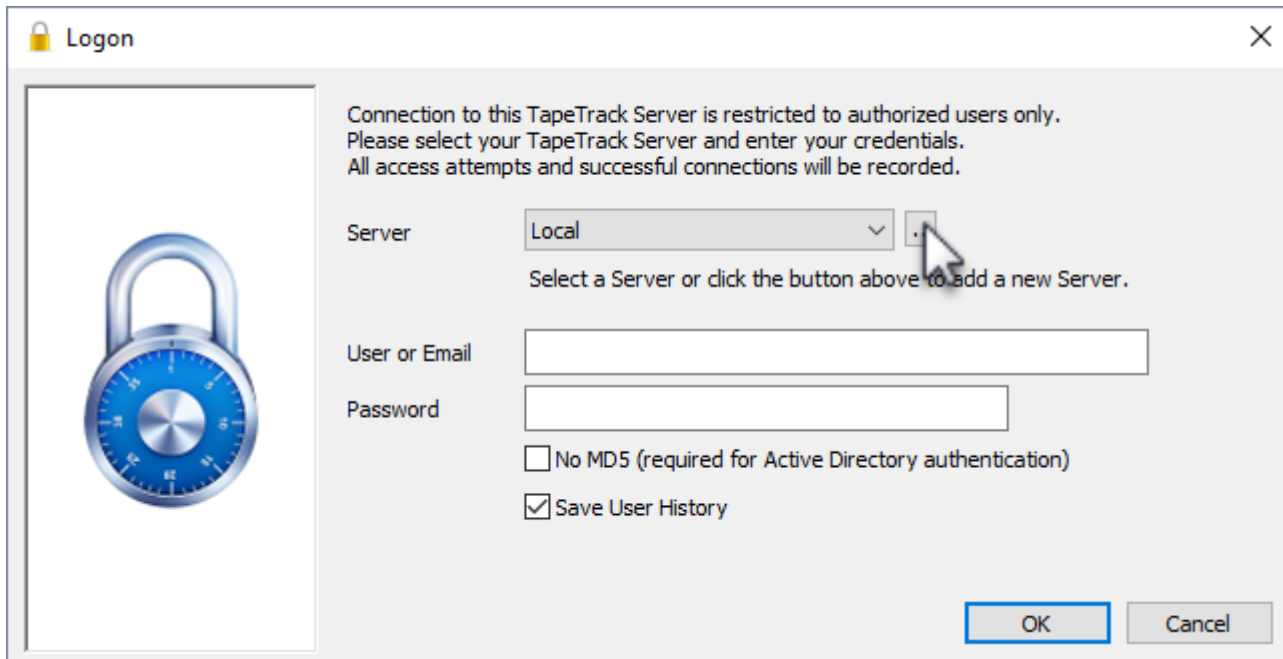
1. The server IP address or DSN name.
2. The server port (usually 5000).
3. If you are connecting via a HTTP Proxy:
  - The proxy IP address or DNS Name.
  - The proxy port
  - The proxy user name (if authentication is required)
  - The proxy password (if authentication is required)

## Adding a connection interactively

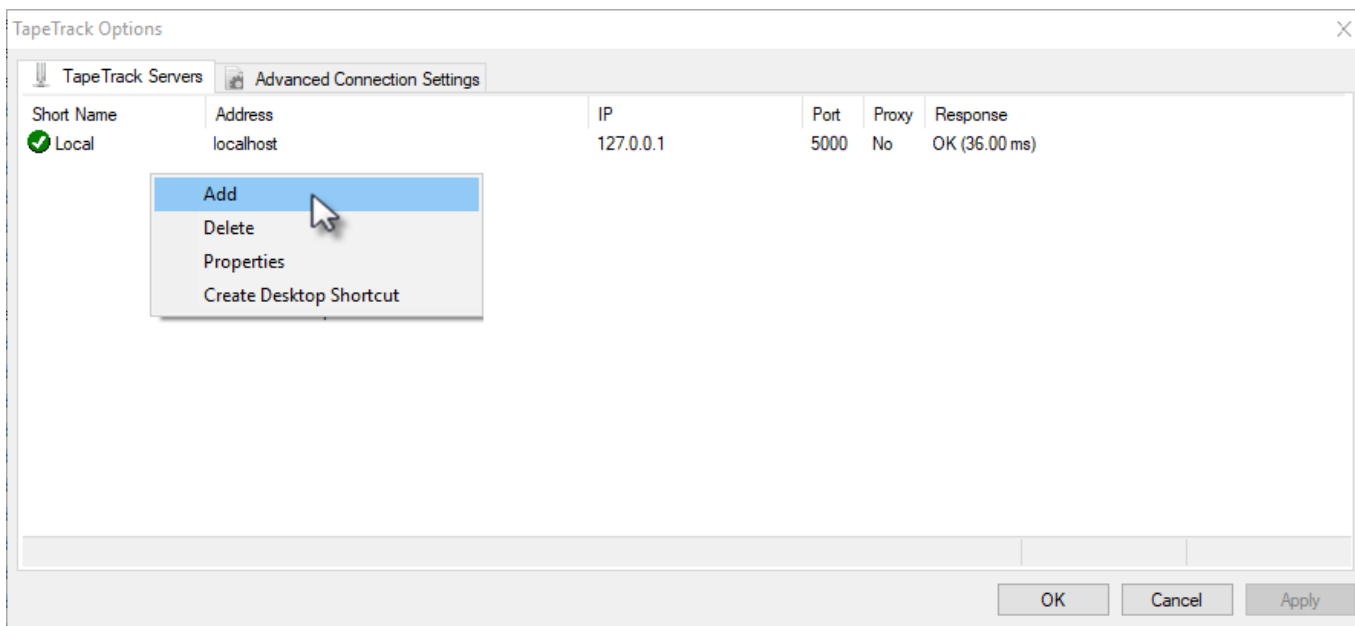
When you run one of the TapeTrack Desktop Programs, you will be prompted to enter a credentials to login.

If you do not have any TapeTrack Framework Servers defined, you will be asked if you want to add one.

If you wish to add an additional server, or delete an existing server, you should click the edit button, which is located next to the Server Selection Dropdown Window.



You will then be presented with the Defined Server List. From this list, right hand click, and select Add from the Context Menu.




### The Server Options Dialog

You will then be shown the Edit Server Information Dialog where you should enter:

- 1. Server Name
- 2. Server Address
- 3. Server Port
- 4. Use HTTP Proxy
- 5. Use Single Sign-On

Server Information



Server Name	<b>My Server</b>
Server Address	<b>tapetrack.mycompany.com</b>
Server Port	5000
Use HTTP Proxy	False
Use Single Sign-On	False

**Server Address**  
TapeTrack Server name or IP address  
Example 'tapetrack.mydomain.com' or '192.168.1.10'

OK Cancel

TapeTrack Options

TapeTrack Servers | Advanced Connection Settings

HTTP Proxy Settings

Address: proxy.gazillabyte.local

Port: 3128

User ID: gnicol

Password: ●●●●●●

Automatically Detect HTTP Proxy

OK Cancel Apply

From: <https://rtfm.tapetrack.com/> - **TapeTrack Documentation**

Permanent link: [https://rtfm.tapetrack.com/desktop/adding\\_connection?rev=1504548629](https://rtfm.tapetrack.com/desktop/adding_connection?rev=1504548629)

Last update: **2025/01/21 22:07**



