

TapeTrack Checkpoint

TapeTrack Checkpoint is designed for Tape Librarians. It displays an online list of what [Volumes](#) need to be picked and/or put away as it audibly reads out the locations as the [Volumes](#) are scanned with a [barcode scanner](#).

Supported Platforms

- Windows XP and above.

Technical Support

TapeTrack Software is commercially supported by a full time help desk staff.

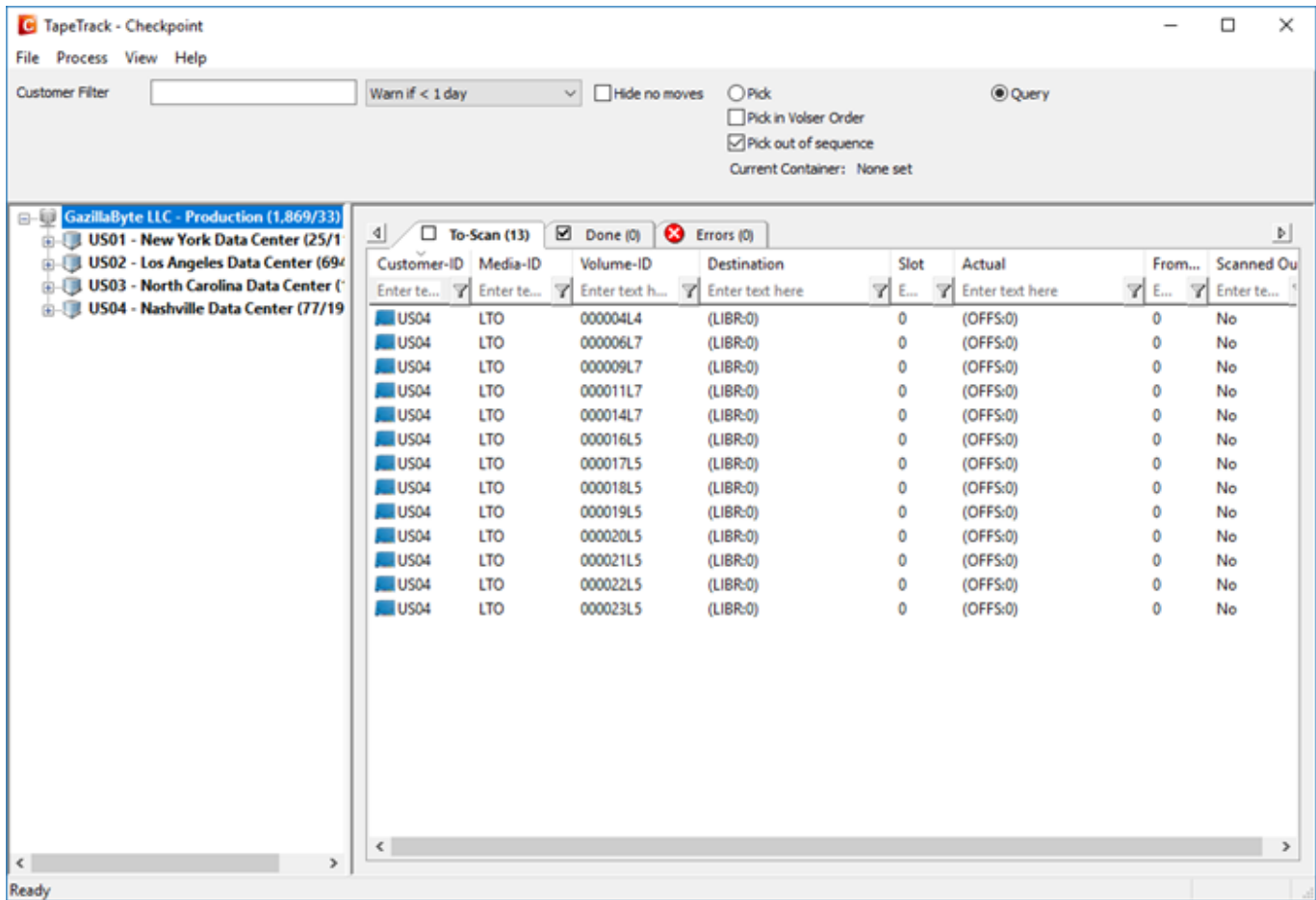
If you are experiencing problems or want some advice on how to configure or use the product, please see the [Accessing Technical Support](#) page.

2017/05/28 21:56 · Gerard Nicol

TapeTrack Security

TapeTrack Software is created with security always in mind. For further details on how TapeTrack is designed, please see the [TapeTrack Security](#) section.

2017/06/09 17:45 · Gerard Nicol



Installation

Installing

- [System Requirements](#)
- [Downloading the software](#)
- [What will be installed](#)
- [Installing the software](#)
- [Firewall Requirements](#)

Testing the installation

When the product is installed you will see a TapeTrack Checkpoint icon on the Windows Desktop and shortcuts to TapeTrack Checkpoint in the Windows Start Menu.

To test that the program has been installed, double-click on either the Desktop or Start Menu shortcut. No updates will be performed by simply starting the program.

Users Guide

- [Getting Started](#)
- [Advanced Usage](#)
- [GUI](#)

Changelog

[Checkpoint Changelog](#)

From:

<https://rtfm.tapetrack.com/> - **TapeTrack Documentation**

Permanent link:

<https://rtfm.tapetrack.com/desktop/checkpoint?rev=1544662771>

Last update: **2025/01/21 22:07**

