

TapeTrack Lite

TapeTrack Lite is a Windows Wizard that guides users with a minimal number of tapes through the process of sending tapes offsite and scanning them back in when they return.

Supported Platforms

- Windows XP and above.

Technical Support

TapeTrack Software is commercially supported by a full time help desk staff.

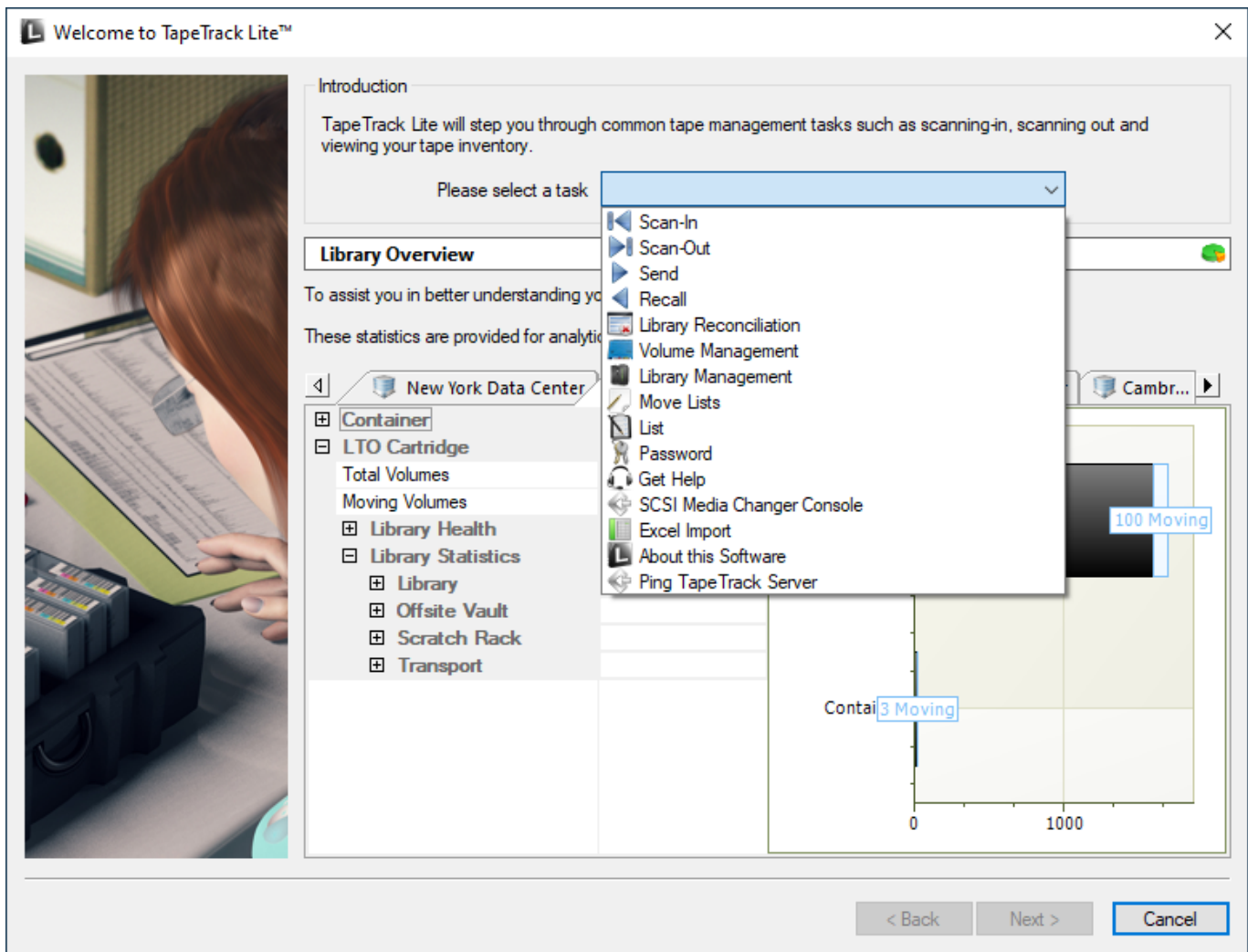
If you are experiencing problems or want some advice on how to configure or use the product, please see the [Accessing Technical Support](#) page.

2017/05/28 21:56 · Gerard Nicol

TapeTrack Security

TapeTrack Software is created with security always in mind. For further details on how TapeTrack is designed, please see the [TapeTrack Security](#) section.

2017/06/09 17:45 · Gerard Nicol



Installation

Installing

1. [System Requirements](#)
2. [Downloading the software](#)
3. [What will be installed](#)
4. [Installing the software](#)
5. [Firewall Considerations](#)

Testing the installation

When the product is installed you will see a TapeTrack Lite icon on the Windows Desktop and shortcuts to TapeTrack Lite in the Windows Start Menu.

To test that the program has been installed, double-click on either the Desktop or Start Menu shortcut. No updates will be performed by simply starting the program.

Users Guide

- [Getting Started](#)
- [Advanced Usage](#)

From:
<https://rtfm.tapetrack.com/> - **TapeTrack Documentation**

Permanent link:
<https://rtfm.tapetrack.com/desktop/lite?rev=1519660428>

Last update: **2025/01/21 22:07**

