

# TapeTrack Lite

TapeTrack Lite is a Windows Wizard that guides users with a minimal number of [Volumes](#) through the process of [sending Volumes](#) offsite and [scanning them in](#) when they return.

## Supported Platforms

- Windows 7 and above.

## Technical Support

TapeTrack Software is commercially supported by a full time help desk staff.

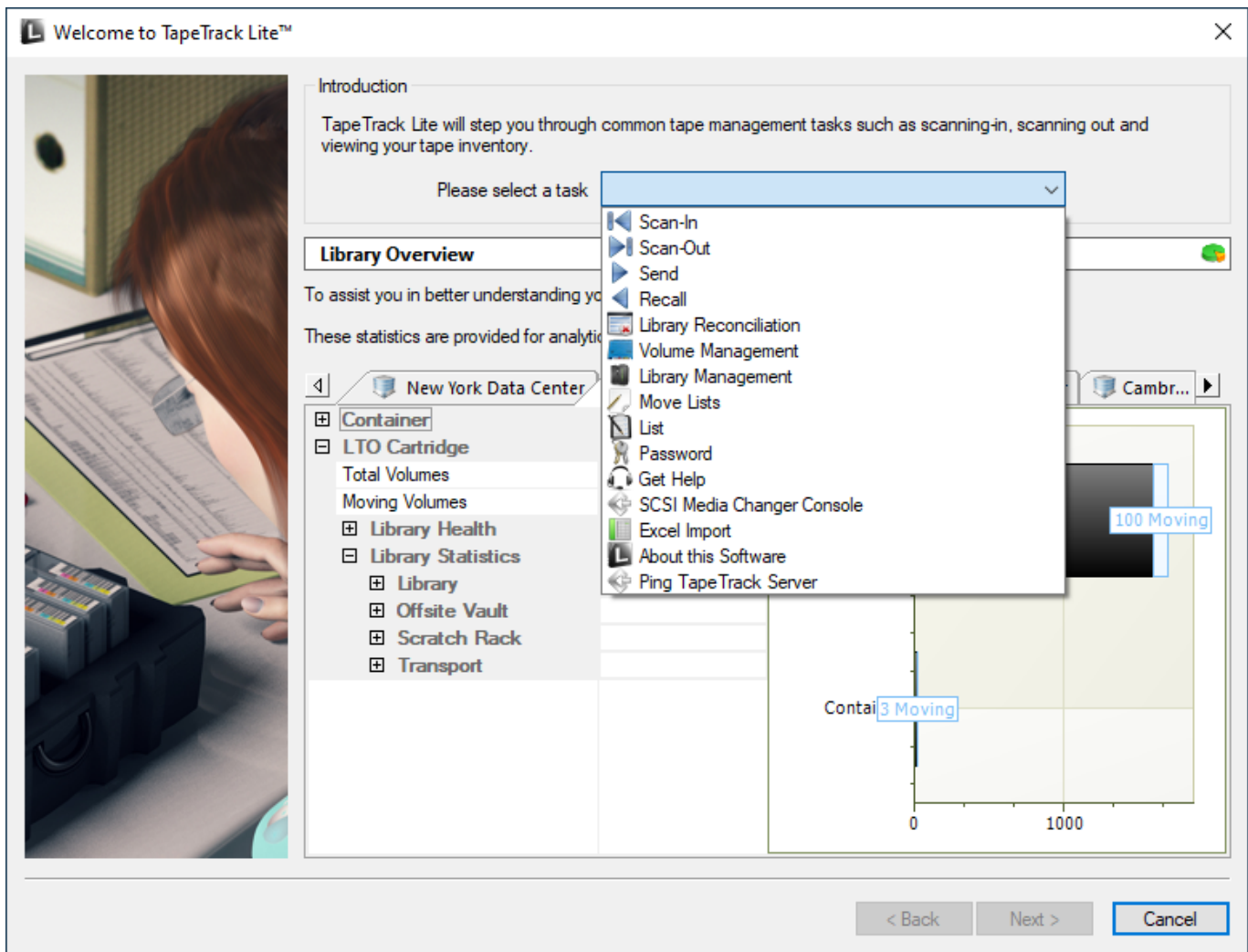
If you are experiencing problems or want some advice on how to configure or use the product, please see the [Accessing Technical Support](#) page.

2017/05/28 21:56 · Gerard Nicol

## TapeTrack Security

TapeTrack Software is created with security always in mind. For further details on how TapeTrack is designed, please see the [TapeTrack Security](#) section.

2017/06/09 17:45 · Gerard Nicol



## Installation

### Installing

1. [System Requirements](#)
2. [Downloading the software](#)
3. [What will be installed](#)
4. [Installing the software](#)
5. [Firewall Considerations](#)

### Testing the installation

When TapeTrack Lite is installed you will see an icon on the Windows Desktop and shortcuts to TapeTrack Lite in the Windows Start Menu.

To test that TapeTrack Lite has been installed, double-click on either the Desktop or Start Menu shortcut. No updates will be performed by simply starting the program.

# Users Guide

- [Getting Started](#)
- [Advanced Usage](#)
- [Day to day Usage](#)

# Changelog

[Lite Changelog](#)

From:

<https://rtfm.tapetrack.com/> - **TapeTrack Documentation**

Permanent link:

<https://rtfm.tapetrack.com/desktop/lite?rev=1598318506>

Last update: **2025/01/21 22:07**

