

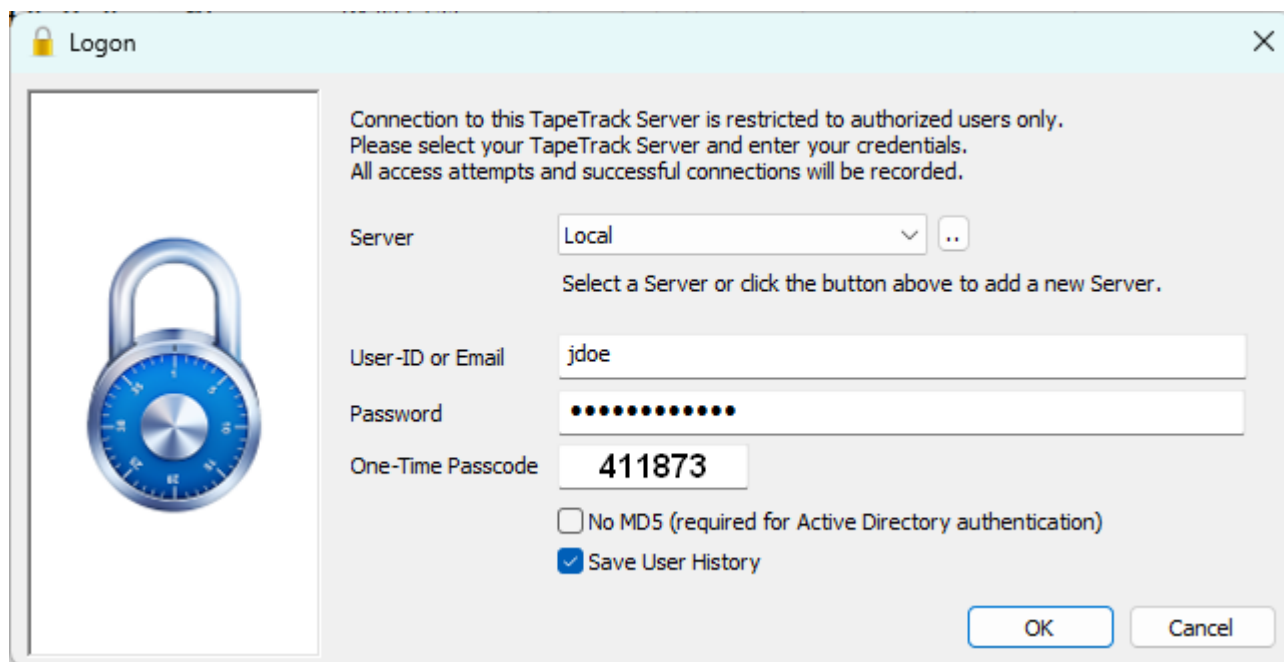
Desktop Logon

To Logon from your desktop, select your server from the drop-down menu.

Enter your [User-ID](#) and [Password](#).

Check **No MD5** if using Active Domain Integration.

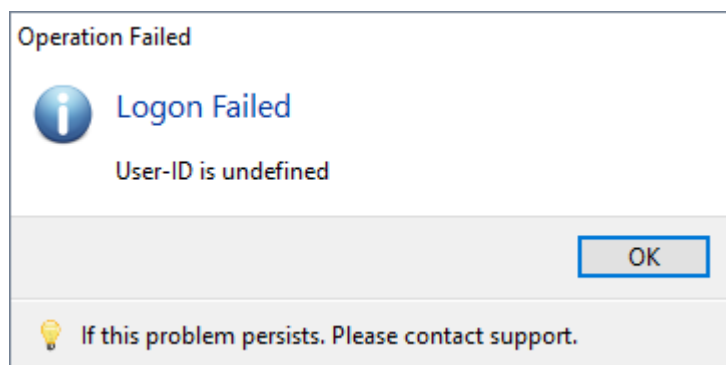
Click OK to login.



Login Errors

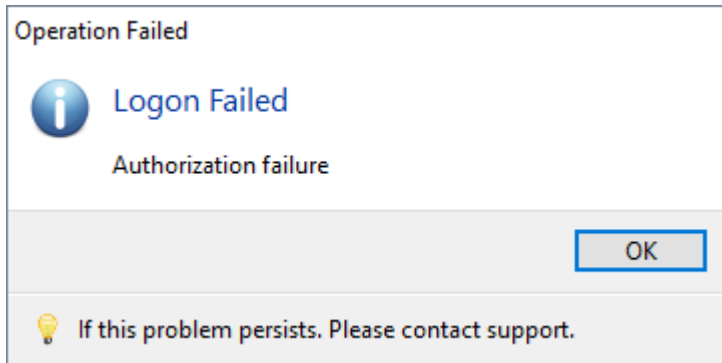
Incorrect User-ID

If you enter an incorrect [User-ID](#) you will see a popup saying **User-ID is undefined**. Check to make sure your user-ID (or email if associated with your user-ID) is correct before logging in.

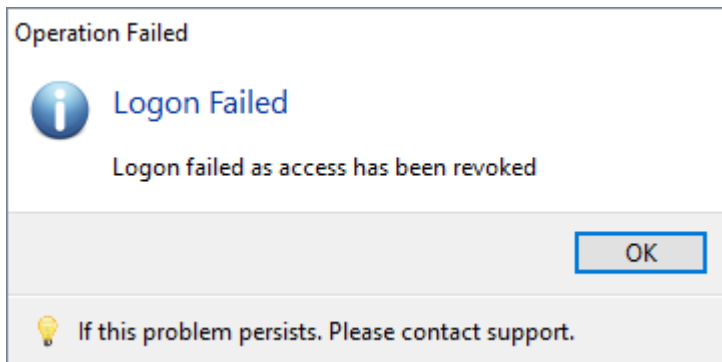


Incorrect Password

If you enter an incorrect password you will see a popup saying **Logon Failed**. Ensure your password is typed in correctly. If using Active Domain Integration, ensure **NO MD5** is checked.



After 4 incorrect logins, user access will be revoked as a security measure. To reactivate access your administrator will need to reset your password.



From:
<https://rtfm.tapetrack.com/> - **TapeTrack Documentation**

Permanent link:
https://rtfm.tapetrack.com/desktop/logon_window?rev=1529541851

Last update: **2025/01/21 22:07**

