

Desktop Logon



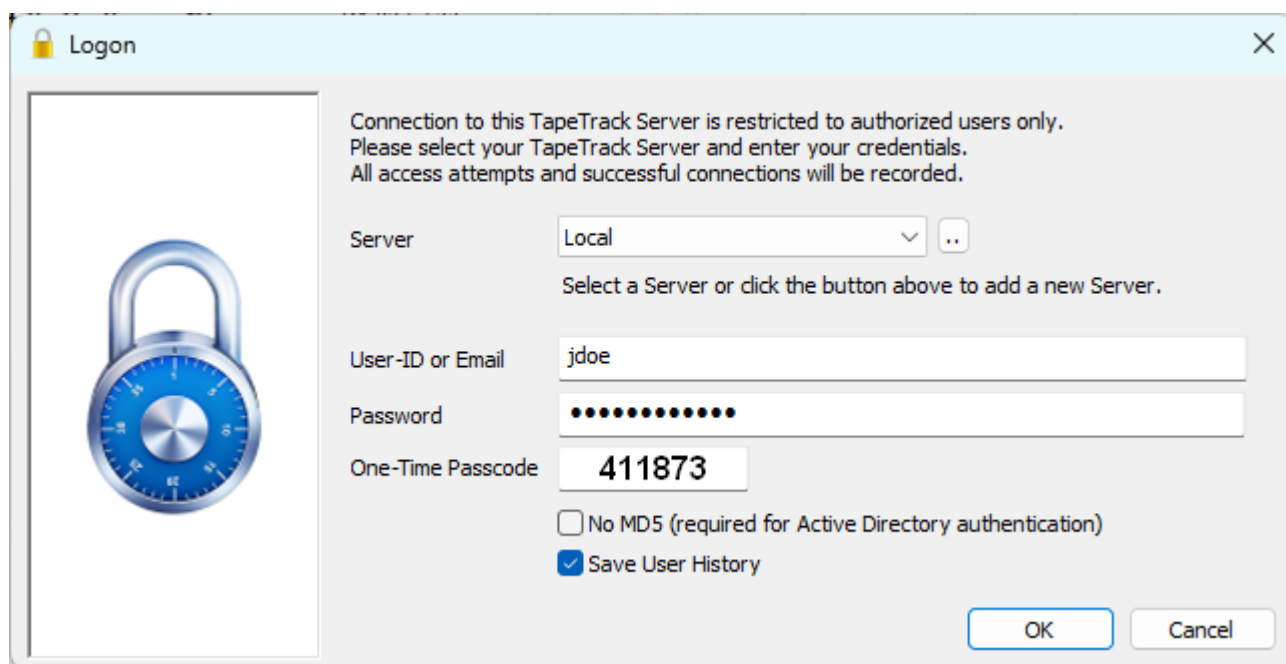
All user and server details shown are examples only. You will need to insert your own values in order to make a successful connection to your server.

To Logon from your desktop, select your server from the drop-down menu.

Enter your [User-ID](#) and [Password](#).

Check No MD5 if using Active Domain Integration.

Click OK to login.



Login Errors

For troubleshooting login errors see [Troubleshooter Login](#)

From: <https://rtfm.tapetrack.com/> - **TapeTrack Documentation**

Permanent link: https://rtfm.tapetrack.com/desktop/logon_window?rev=1599438776

Last update: **2025/01/21 22:07**

