

Desktop Logon



All user and server details shown are examples only. You will need to insert your own values in order to make a successful connection to your server.

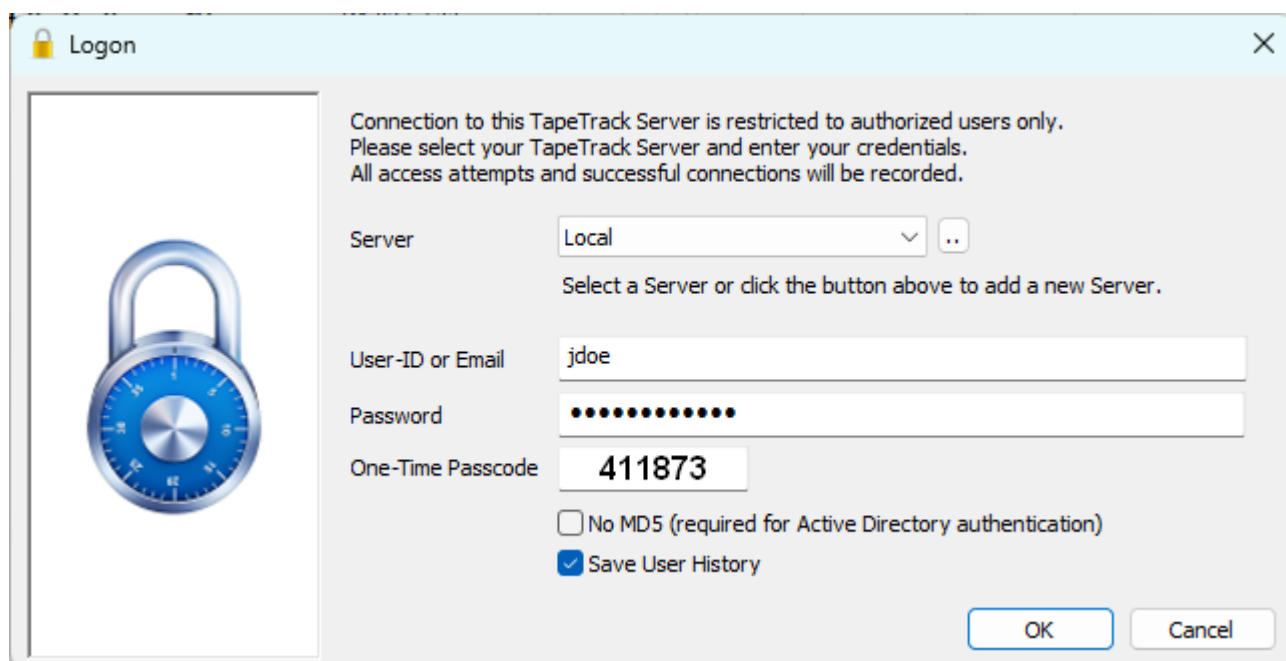
To Logon from your desktop, select your server from the drop-down menu.

Enter your [User-ID](#) and [Password](#).

Check No MD5 if using Active Domain Integration.

If you have been assigned One Time Password, enter the code from your authenticator app.

Click OK to login.



Login Errors

For troubleshooting login errors see [Troubleshooter Login](#)

From: <https://rtfm.tapetrack.com/> - **TapeTrack Documentation**

Permanent link: https://rtfm.tapetrack.com/desktop/logon_window?rev=1730687283

Last update: **2025/01/21 22:07**

