

Desktop Logon



All user and server details shown are examples only. You will need to insert your own values in order to make a successful connection to your server.

To Logon from your desktop, select your server from the drop-down menu.

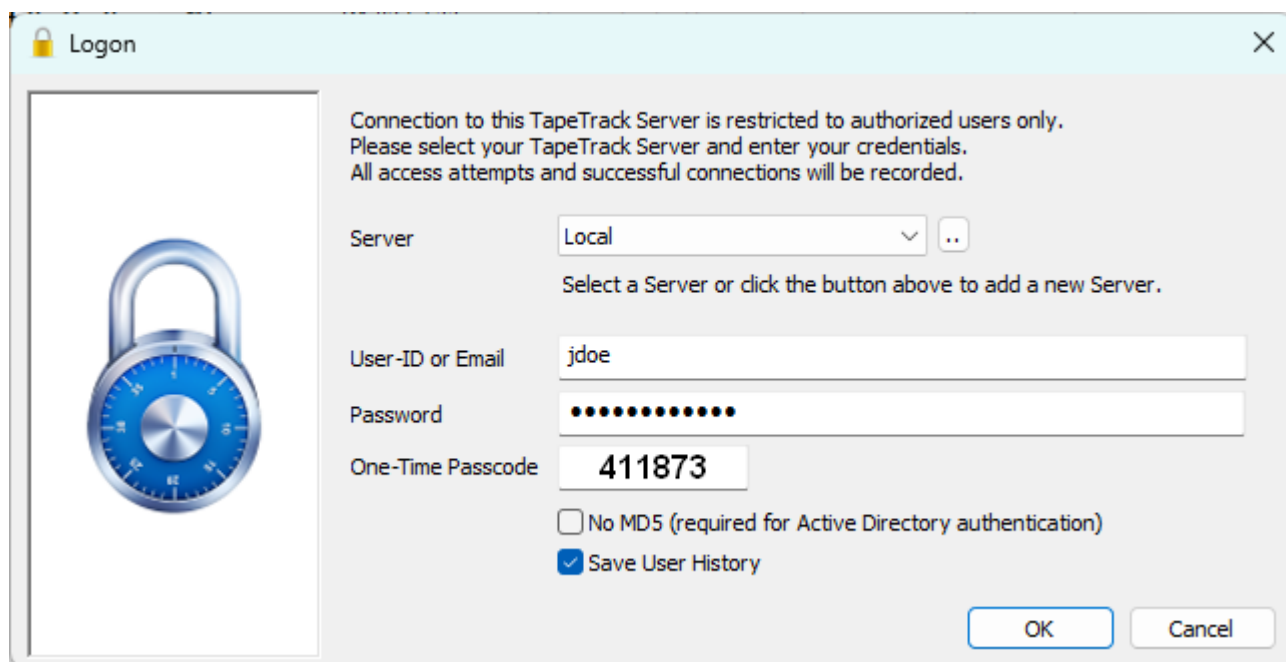
Enter your [User-ID](#) and [Password](#).

Check **No MD5** if using Active Domain Integration.

If you have been assigned One Time Password and have not yet activated it, follow the instructions at

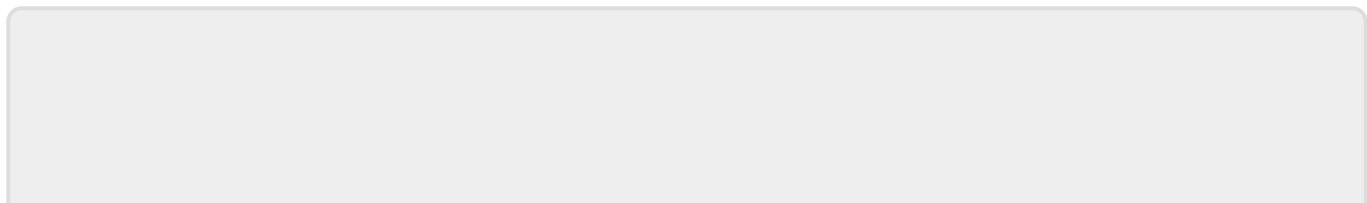
If you have been assigned One Time Password and have activated it, enter the code from your authenticator app.

Click **OK** to login.



Login Errors

For troubleshooting login errors see [Troubleshooter Login](#)



From:

<https://rtfm.tapetrack.com/> - **TapeTrack Documentation**

Permanent link:

https://rtfm.tapetrack.com/desktop/logon_window?rev=1730687501

Last update: **2025/01/21 22:07**

