

TapeTrack TapeMaster

TapeTrack TapeMaster is the administration and power-user interface to TapeTrack.

Supported Platforms

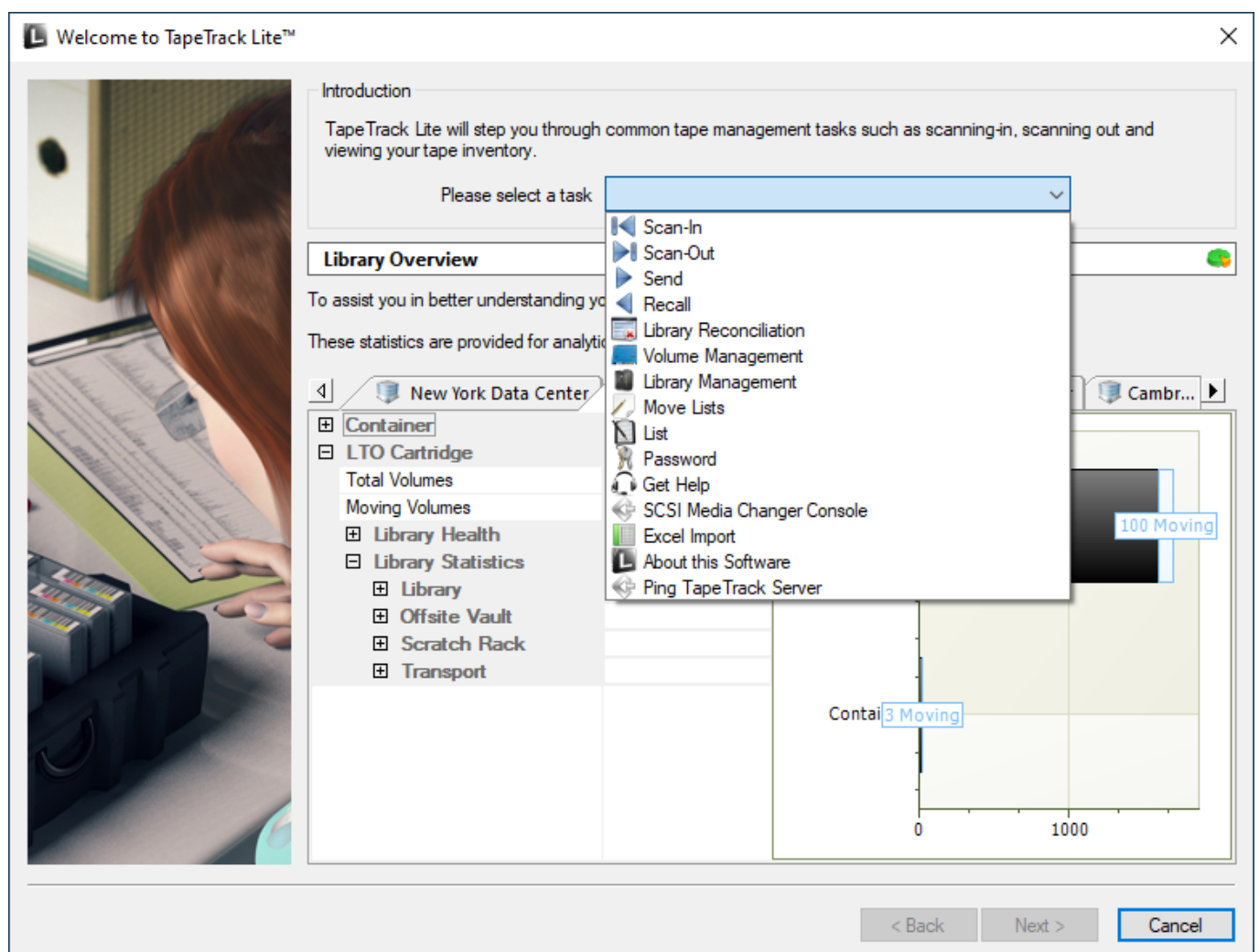
- Windows XP and above.

Technical Support

TapeTrack Software is commercially supported by a full time help desk staff.

If you are experiencing problems or want some advice on how to configure or use the product, please see the [Accessing Technical Support](#) page.

2017/05/28 21:56 · Gerard Nicol



Installation

Installing

1. [System Requirements](#)
2. [Downloading the software](#)
3. [What will be installed](#)
4. [Installing the software](#)
5. [Firewall Requirements](#)

Testing the installation

When the product is installed you will see a TapeTrack Lite icon on the Windows Desktop and shortcuts to TapeTrack Lite in the Windows Start Menu.

To test that the program has been installed, double click on either the Desktop or Start Menu shortcut. No updates will be performed by simply starting the program.

Users Guide

- [Getting Started](#)
- [Advanced Usage](#)

From:
<https://rtfm.tapetrack.com/> - **TapeTrack Documentation**

Permanent link:
<https://rtfm.tapetrack.com/desktop/master?rev=1496196168>

Last update: **2025/01/21 22:07**

