

# TapeTrack TapeMaster

TapeTrack TapeMaster is the administration and power-user interface to TapeTrack.

It provides the following functions:

- Full administration of the TapeTrack Framework Server.
- Advanced Reporting capabilities.
- Drag and Drop functionality.

## Supported Platforms

- Windows XP and above.

## Technical Support

TapeTrack Software is commercially supported by a full time help desk staff.

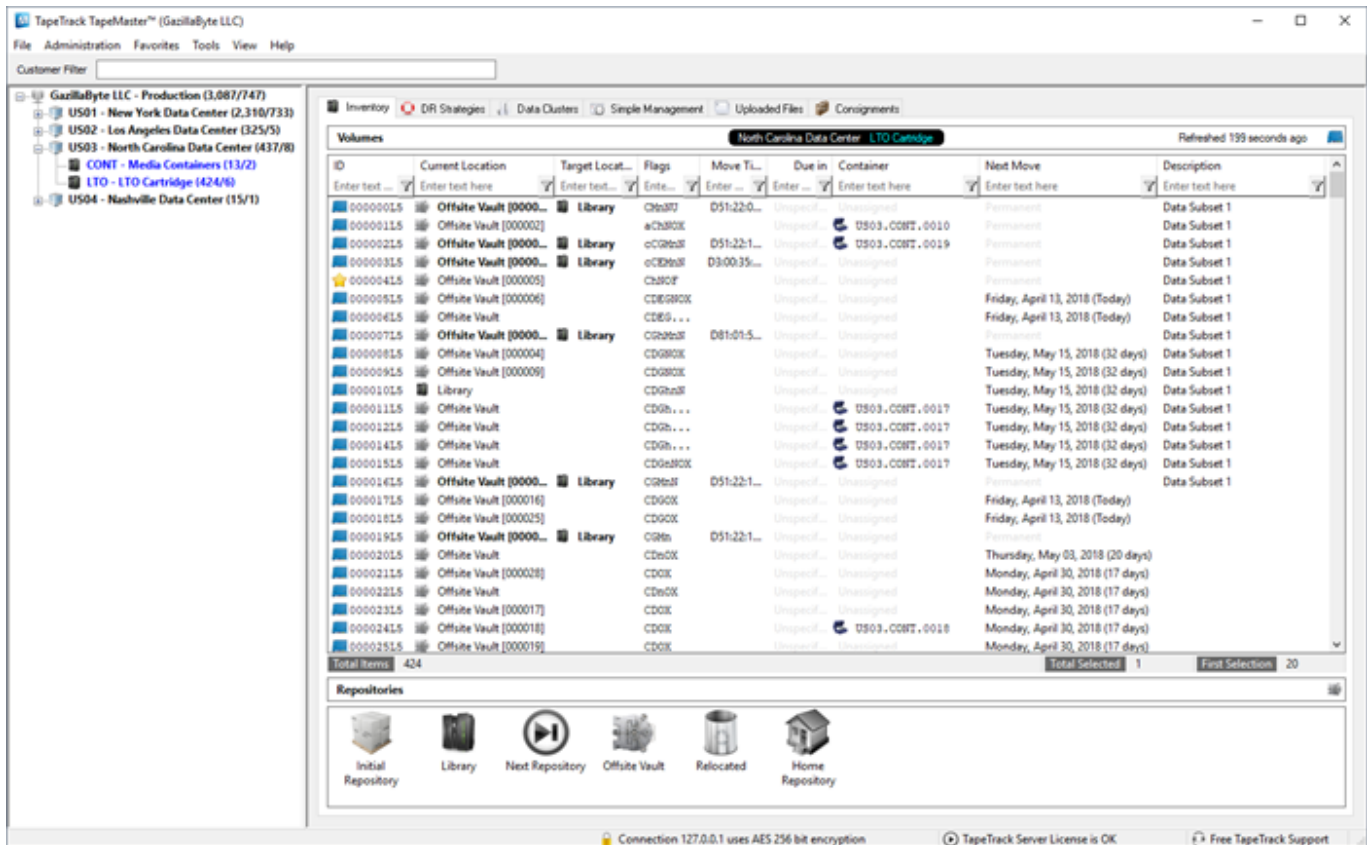
If you are experiencing problems or want some advice on how to configure or use the product, please see the [Accessing Technical Support](#) page.

2017/05/28 21:56 · Gerard Nicol

## TapeTrack Security

TapeTrack Software is created with security always in mind. For further details on how TapeTrack is designed, please see the [TapeTrack Security](#) section.

2017/06/09 17:45 · Gerard Nicol



# Installation

## Installing

- [System Requirements](#)
- [Downloading the software](#)
- [What will be installed](#)
- [Installing the software](#)
- [Firewall Requirements](#)

## Testing the installation

When the product is installed you will see a TapeTrack TapeMaster icon on the Windows Desktop and shortcuts to TapeTrack TapeMaster in the Windows Start Menu.

To test that the program has been installed correctly, double-click on either the Desktop or Start Menu shortcut. No updates will be performed by simply starting the program.

## Users Guide

- [Getting Started](#) (the minimum setup to use the product).
- [Advanced Setup](#) (the other bits you might need to know to setup in your environment).
- [Day to day Usage](#) (the things you should know to get the job done efficiently).

# Changelog

## TapeMaster Changelog

From:  
<https://rtfm.tapetrack.com/> - **TapeTrack Documentation**

Permanent link:  
<https://rtfm.tapetrack.com/desktop/master?rev=1544662625>

Last update: **2025/01/21 22:07**

