

Barcode Scanner

With the Scan Out Volumes input window open and in focus use a barcode scanner, or [CloudScan](#) app, to scan volumes from the Scan-Out list. Correct volumes scanned out will display in the lower window with an audible beep and a message "Request OK". Incorrect volumes will display in the lower window with an audible warning "The volume scanned was not in the list" and message displayed in red. Scanned Volume is not in the list. Incorrect volumes scanned will not be entered into TapeTrack. Click the X in the top right corner when finished scanning volumes.



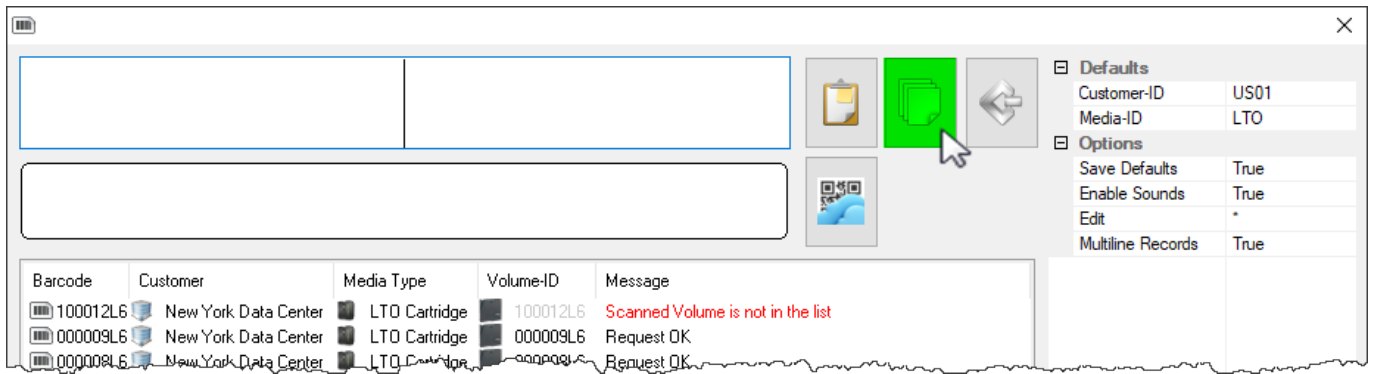
Windows Clipboard

Copy the volume-ID/s to windows clipboard. With the Scan Out Volumes input window open (click the button with the scanner image at the top right of the window to open if required) click the paste button at the top of the window and volume ID/s will be scanned out. Click the X in the top right corner when finished scanning volumes.



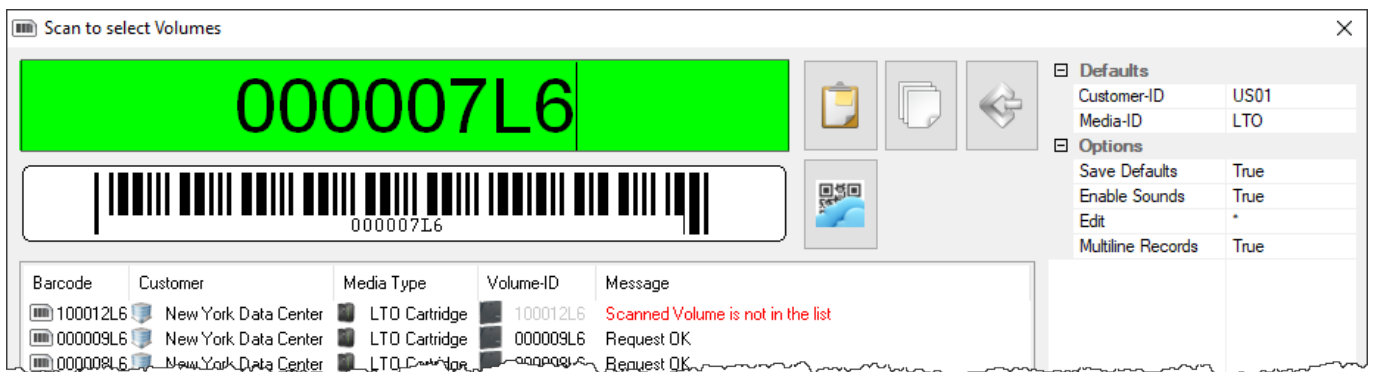
File Input

With the Scan Out Volumes input window open click on the file input button {image} Open the file containing the volumes to be scanned out by clicking on the file input button at the top of the window. Locate and select the file in the browser and click open. Volumes will be loaded from the file and scanned out. Click the X in the top right corner when finished scanning volumes.



Keyboard Input

With the Scan Out Volumes input window open and in focus type in the volume/s barcode and hit enter to scan volumes from the Scan-Out list. Correct volumes scanned out will display in the lower window with an audible beep and a message “Request OK”. Incorrect volumes will display in the lower window with an audible warning “The volume scanned was not in the list” and message displayed in red Scanned Volume is not in the list. Incorrect volumes scanned will not be entered into TapeTrack. Click the X in the top right corner when finished scanning volumes.



From: <https://rtfm.tapetrack.com/> - **TapeTrack Documentation**

Permanent link: https://rtfm.tapetrack.com/desktop/scan_window?rev=1496786339

Last update: **2025/01/21 22:07**

