

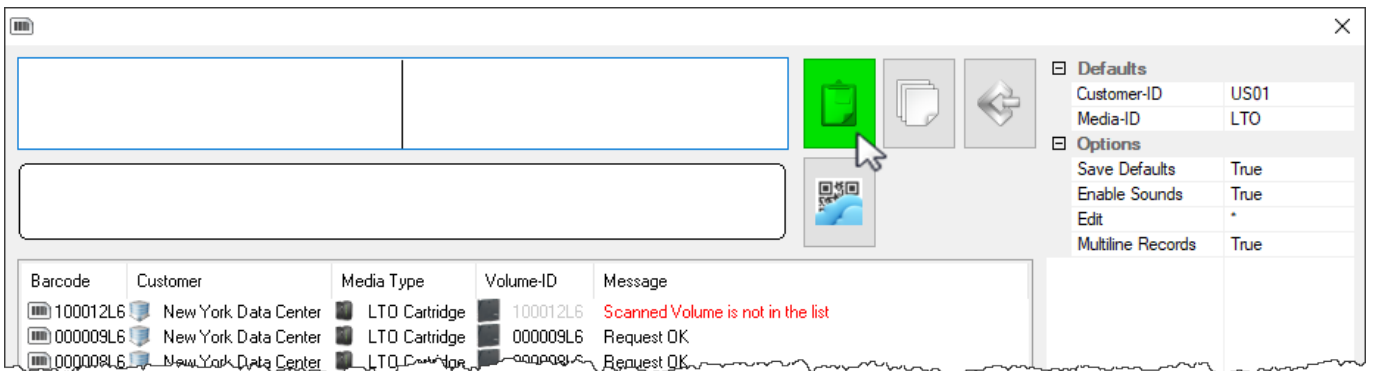
Scan Window

With the Scan Out Volumes input window open and in focus use a barcode scanner, or [CloudScan](#) app, to scan volumes from the Scan-Out list. Correct volumes scanned out will display in the lower window with an audible beep and a message "Request OK". Incorrect volumes will display in the lower window with an audible warning "The volume scanned was not in the list" and message displayed in red Scanned Volume is not in the list. Incorrect volumes scanned will not be entered into TapeTrack. Click the X in the top right corner when finished scanning volumes.



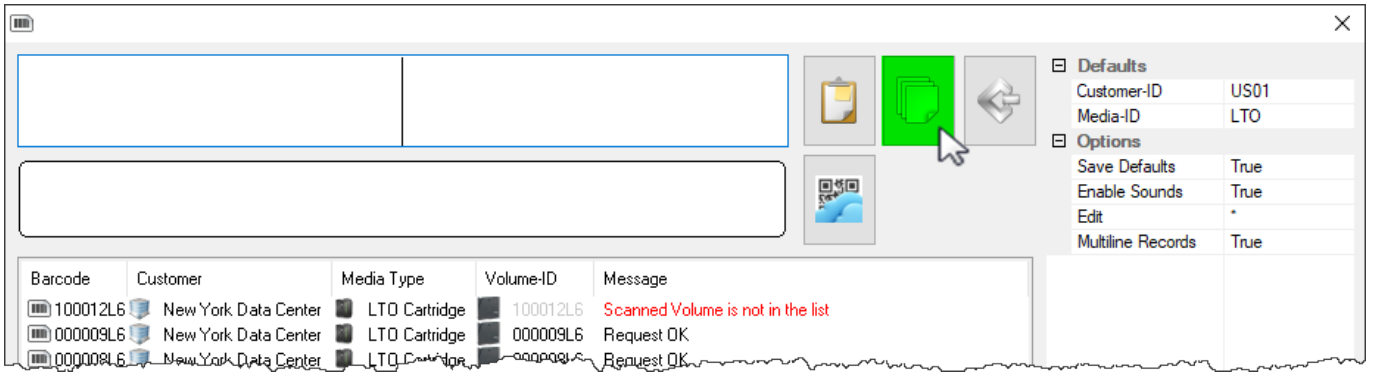
Windows Clipboard

Copy the volume-ID/s to windows clipboard. With the Scan Out Volumes input window open (click the button with the scanner image at the top right of the window to open if required) click the paste button at the top of the window and volume ID/s will be scanned out. Click the X in the top right corner when finished scanning volumes.



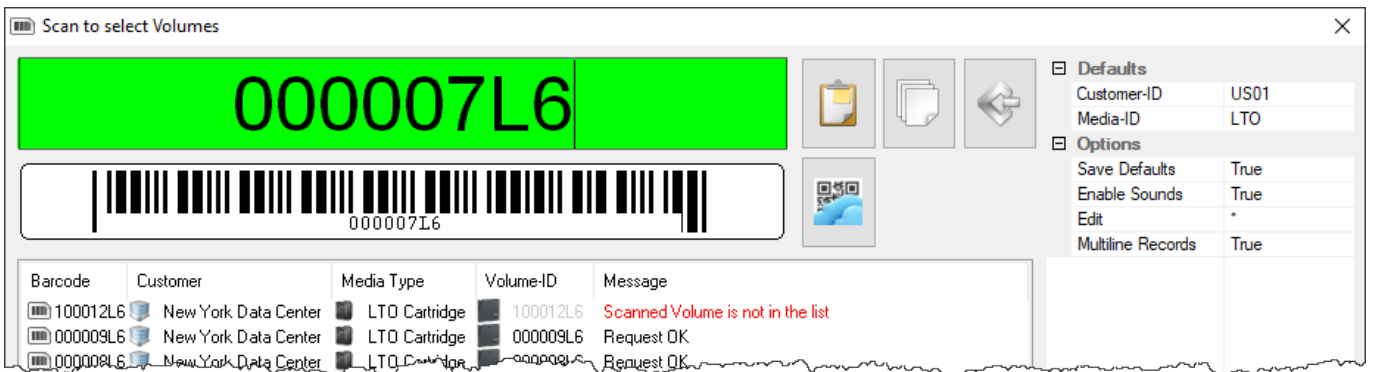
File Input

With the Scan Out Volumes input window open click on the file input button {image} Open the file containing the volumes to be scanned out by clicking on the file input button at the top of the window. Locate and select the file in the browser and click open. Volumes will be loaded from the file and scanned out. Click the X in the top right corner when finished scanning volumes.



Keyboard Input

With the Scan Out Volumes input window open and in focus type in the volume/s barcode and hit enter to scan volumes from the Scan-Out list. Correct volumes scanned out will display in the lower window with an audible beep and a message “Request OK”. Incorrect volumes will display in the lower window with an audible warning “The volume scanned was not in the list” and message displayed in red Scanned Volume is not in the list. Incorrect volumes scanned will not be entered into TapeTrack. Click the X in the top right corner when finished scanning volumes.



Mouse Input

Close the Scan Out Volumes input window by clicking the X in the top corner. In the Scan Out Volumes window select volumes from list by left clicking volume-ID. Multiple volumes can be selected by using shift + click and/or control + click. Right click selected volume/s and select scan. Volumes can also be scanned out by pressing the spacebar after selecting the volumes. As this method simply checks off the volumes displayed care must be taken to ensure the volume ID's displayed accurately match the volumes being selected to scan out.

TapeTrack Lite™ - Scan-Out Volumes

Instructions
The Scan-Out Volume screen allows you to Scan-Out Volumes. Each Volume that is scanned will be flagged with the Scanned-Out flag.

Customer: **US01** New York Data Center
From Repository: **LIBR** Library

Volume	To	Container	Data-Cluster
US01.LTO.000019L6	Offsite Vault	No-Container	
US01.LTO.000019L6	Offsite Vault	No-Container	
US01.LTO.000017L6	Offsite Vault	No-Container	
US01.LTO.000018L6	Offsite Vault	No-Container	
US01.LTO.000019L6	Offsite Vault	No-Container	
US01.LTO.000020L6	Offsite Vault	No-Container	

Scanned Items

- No Container
- US03.LTO.CONT203**
 - US01.LTO.000006L6
 - US01.LTO.000007L6
 - US01.LTO.000008L6
 - US01.LTO.000009L6

From: <https://rtfm.tapetrack.com/> - **TapeTrack Documentation**

Permanent link: https://rtfm.tapetrack.com/desktop/scan_window?rev=1496854948

Last update: **2025/01/21 22:07**

