

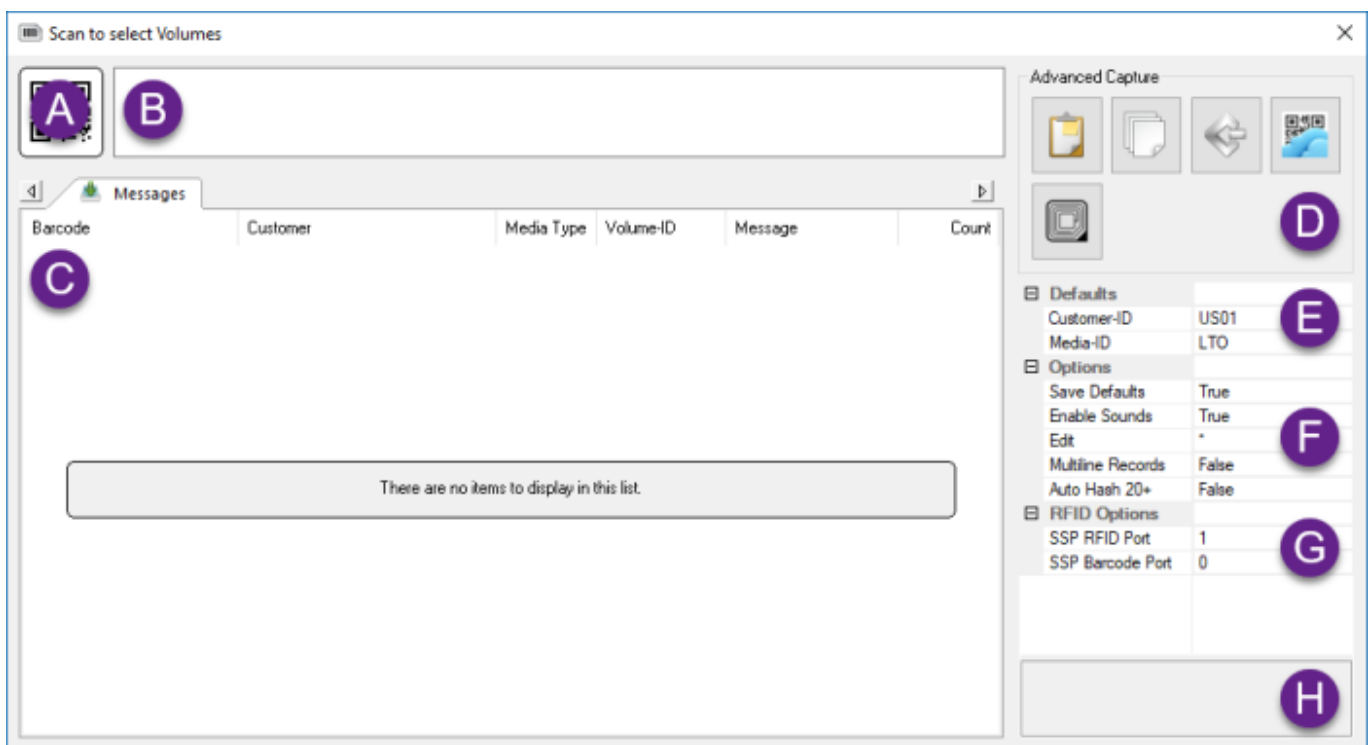
Desktop Scan Window

Overview

The Desktop Scan Window is the common interface used by [TapeTrack Desktop Programs](#) to scan information into TapeTrack.

The window supports various scan input options, including:

- Barcode scanner
- [GazillaByte CloudScan](#) Mobile Devices
- Keyboard
- Windows Clipboard
- File Input via Cut and Paste and Multiple File Selection.



Notes:

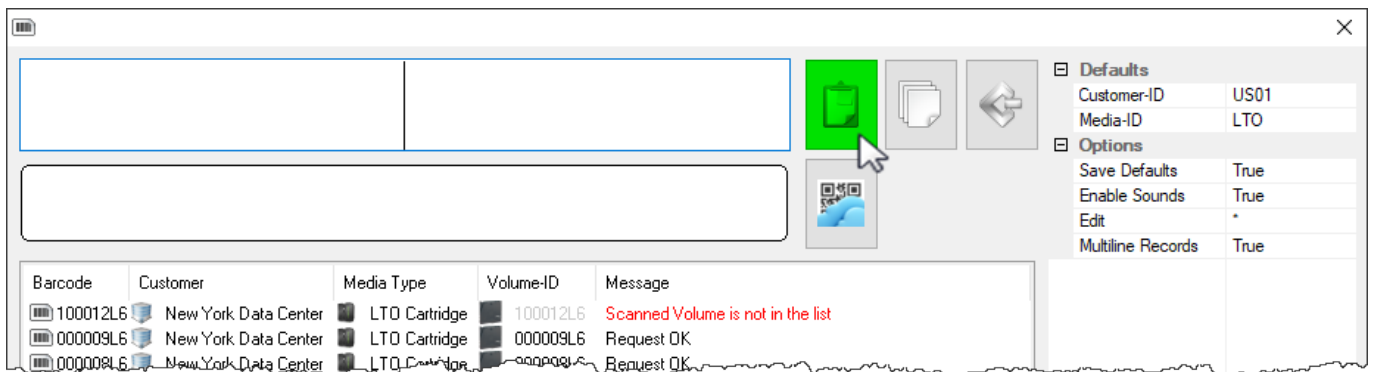
- **A** Alphanumeric display of barcode.
- **B** Scanned, or entered, display of barcode.
- **C** List of scanned, or entered, barcodes.
- **D** Options to enter barcodes including windows Clipboard, File Open, CloudScan and SCSI.
- **E** If Barcode Administration is not set to assume a [Customer-ID](#) or [Media-ID](#) for a given Volume, Defaults can be set to associate Unqualified Barcodes with a specific Customer and Media Type.
- **F** The Barcode Scanning Window Options:
 - **Save Defaults** will keep the current values for the next session.
 - **Enable Sounds** provides audible feedback for scan verification. To disable this set to **False**.
 - **Edit** allows the addition of prefix or suffix values to scanned barcodes. Setting Edit to *L6 would enter a scanned barcode of 123456 as 123456L6.

- **Multiline Records** Set to **True** allows input of multiple volumes on a single line, separated by spaces, tabs or commas. Set to **False** inputs each line as one volume irrespective of format.

Windows Clipboard

Copy the volume-ID/s to the windows clipboard. With the Scan Out Volumes input window open (click the button with the scanner image at the top right of the window to open if required) click the paste button at the top of the window and **volume ID's** will be scanned out.

Click the X in the top right corner when finished scanning volumes.

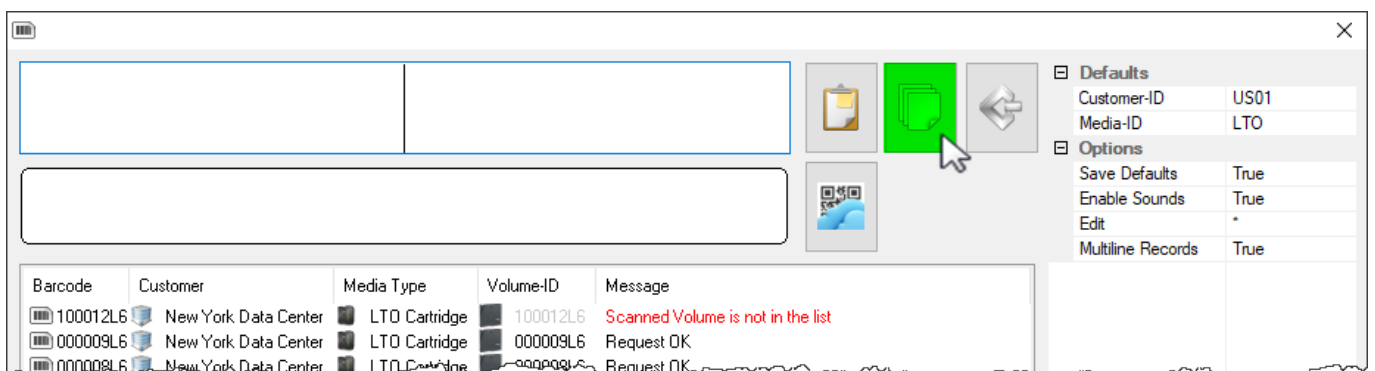


File Input

With the Scan Out Volumes input window open click on the file input button, open the file containing the volumes to be scanned out.

Locate and select the file in the browser and click open. Volumes will be loaded from the file and scanned out.

Click the X in the top right corner when finished scanning volumes.



Keyboard Input

With the Scan Out Volumes input window open and in focus type in the volume/s barcode and press

enter to scan volumes from the Scan-Out list.

Correct volumes scanned out will display in the lower window with an audible beep and a message "Request OK".

Incorrect volumes will display in the lower window with an audible warning "The volume scanned was not in the list" and the message displayed in red. Incorrect volumes scanned will not be entered into TapeTrack.

Click the X in the top right corner when finished scanning volumes.



Setting the Default Customer-ID and Media-ID

There are two ways to set the Customer and or Media Type when in the Scan Windows.

- Manually enter the new **Customer ID** and **Media Type** in the Defaults window.
- Scan a Barcode for the new **Customer** and **Media Type**.

Barcodes starting with a period are used to set the default customer and media.

```
.US01.LT0 will set the Customer-ID to US01, and the Media-ID to LT0.
.US01 will set the Customer-ID to US01.
..LT0 will set the Media-ID to LT0.
```

Editing The Barcode Trough The Scan Window

Adding Suffix To Barcode

To add a suffix to scanned barcodes in the field Edit, under **Options** in the top right of the scan window, add an asterisk and the required suffix.

For example to add L6 to a scanned barcode add ***L6** in the Edit field.

From:

<https://rtfm.tapetrack.com/> - **TapeTrack Documentation**

Permanent link:

https://rtfm.tapetrack.com/desktop/scan_window?rev=1515454398

Last update: **2025/01/21 22:07**

