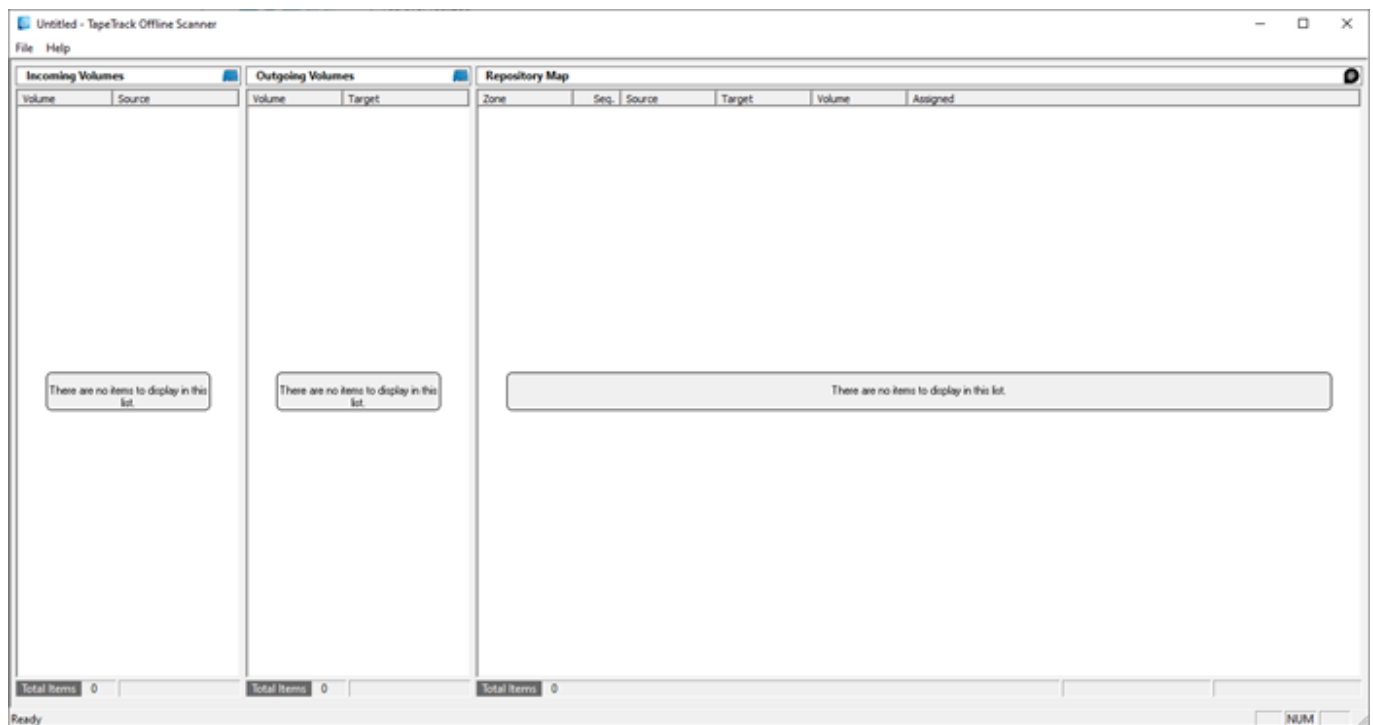


# TMSSOfflineScanner

TMSSOfflineScanner allows the remote allocation of Slots to Volumes via the importation of a file extracted from the Framework Server database using the command line program TMSS10BatchSlotAllocation without the need for a direct database connection.

The updated Slot allocation is then exported to file to be read in by TMSS10BatchSlotAllocation, run in input mode.



## Supported Platforms

- Windows 7 and above.

## Technical Support

TapeTrack Software is commercially supported by a full time help desk staff.

If you are experiencing problems or want some advice on how to configure or use the product, please see the [Accessing Technical Support](#) page.

2017/05/28 21:56 · Gerard Nicol

## TapeTrack Security

TapeTrack Software is created with security always in mind. For further details on how TapeTrack is designed, please see the [TapeTrack Security](#) section.

2017/06/09 17:45 · Gerard Nicol

# Installation

The TapeTrack TMSSOfflineScanner Software installs automatically via an InstallShield installer.

Run setup.exe to start the installation.

## Testing the installation

When the product is installed you will see a shortcut to TapeTrack TMSSOfflineScanner in the Windows Start Menu.

To test that the program has been installed, double-click on the Start Menu shortcut. No updates will be performed by simply starting the program.

## Users Guide

[Getting Started](#)

From:  
<https://rtfm.tapetrack.com/> - **TapeTrack Documentation**

Permanent link:  
<https://rtfm.tapetrack.com/desktop/tmssofflinescanner?rev=1584408953>

Last update: **2025/01/21 22:07**

