

# Extended Attributes

Extended Attributes are additional variables outside of various Object-IDs and descriptions that can be set for a specific [Volume](#). Attributes can be searched by using the Search Attributes function in the right-click menu of a [Customer Node](#) in the [Customer Tree](#).

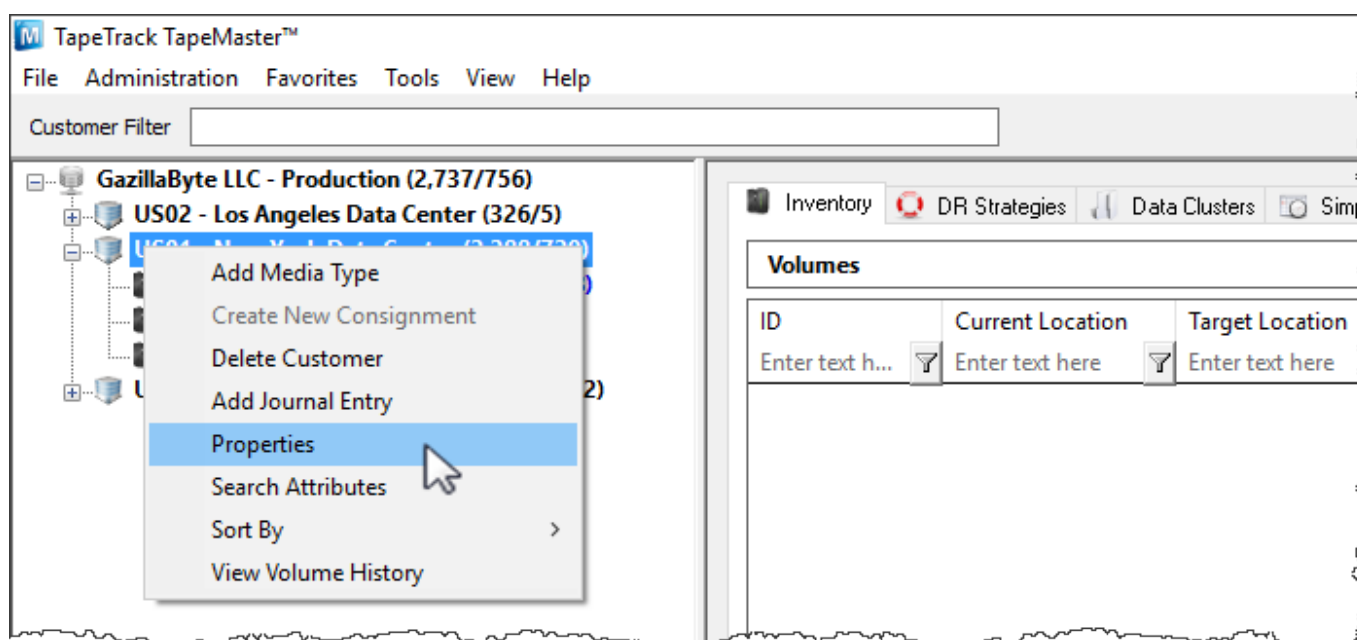
## Adding and Maintaining Attributes

Attributes are divided into three main parts: Attribute, Type, and Value.

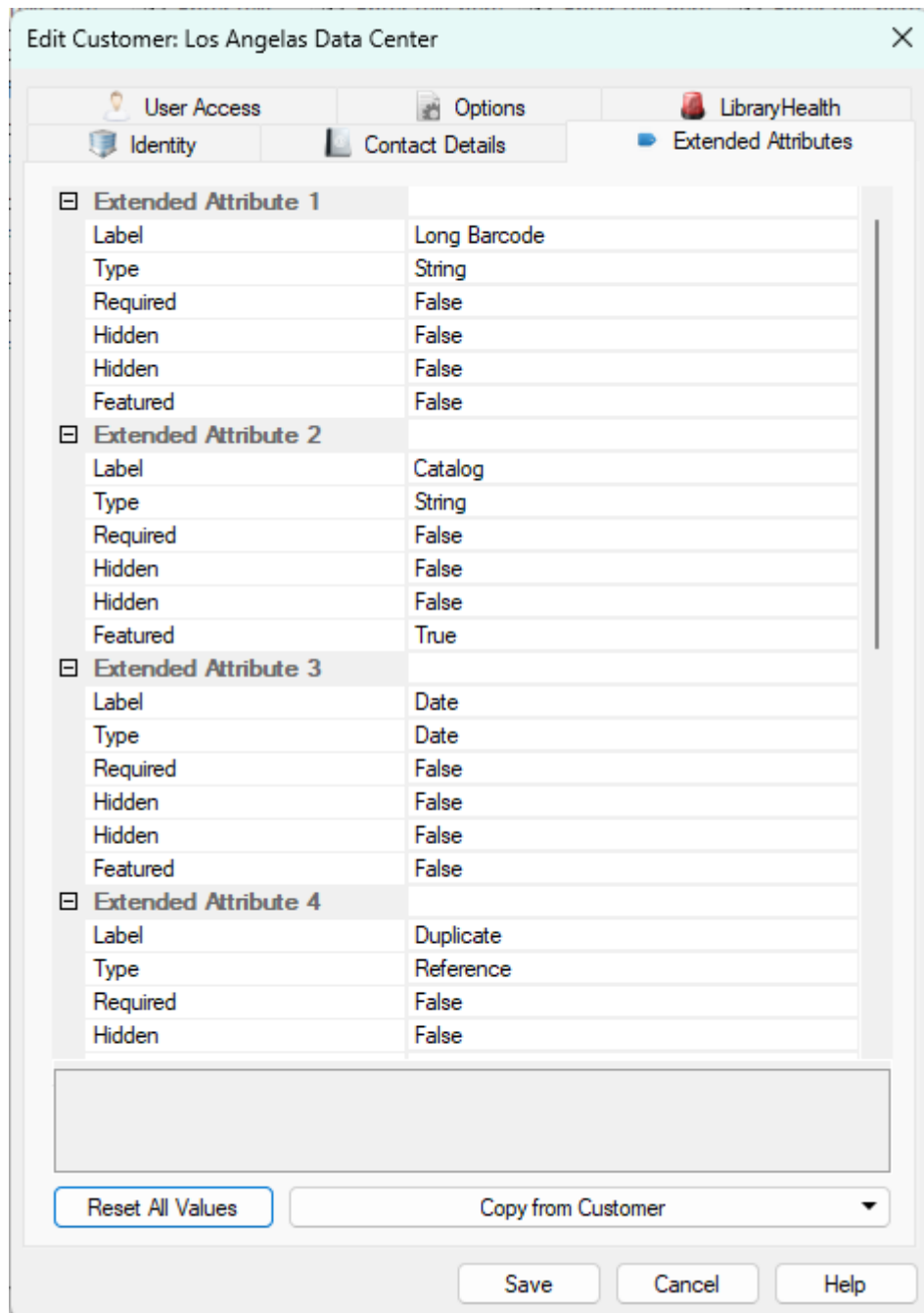
- **Attribute:** An Attribute is an item that can have many variables assigned to it, similar to a category.
- **Type:**
  - Integer
  - Date: Date value
  - String: String value, maximum length 256 characters
  - Reference: Referencing value pointing to other Volumes
  - **\*\*Dynamic List\*\*:** Attribute list containing values listed from current attribute values
  - **List:** Set list of values through Administration > Server Options > Attribute List Values
  - Boolean: True or false
- **Value:** The Values are the unique variables that are assigned to each Attribute on a [Volume](#) level.

## Setting Attributes and Types

Attributes and types are set at a Customer level by right-clicking a Customer in the Customer Tree and selecting **Properties**.



This will launch the Customer Properties Window. Select the Attributes tab.



Left-click in the Attribute field next to an Index number to enter an Attribute.

By default, the type will be set to String. Click String to select either String, Date, Integer, Boolean, List or Reference. from the Type drop-down menu.

[Lists](#) must be created before they will show for selection.

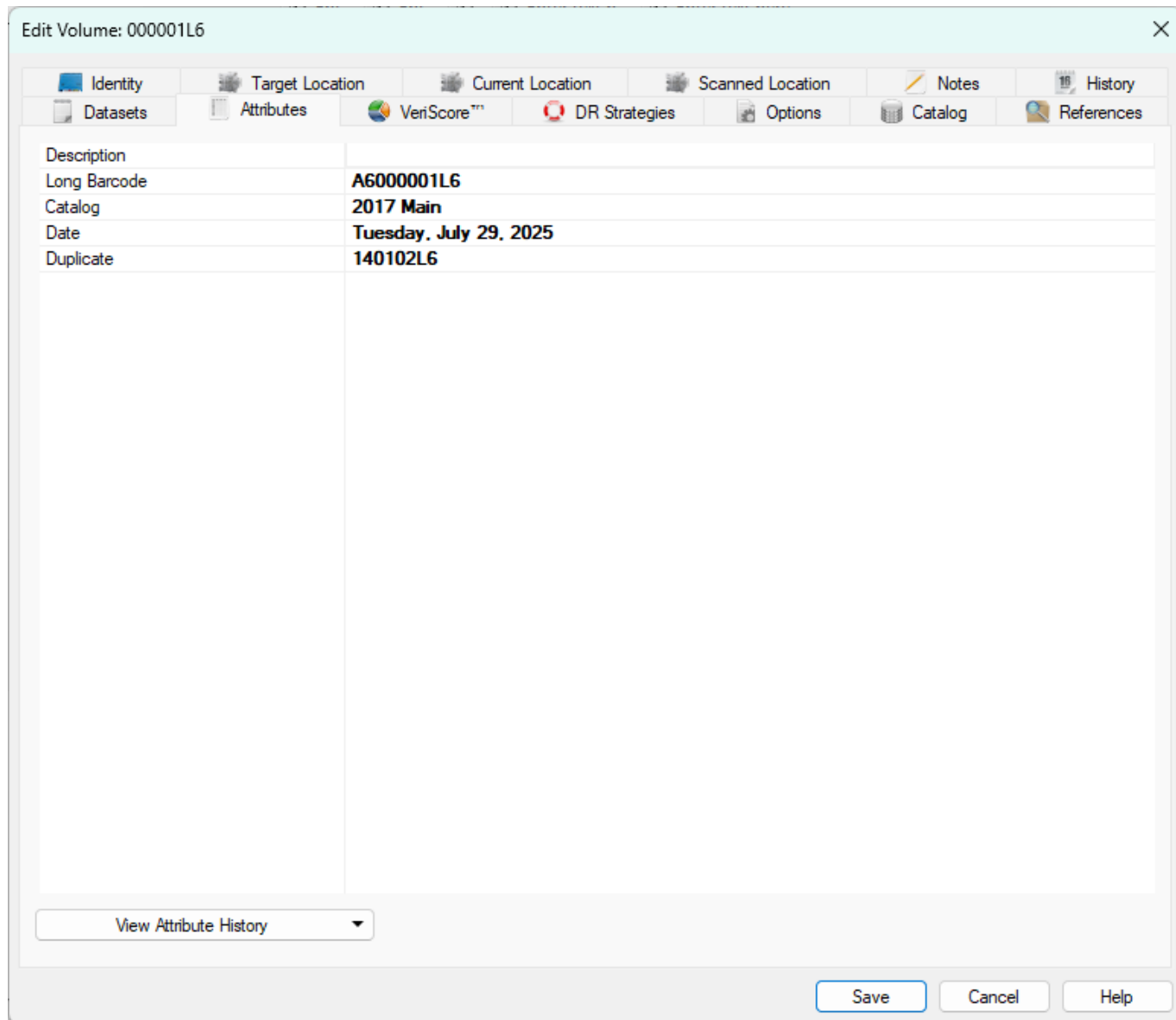
Set **Required** to the required value when creating new volumes:

- False equates to optional value.
- True equates to mandatory entry.

## Setting Attribute Values

Attribute Values are set at a [Volume](#) Level in the Attributes Tab of the [Volume Properties Window](#). To

launch the [Volume Properties Window](#) for a specific [Volume](#), double-click a Volume in the [Volume List](#) or right-click a [Volume](#) in the [Volume List](#) and select **Properties**.



Left-click in the Value field across from the desired Attribute to set a value for that Attribute.

### Attribute History

Changes to Attributes are kept in a historical log. To access the historical values of an Attribute for a particular volume double-click the selected volume or right-click and select properties. Open the Attributes tab and select the drop-down box Available Attribute History and click on the required Attribute category.

| Attribute    | Value                  |
|--------------|------------------------|
| Description  |                        |
| Long Barcode | A6000001L6             |
| Catalog      | 2017 Main -1A          |
| Date         | Tuesday, July 29, 2025 |
| Duplicate    | 140102L6               |

View Attribute History ▾ **Catalog (2 history records)** Save Cancel Help

This will open the **Attribute History**, displaying the previous values the Attribute has been set to, the date it was changed and the user who updated it.

| Date Changed        | User-ID    | Old Value     | Deleted       |
|---------------------|------------|---------------|---------------|
| 2025-07-29 09:41:21 | tapemaster | 2017 Main     | No            |
| 2025-07-29 09:41:34 | tapemaster | 2017 Main -1  | No            |
|                     | tapemaster | 2017 Main -1A | Current Value |

Total Items 3

OK

## Searching Attributes

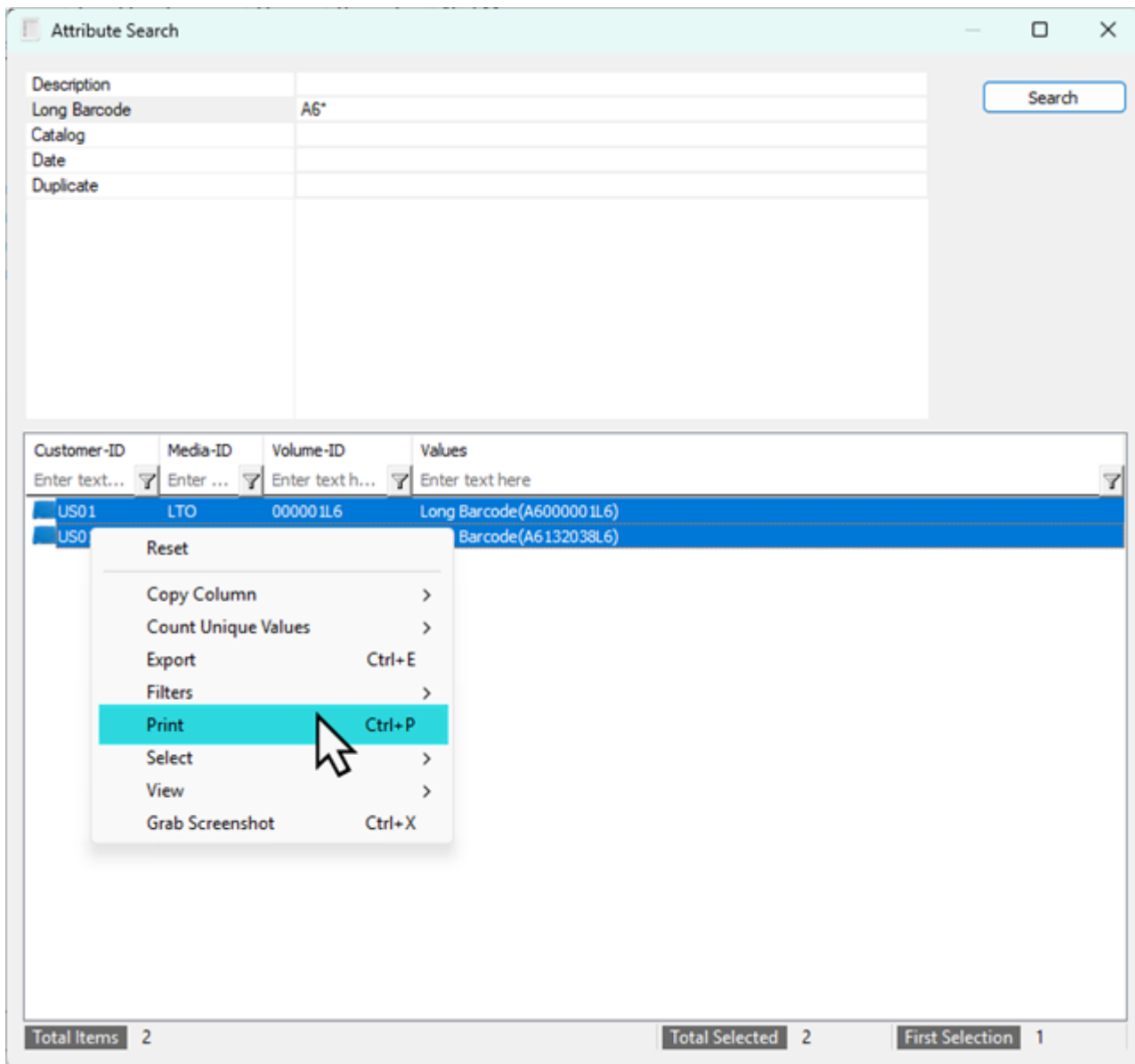
The Search Attributes function can be launched by right-clicking a [Customer](#) in the [Customer Tree](#) and selecting **Search Attributes**.



This will launch the Attribute Search window. The Attribute Search window is divided into two windows: the filter window and the Item List.

The filters window displays the Attributes set at a **Customer** level. Left-click next to an Attribute and type in an Attribute Value to search for all Volumes that have that Attribute Value set.

Right-clicking in the Item List window will provide options to print a list of the **Volumes** with the selected Attribute Value set.



## See Also

[Volume List Properties](#)

From: <https://rtfm.tapetrack.com/> - **TapeTrack Documentation**

Permanent link: [https://rtfm.tapetrack.com/element/volume\\_attributes?rev=1759195448](https://rtfm.tapetrack.com/element/volume_attributes?rev=1759195448)

Last update: **2025/09/30 01:24**

