

Dynamic Attribute Lists

Dynamic Attribute Lists provide a flexible selection mechanism by automatically populating available options based on the Volumes previously entered values.

This approach maintains consistency across Attribute Values by encouraging reuse of existing entries—minimizing spelling variations (e.g. Removed vs removed) and streamlining data entry.

Unlike fixed lists, dynamic lists also support the addition of new values as needed, ensuring adaptability while preserving uniformity and reducing repetitive typing.

Creating A Dynamic Attribute

Right click on the required Customer-ID and select **Properties**

Expand the first available Extended Attribute, fill in the required fields:

- Label: Identifiable description eg Pool
- Type: Dynamic
- Featured: True displays the attribute in the [Custoer Tree Attribute View](#)

Extended Attribute 1	
Label	Pool
Type	Dynamic List
Required	False
Hidden	False
Hidden	False
Featured	False

Extended Attribute 2
Extended Attribute 3
Extended Attribute 4
Extended Attribute 5
Extended Attribute 6
Extended Attribute 7
Extended Attribute 8
Extended Attribute 9
Extended Attribute 10
Extended Attribute 11
Extended Attribute 12

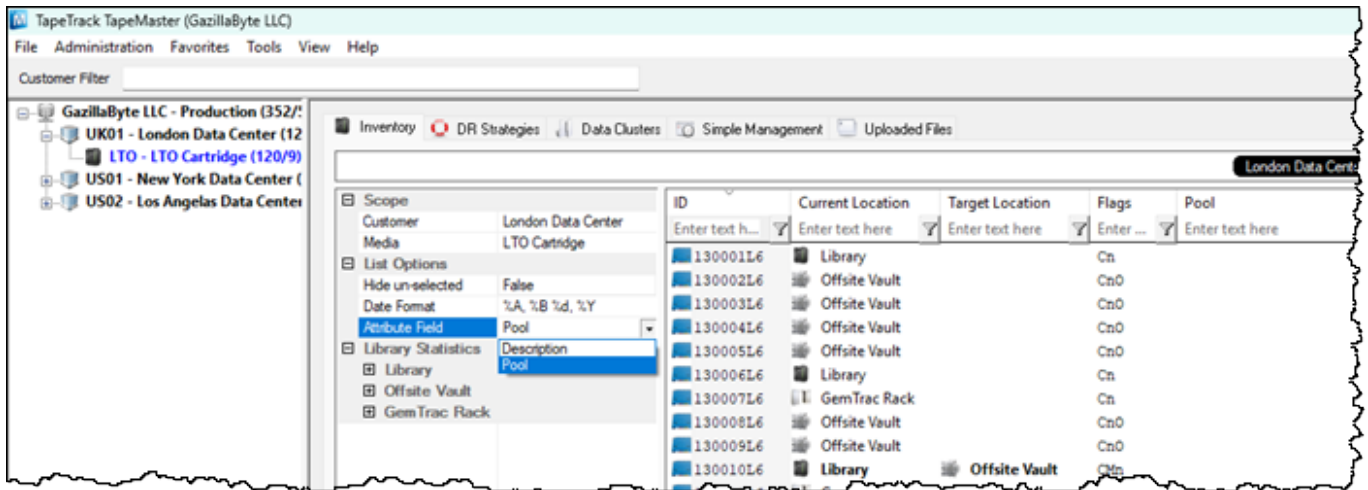
Reset All Values Copy from Customer

Save Cancel Help

Click Save to add the new attribute.

Display Dynamic Attribute

Click in the Customer Tree window and press F5 on your keyboard to refresh the data. Via the [Volume List Properties](#) window, select the Attribute via the Attribute Field dropdown to display it in place of the Description field in the Inventory window.



attribute

From: <https://rtfm.tapetrack.com/> - **TapeTrack Documentation**

Permanent link: https://rtfm.tapetrack.com/element/volume_attributes_dynamic?rev=1759201887

Last update: **2025/09/30 03:11**

