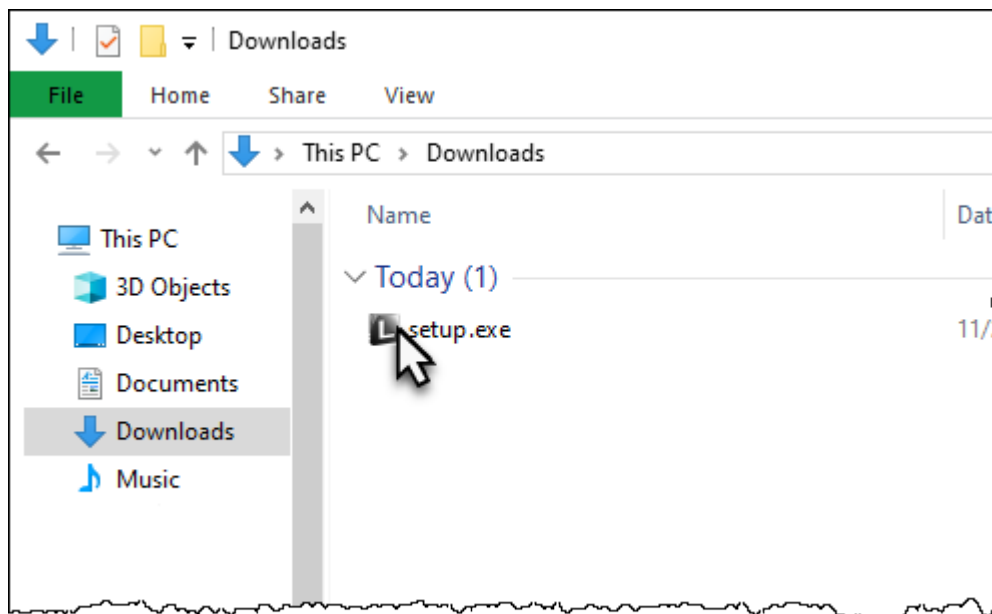
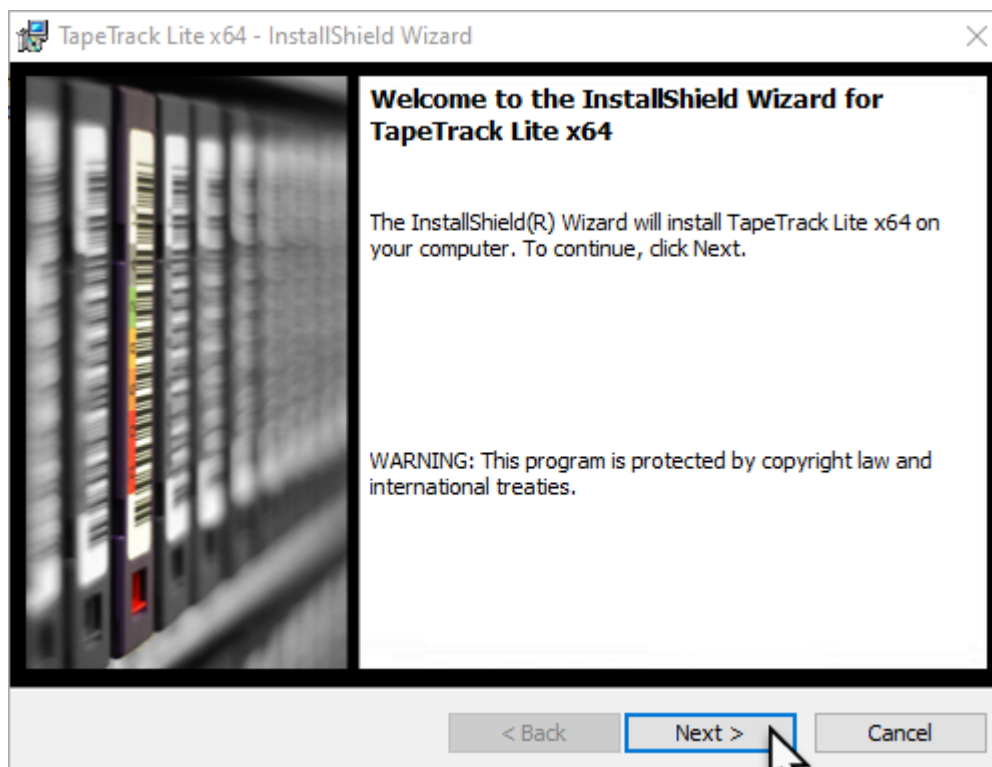


The TapeTrack Lite Software installs automatically via an InstallShield installer.

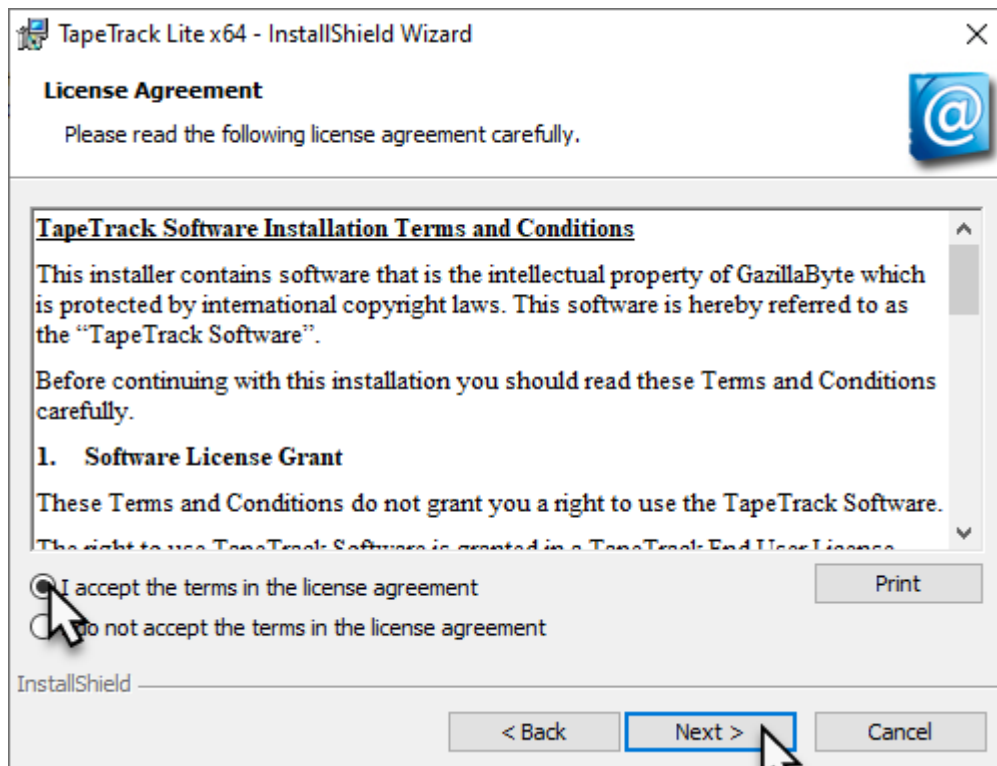
Locate the executable you downloaded, setup.exe, and double click to initiate the installation.



Click Next > to start the Install Shield Wizard.



After reading and agreeing to the License Agreement click I accept the terms in the license agreement and Next > to proceed



From:  
<https://rtfm.tapetrack.com/> - **TapeTrack Documentation**

Permanent link:  
[https://rtfm.tapetrack.com/include/install\\_lite?rev=1636595528](https://rtfm.tapetrack.com/include/install_lite?rev=1636595528)

Last update: **2025/01/21 22:07**

