

Adding New Volumes

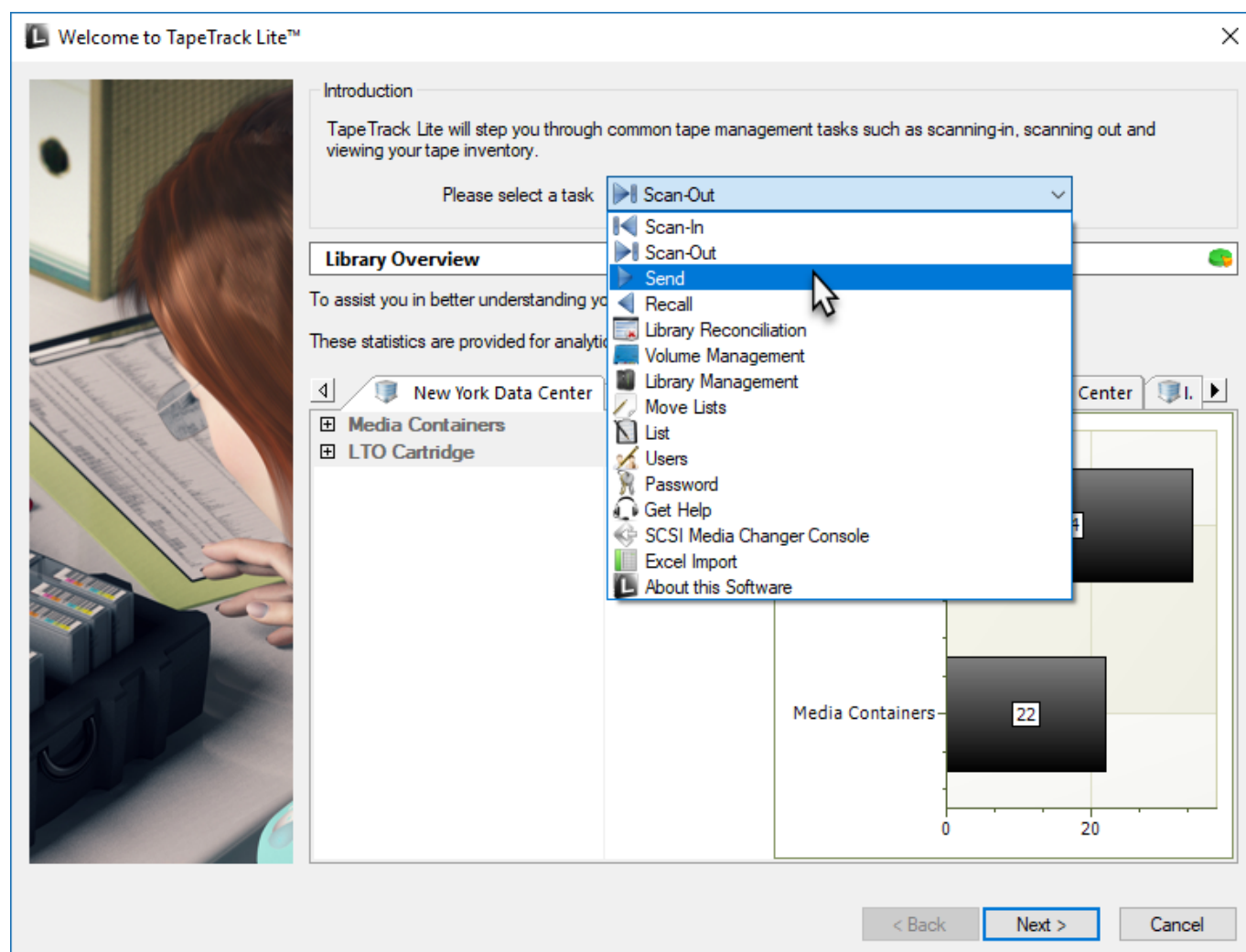
Adding new [Volumes](#) to Tapetrack can be accomplished using one of two methods.

Adding New Volumes Using Volume Management

Adding New Volumes Using Send

Using Send to add new [Volumes](#) is only recommended when the new [Volumes](#) are part of a consignment being sent already. If just adding new [Volumes](#) to the inventory using Volume Management is the correct process to use.

Select Send from the **Task Menu** and click Next to continue.



From:

<https://rtfm.tapetrack.com/> - **TapeTrack Documentation**

Permanent link:

https://rtfm.tapetrack.com/lite/add_volumes?rev=1550449632

Last update: **2025/01/21 22:07**

