

# Adding New Volumes

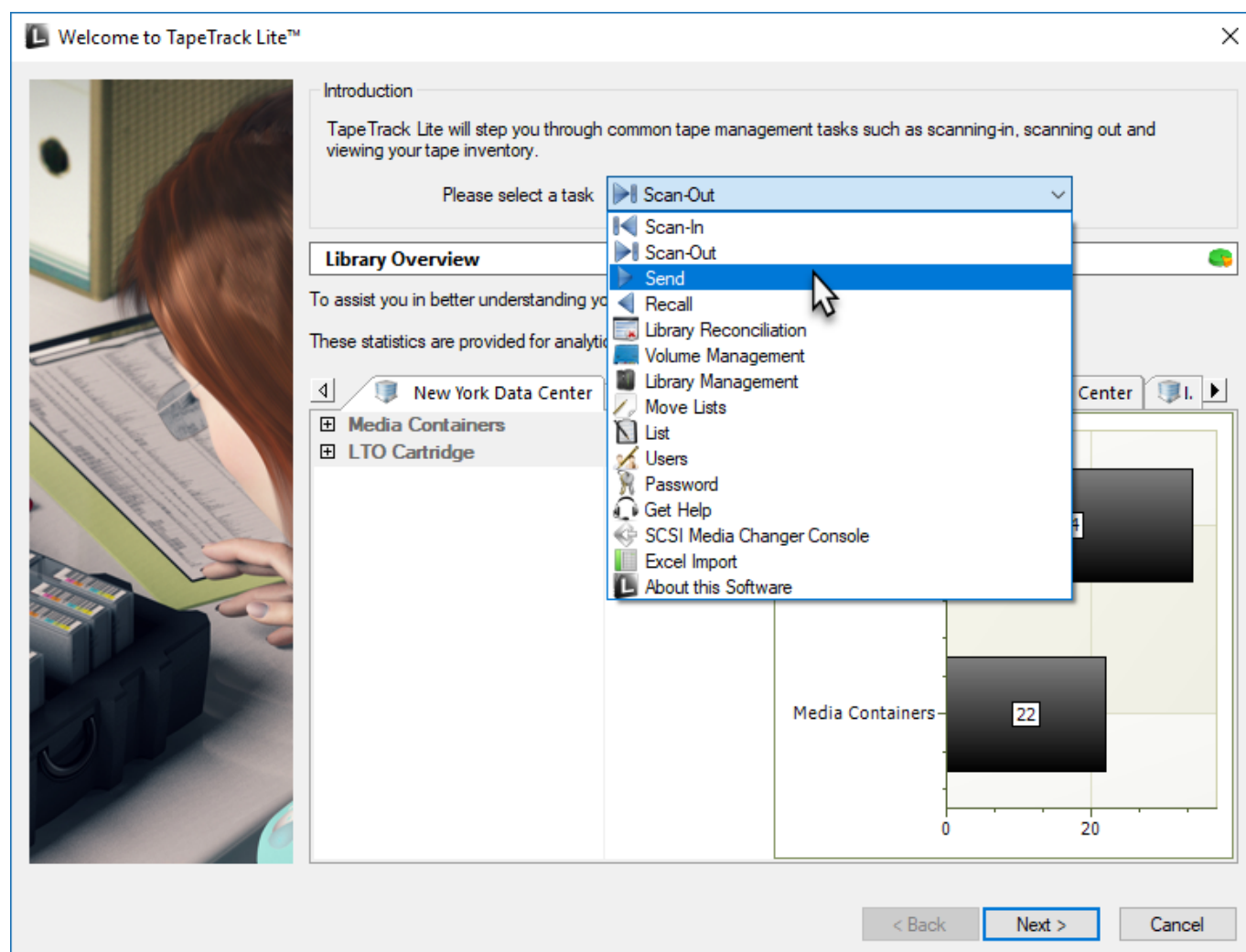
Adding new [Volumes](#) to Tapetrack can be accomplished using one of two methods.

## Adding New Volumes Using Volume Management

## Adding New Volumes Using Send

Using Send to add new [Volumes](#) is only recommended when the new [Volumes](#) are part of a consignment being sent already. If just adding new [Volumes](#) to the inventory using Volume Management is the correct process to use.

Select Send from the **Task Menu** and click Next to continue.



## Options

**TapeTrack Lite™ - Options**

**Instructions**

The Options screen allows you to specify options that will influence how future screens perform.

The options you change will be retained for future sessions.

**General Options**

Log File Folder: C:\Program Files\TapeTrack\TapeTrack Lite\docs\Lite Log Files

**Advanced Options**

Time Threshold: 3 days, 00 hs, 00 ms

Next move: Tuesday, May 24, 2022 (1131 days)

Predefined Lists: <Not Selected>

< Back   Next >   Cancel

### Notes:

- **A** If required you can set the location for the log files to be written to, or leave the default. To change the default directory, click in the field to the right of the Log File Folder, click on the more options button (...) and select the preferred directory.
- **B** Under Advanced Options:
  - Set the time deadline before a **Volume** will be marked as overdue at its Target Repository.
  - The date for the **Volumes** next move.
  - List of pre-defined **Volumes** .  
To add additional lists, create new files in the install directory that match the pattern List-\*.txt.

List-Sample.txt - Notepad

File Edit Format View Help

```
#Sample send list. To skip delete file List-Sample.txt
US01.LTO.000000
US01.DL.000001
```

From:

<https://rtfm.tapetrack.com/> - **TapeTrack Documentation**

Permanent link:

[https://rtfm.tapetrack.com/lite/add\\_volumes?rev=1550449768](https://rtfm.tapetrack.com/lite/add_volumes?rev=1550449768)

Last update: **2025/01/21 22:07**

