

Adding New Volumes

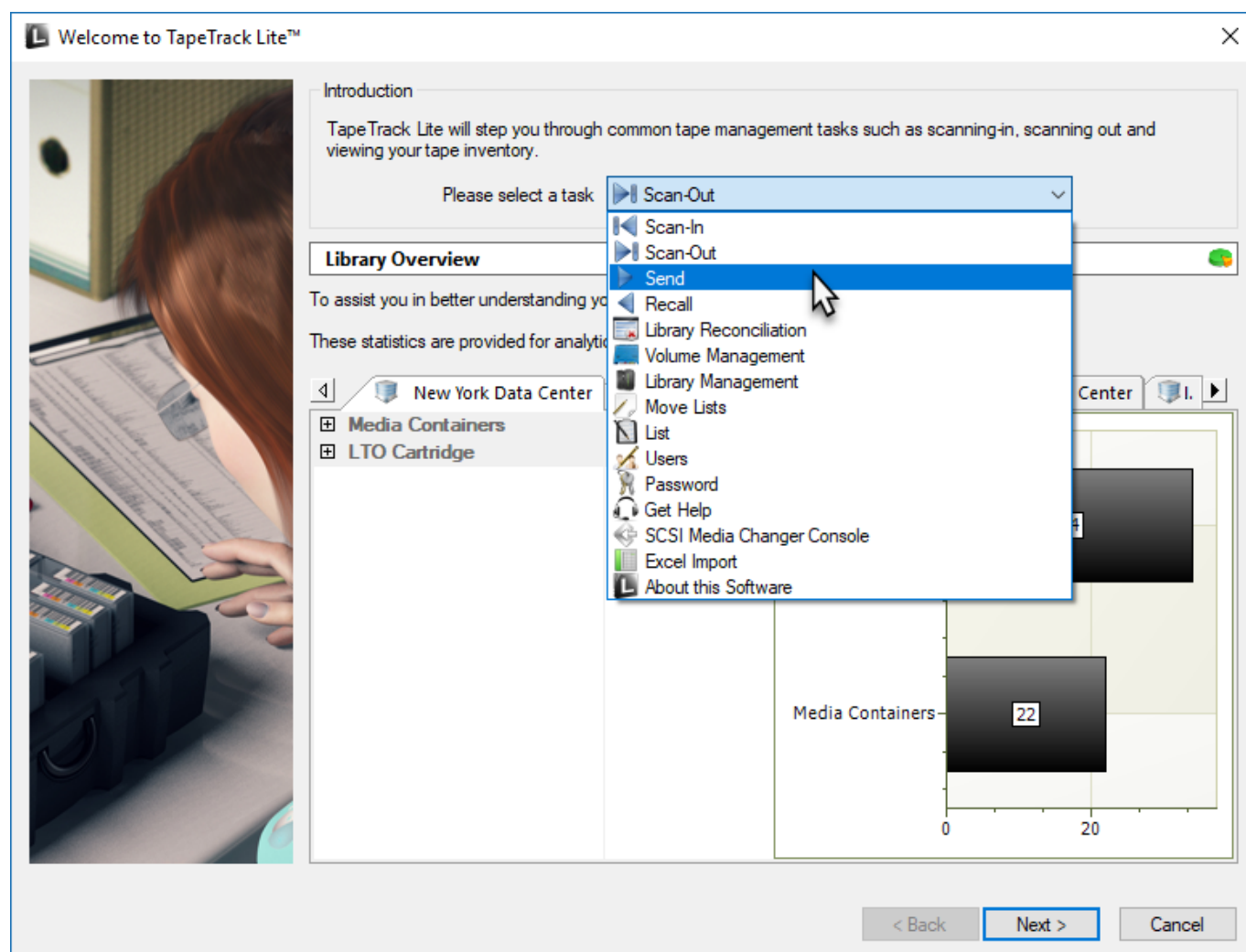
Adding new [Volumes](#) to Tapetrack can be accomplished using one of two methods.

Adding New Volumes Using Volume Management

Adding New Volumes Using Send

Using Send to add new [Volumes](#) is only recommended when the new [Volumes](#) are part of a consignment being sent already. If just adding new [Volumes](#) to the inventory using Volume Management is the correct process to use.

Select Send from the **Task Menu** and click Next to continue.



Options

TapeTrack Lite™ - Options

Instructions

The Options screen allows you to specify options that will influence how future screens perform.

The options you change will be retained for future sessions.

General Options

Log File Folder: C:\Program Files\TapeTrack\TapeTrack Lite\docs\Lite Log Files

Advanced Options

Time Threshold: 3 days, 00 hs, 00 ms

Next move: Tuesday, May 24, 2022 (1131 days)

Predefined Lists: <Not Selected>

< Back Next > Cancel

Notes:

- **A** If required you can set the location for the log files to be written to, or leave the default. To change the default directory, click in the field to the right of the Log File Folder, click on the more options button (...) and select the preferred directory.
- **B** Under Advanced Options:
 - Set the time deadline before a **Volume** will be marked as overdue at its Target Repository.
 - The date for the **Volumes** next move.
 - List of pre-defined **Volumes** .
To add additional lists, create new files in the install directory that match the pattern List-*.txt.

List-Sample.txt - Notepad

File Edit Format View Help

```
#Sample send list. To skip delete file List-Sample.txt
US01.LTO.000000
US01.DL.000001
```

Scanning to add Volumes

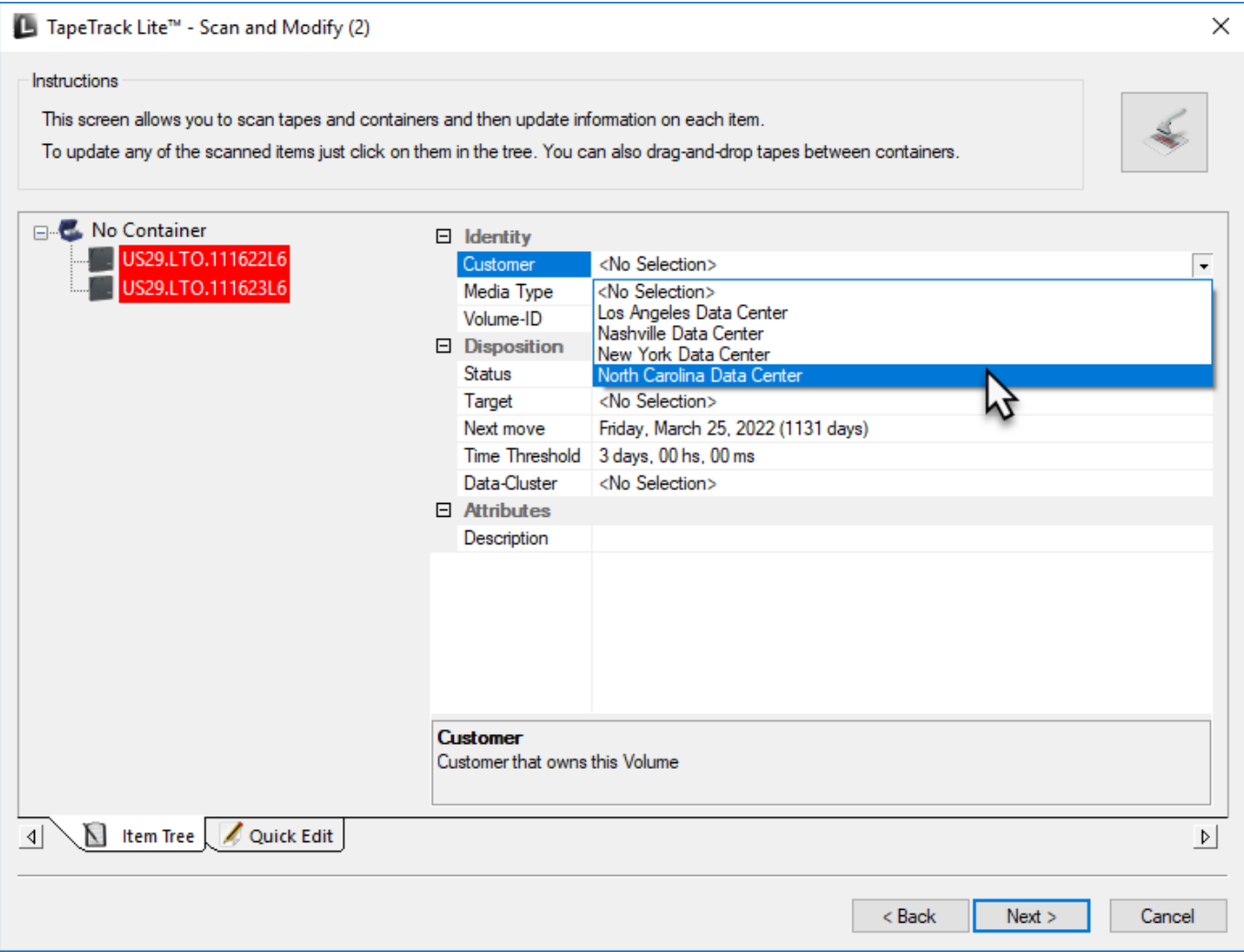
This opens the **Scan and Modify** window which, by default, opens the **Scan To Add Volumes** window.

Scan out the required **Volumes** using your preferred **scanning method**.

When all **Volumes** are scanned in, close the **Scan To Add Volumes** window by clicking X at top right of window.

Setting New Volume ID's

Select new **Volume** by clicking on it to display the attributes in the right of the window



Select, in order, the correct Customer ID, Media ID from the **identity** section.

From the **Disposition** section, set the Target Repository to the required value.

[[lite:lite_send_add_new_volume_repository.png]]

From:

<https://rtfm.tapetrack.com/> - **TapeTrack Documentation**

Permanent link:

https://rtfm.tapetrack.com/lite/add_volumes?rev=1550450667

Last update: **2025/01/21 22:07**

