

Lite Configuration File

The TMSLite.cfg file allows TapeTrack administrators to customize the end-user experience for Lite users. You can insert, remove, and change the names of the tasks in the **Tape Management Task Menu**, limit functions of a [Repository](#), and manage how log files are created and archived.

Any modifications made in the config file have only local effects not global. If you have multiple installations of Lite any modifications will need to be done on each computer.

```
//
// Sample TapeTrack Lite Configuration File
//
options=
{
  menu=
  (
    {
      filter="*Guide*";
      hidden=true;
    },
    {
      filter="*Users*";
      hidden=true;
    },
    {
      filter="*Upload*";
      hidden=true;
    },
    {
      filter="*Outlook*";
      hidden=true;
      // text="Alternate iCalendar text";
    },
    {
      hidden=true;
      text="Custom Command 1";
      //sequence=100;
      command="echo hello > out.txt";
      filters=( "*this string will be excluded*", "*So will this
string*" );
    }
  );

  // file truncated for display purposes
```

Locating The Lite Config File

The default installation location of TapeTrack Lite is at C:\Program Files\TapeTrack\TapeTrack Lite. This location can be modified at installation to suit your requirements if required.

The Lite config file (TMSSLite.cfg) is located in the TapeTrack directory at \TapeTrack\TapeTrack Lite\TMSSLite.cfg

Customizing the Library Management Tasks Menu

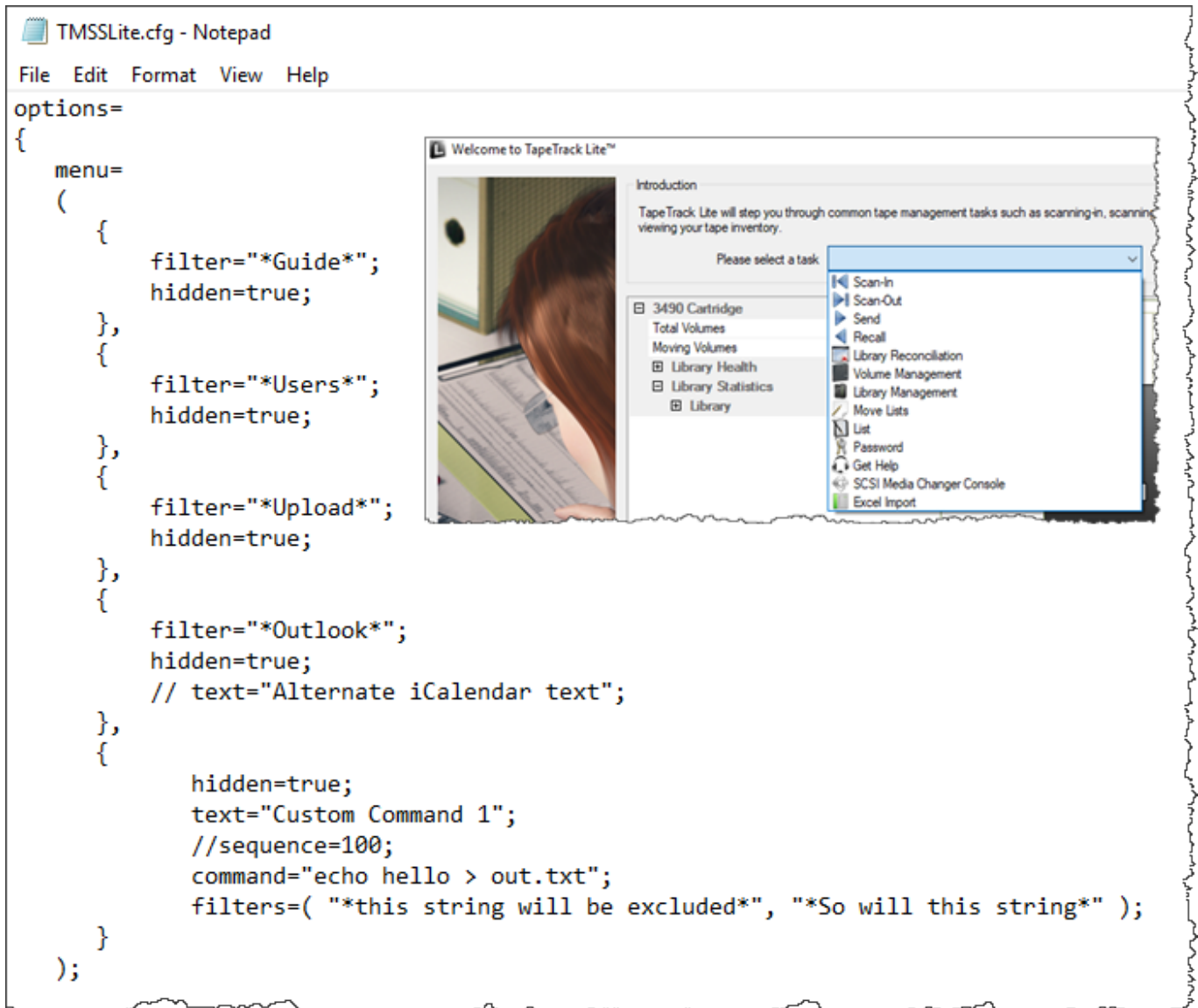
The menu = command in the TMSSLite.cfg file can be used to customize the Tape Management Task Menu.

Tasks can be added, hidden, reordered, and renamed to address the specific needs of an organization or individual.



Modification of the configuration files alters settings for the local installation of TapeTrack Desktop software.

Being a local modification, means it only affects the local installation so will need to be executed on all local machines you want to alter the display on.



The image shows a Notepad window titled "TMSSLite.cfg - Notepad" with a menu bar (File, Edit, Format, View, Help). The configuration file content is as follows:

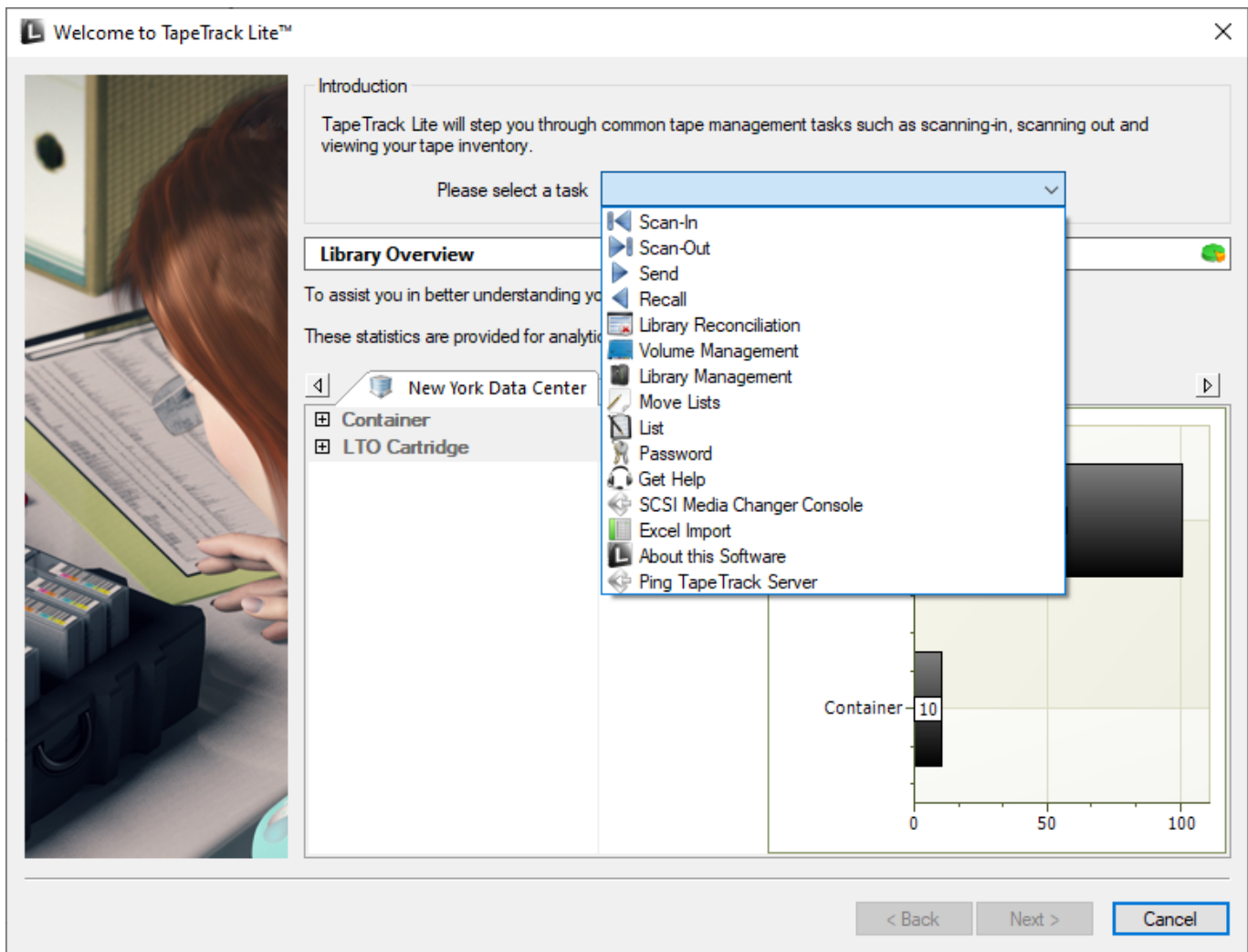
```
options=
{
  menu=
  (
    {
      filter="*Guide*";
      hidden=true;
    },
    {
      filter="*Users*";
      hidden=true;
    },
    {
      filter="*Upload*";
      hidden=true;
    },
    {
      filter="*Outlook*";
      hidden=true;
      // text="Alternate iCalendar text";
    },
    {
      hidden=true;
      text="Custom Command 1";
      //sequence=100;
      command="echo hello > out.txt";
      filters=( "*this string will be excluded*", "*So will this string*" );
    }
  );
};
```

Overlaid on the right side of the Notepad window is a screenshot of the "Welcome to TapeTrack Lite" application. The application window has a title bar "Welcome to TapeTrack Lite™" and an "Introduction" section. Below the introduction, there is a "Please select a task" dropdown menu. The dropdown menu is open, showing a list of tasks: Scan-In, Scan-Out, Send, Recall, Library Reconciliation, Volume Management, Library Management, Move Lists, List, Password, Get Help, SCSI Media Changer Console, and Excel Import. The "List" task is currently selected.

There are several commands that can be used under the menu command:

- **//** - a double forward slash indicates a comment. Because of this, anything following a double slash will not be included in the script and will not modify [Lite](#).
- **filter** - filter is used to isolate the pre-existing command that you would like to alter. TapeTrack Filters can be used in this section. For example, the above script uses " filter="*Outlook*"; " to isolate any variable in the Tape Management Task Menu that has the String "Outlook" in it. Due to the fact that "Outlook Integration" is the only Tape Management Task Menu item that has "Outlook" in it, it is the only menu item that will be isolated and changed.
- **hidden** - hidden can either be true or false and will dictate whether or not a Tape Management Task Menu appears in the menu.
- **text** - text indicates what will be displayed in the Tape Management Task Menu in TapeTrack Lite.
- **sequence** - sequence indicates where in the Tape Management Task Menu the task be displayed. The native sequence numbers are in tens. For example:

Default Menu View



In this example, [Scan-In](#) would be the first option. It thus has a sequence number of 10. Likewise, [List](#) is the sixth option and thus has a sequence number of 60. To put a custom command between [Recall](#) and [Manage](#), you could use the number "45" in the `TMSSLite.cfg` file to indicate that it is between the 4th and 5th option.

- **command** - command can be used to add a command line function to the Tape Management Task Menu. The most popular of these is [TMSS10Ping](#).

Example

The following script was used to alter the displayed Tape Management Task Menu:

```
menu=
(
{
  filter="*Guide*";
  hidden=true;
},
{
  filter="*Users*";
  hidden=true;
},
{
  filter="*Upload*";
```

```

        hidden=true;
    },
    {
        filter="*Outlook*";
        hidden=true;
        // text="Alternate iCalendar text";
    },
    {
        hidden=true;
        text="Custom Command 1";
        //sequence=100;
        command="echo hello > out.txt";
        filters=( "*this String will be excluded*", "*So will this
String*" );
    },
    {
        filter="*Send*";
        hidden=false;
        text="Transmit to Offsite Vault";
        sequence=01;
    },
    {
        filter="*Recall*";
        hidden=false;
        text="Return from Offsite Vault";
        sequence=02;
    },
    {
        hidden=false;
        text="Ping TapeTrack Server";
        command="TMSS10Ping localhost";
        sequence=100;
    }
};

//
// If you specify a valid logfile value the logfile dialog will not be
displayed
//

logfile="%HOMEDRIVE%HOMEPATH\\Documents";

```

The above script provides the necessary components to:

- Hide any command with the String Guide, Users, Upload or Outlook.
- Change the displayed name of the **Send** function to **Transmit to Offsite Vault**.
- Place the **Send** function at the top of the drop-down list.
- Change the name of the **Recall** function to **Return from Offsite Vault**.
- Place the **Recall** function second in the drop-down list.

- Add a command to the Tape Management Task Menu that runs [TMSS10Ping](#) for the local TapeTrack Server with the text **Ping TapeTrack Server**. Replace the server address localhost with your TapeTrack Framework Server address (dotted IP or DNS) to run the command against your server.
- Place that command at a low location in the Tape Management Task Menu.
- Change the Save Location for Log Files.

Note: the sequence numbers 01 and 02 were used to indicate that they came before the default first sequence number of "10" that is typically assigned to **Scan-In**.

Modified Menu View



Log Files

Log files create a .txt read -file of all of the actions that are performed during a session. Using the TMSSLite.cfg file, you can change the location of where these files are saved. The default save location is " %HOMEDRIVE%HOMEPATH\Documents ";

To change where the log file is saved uncommented (remove // at the start of line) and set directory path where you want the file written to. The directory specified must exist before running TapeTrack Lite.

```
logfile="C:\Users\GazillaByte\Documents\TapeTrack Log Files";
```

Once the log file directory is specified in the configuration file, the log file location screen will no longer be displayed when selecting tasks in TapeTrack Lite.

Repository Filter

Changing the **localrepositoryfilter** variable will limit Lite users to only see a specific [Repository](#) within their [Customers](#).

For example, if you added the script:

```
localrepositoryfilter="*LIBR*";
```

TapeTrack Lite will only display [Repository-ID's](#) containing the String **LIBR**.

Route Log Files to a Syslogd Service

If you have a syslogd service setup, you can configure the TMSSLite.cfg file to have [Lite](#) send log files to your syslogd Server using the **syslogd =** command.

The TMSSLite.cfg sample file has the following example:

```
syslogd = { facility="local1"; server="192.168.10.1"; port=514; };
```

Disable Speech

You can stop TapeTrack Lite verbalizing scanning errors by uncommenting (remove // at the start of line) the line

Change code

```
//  
// If you're a little put off by a computer telling you about your  
mistakes you can set disablespeech to true.  
//  
// disablespeech=true;
```

to

```
//  
// If you're a little put off by a computer telling you about your  
mistakes you can set disablespeech to true.  
//  
disablespeech=true;
```

Variables

Servers

Allocation

Routing

Barcodes

Notifications

From:

<https://rtfm.tapetrack.com/> - **TapeTrack Documentation**

Permanent link:

https://rtfm.tapetrack.com/lite/config_file?rev=1630545652

Last update: **2025/01/21 22:07**

