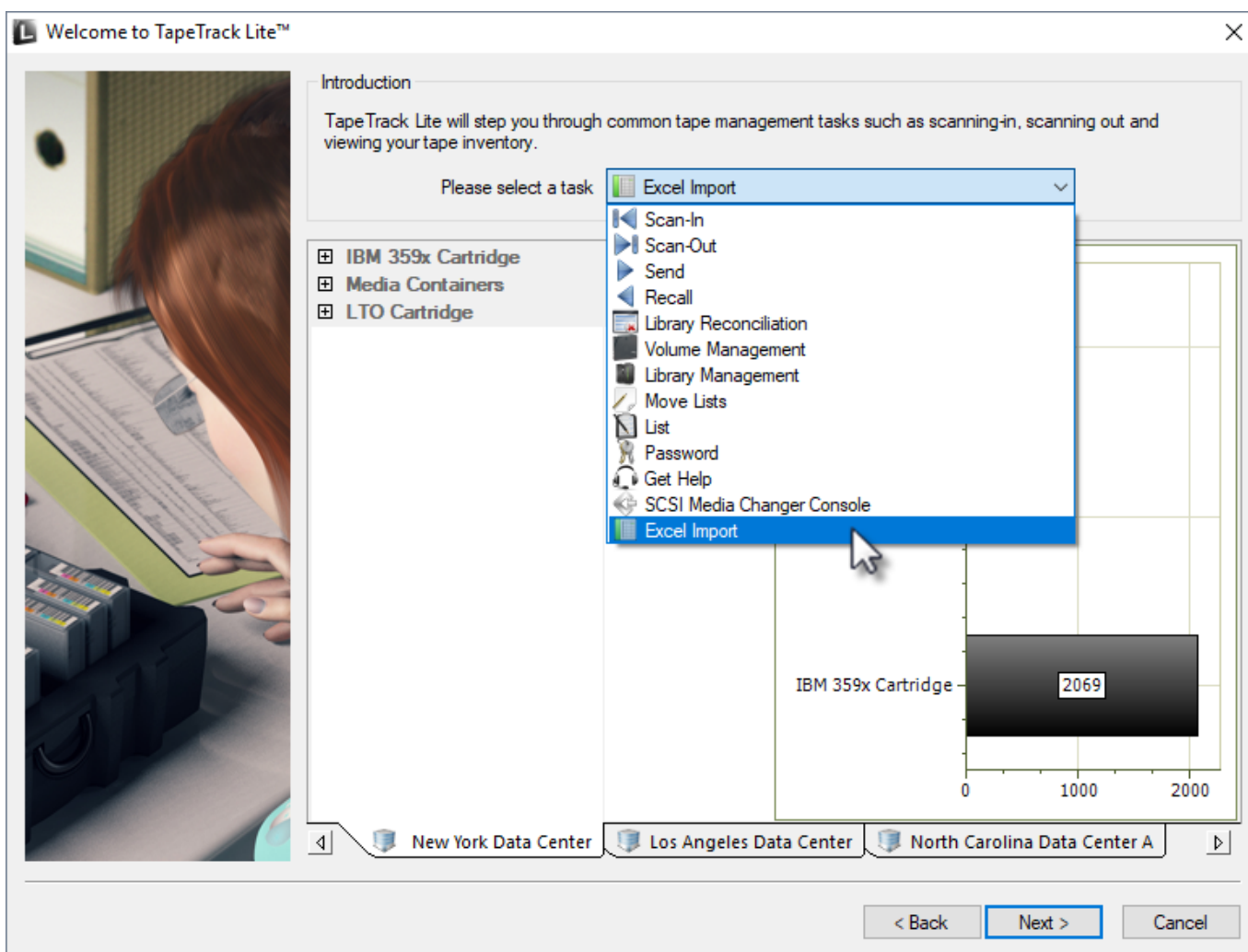


# Excel Import

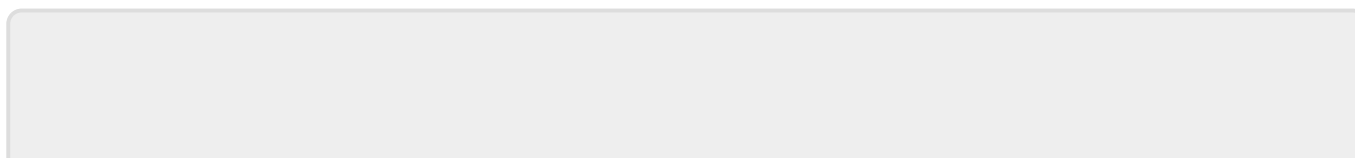
The Excel import task allows you to import volume data from an excel xls file by mapping the Excel values to TapeTrack attributes.

## Importing

Once logged into TapeTrack Lite, select Excel Import from the Library Management Task's drop-down menu.



Once this has closed itself you may continue on with the next phase or close the import window if finished. Closing the import windows will return you to the start menu of TapeTrack Lite.



From:

<https://rtfm.tapetrack.com/> - **TapeTrack Documentation**

Permanent link:

[https://rtfm.tapetrack.com/lite/function\\_excel\\_import?rev=1510250573](https://rtfm.tapetrack.com/lite/function_excel_import?rev=1510250573)

Last update: **2025/01/21 22:07**

